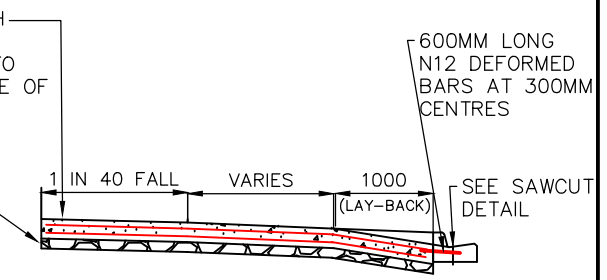
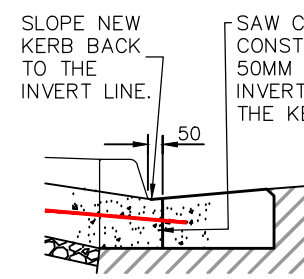


200MM THICK CONCRETE WITH TWO SHEETS OF SL82 MESH REINFORCEMENT. CONCRETE TO HAVE A 70MM SLUMP AND BE OF STRENGTH 25 MPa. (REFER TO NOTE 2).

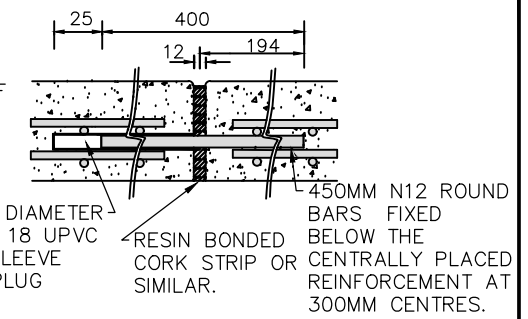
COMPACTED 100MM THICK 20MM SIZE CLASS 3 CRUSHED ROCK ON TOP OF APPROVED SUBGRADE.



BARRIER & SEMI-MOUNTABLE KERB PROFILE
SECTION A-A



SAWCUT DETAIL



EXPANSION JOINT DETAIL

TABLE 1: MINIMUM CLEARANCES

TABLE 1: MINIMUM CLEARANCES	
BETWEEN CROSSOVERS	6 METRES AT KERB
DRAINAGE PITS	0.75METRES (IF WITHIN 0.75M OF PIT EDGE)--INSTALL FIBREGLASS PIT LID) (IF PIT IN CROSSOVER - MODIFY PIT & LID)
TRAFFIC MANAGEMENT DEVICES	1 METRE
UTILITY SERVICE ASSETS	1 METRE
STREET LIGHT	1 METRES
INTERSECTIONS	6.0m FROM TANGENT POINT
PRAM CROSSINGS	2 METRES
TREES	2.5m (DEPENDANT ON SIZE OF TREE)
FIRE HYDRANT	1 METRES
BACK OF KERB LEGAL POINT OF DISCHARGE	1 METRE

NOTES:

- PLEASE ENSURE APPROVAL IS OBTAINED FROM ANY RELEVANT SERVICE AUTHORITIES (EG TELSTRA, WATER AUTHORITY, SEWER AUTHORITY ETC).
- REINFORCEMENT MESH TO BE CENTRALLY PLACED THROUGHOUT CROSSING. MINIMUM 50MM COVER AT ALL TIMES, APPROVED BAR CHAIRS MUST BE USED FOR PROPER PLACEMENT OF REINFORCEMENT. JOINTS TO OVERLAP ONE FULL PATTERN AS PER AS3600 AND AS2870.1
- WHEN A LAYBACK IS POURED SEPARATELY, THEN 600MM N12 BARS ARE TO BE USED TO JOIN LAYBACK TO CROSSOVER.
- PATH AND CROSSING TO BE JOINTED AS SHOWN. WEAKENED PLANE JOINT SPACING TO MATCH EXISTING, OR EQUAL WIDTH OF PATH WHERE PRESENT.
- PATH COMPONENT OF CROSSOVER TO BE 200MM THICK WITH 2 LAYERS OF SL 82 REINFORCEMENT. NOT REQUIRED IF THERE IS NO EXISTING PATH.
- NATURE STRIP TO BE MADE FLUSH WITH NEW CONCRETE WORKS AND SHALL BE OF APPROVED TOPSOIL AND SEED.
- WHERE THE MINIMUM CLEARANCES (TABLE 1) CANNOT BE MET, WRITTEN APPROVAL IS REQUIRED FROM MELTON CITY COUNCIL ENGINEERING SERVICES DEPARTMENT.

1/3/2019 9:09:48 AM

ISSUE	APPD	DATE	AMENDMENT
F	M.H.	03/19	REMOVED REO IN PLAN VIEW, REMOVED OLD NOTE 3
E	M.H.	10/17	UPDATED CLEARANCES TO NEW CROSSOVER POLICY
D	M.H.	12/16	REVIEWED AND UPDATED FONT AND DRAWING NUMBER
C	V.C.D.	03/09	REVIEWED AND REVISED PER INTERNAL FEEDBACK
B	V.C.D.	03/09	ADDED TABLE 1 & MODIFIED NOTES

GENERAL NOTES	



DESIGN	L.SHE
DRAWN	L.SHE
CHECKED	M.HUTCHINSON
DATE	APRIL 2016

PROJECT	STANDARD DRAWING - MCC 504
DETAILS	INDUSTRIAL VEHICLE CROSSING

N.T.S.	
SHEET 1 OF 1	PAPER A4
DRAWING No.	REV F
FILE NAME MCC 504 - INDUSTRIAL VEHICLE CROSSING.DWG	