



Bhutanese Community

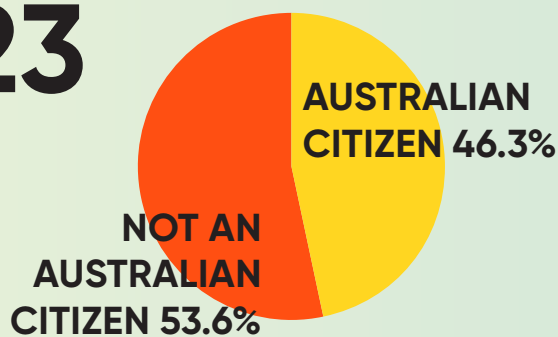
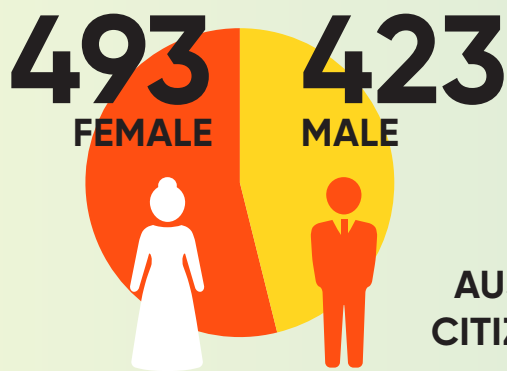
Bhutan is a landlocked country in South Asia situated in the eastern Himalayas, between China in the north and India in south. The capital of Bhutan is Thimphu and it has 20 districts.



POPULATION CHARACTERISTICS

FIGURES FOR VICTORIA

FIGURES FOR VICTORIA



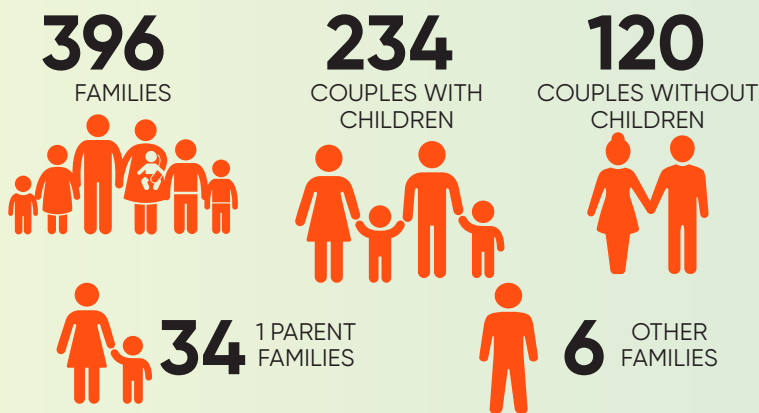
876,181
Population in Bhutan

916
Population in Victoria

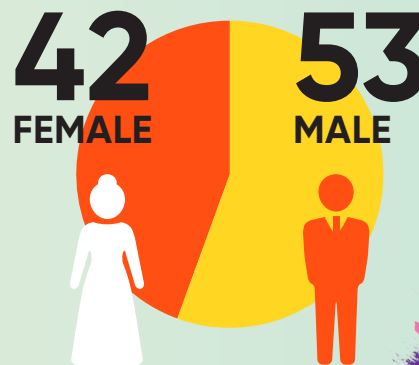
BHUTANESE ARRIVALS IN AUSTRALIA



FAMILY PROFILE (VICTORIA)

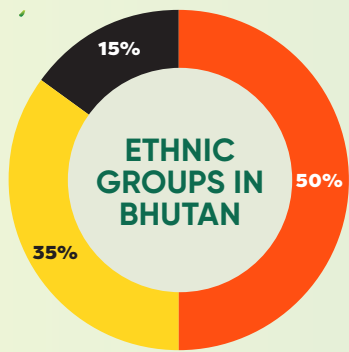


TOTAL BHUTANESE BORN POPULATION IN MELTON

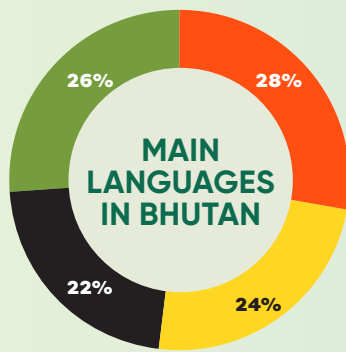


*All the stats are based on 2021 census, so may not reflect the current data (Local Community Members believe it to be a significant under estimation of the actual figures). Note: Please note that there are small random adjustments made to all cell values to protect the confidentiality of data. These adjustments may cause the sum of rows or columns to differ by small amounts from table totals.

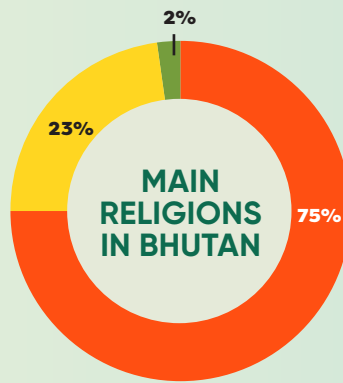




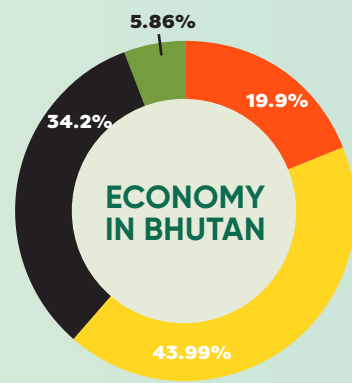
- Drukpa
- Nepali/Lhitshampas
- Indigenous/Migrant tribes



- Sharchopkha
- Dzongkha (Official)
- Lhotshamkha
- Other



- Buddhist
- Hindus
- Other



- Agriculture
- Services
- Industries
- Manufacturing

BHUTANESE CULTURE

VALUES

RELIGION

- Bhutanese culture is predominantly influenced by Buddhism and Hinduism.
- Hindus are obligated to pray twice daily, at dawn and in the evening.
- Important festivals such as Dashain, Deepawali, and Losar are celebrated in October, November, December, and January according to the Hindu and Buddhist calendars.

FAMILY

- Gender roles are considered equal, with both men and women sharing household responsibilities and contributing as breadwinners.
- While arranged marriages are common, love marriages are also widely accepted.
- Traditional family structures include both extended and nuclear families.
- Society expects individuals to respect parents, teachers, elders, and local regulations.

CUSTOMS AND ETIQUETTE

- Greetings are exchanged with “Namaste” accompanied by folded hands, especially to elders, seniors, and respected individuals.
- Respect for seniors and affection for younger individuals are core cultural values.
- Senior members are often addressed with terms like uncle, aunt, brother, or sister rather than their names.
- Hugging is generally avoided when meeting someone of the opposite sex, though same-sex hugging is acceptable.

SETTLEMENT JOURNEY AND CHALLENGES

- Challenges faced by Bhutanese immigrants include lack of familiarity with new local facilities and services and technical skills to work or run a business.
- Limited understanding of other cultures may present obstacles to interact with other communities.
- Many individuals carry trauma and physical and mental health issues from their extended stay in refugee camps.
- The need to simultaneously balance work and education in order to attain financial stability can be a significant challenge.
- Preserving their first language while adapting to a new one may cause apprehension.



For more information visit melton.vic.gov.au/curiousaboutculture or call 9747 7200

All the stats are based on current census data.