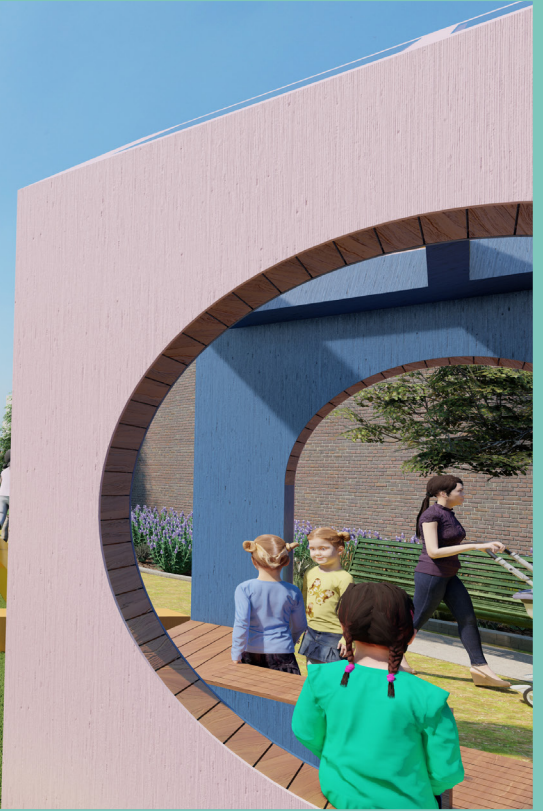


# POP-UP PARK – COMING SOON TO CRADLE ROAD DIGGERS REST



As part of the COVID Safe Outdoor Activation Fund program, Melton City Council is delivering a pop-up park installation in the small park adjoining businesses at 23 - 31 Cradle Road.

The installation will be of a temporary nature of approximately 12-18 months.

The pop-up installation will provide the community with an enhanced space to meet and socialise whilst also increasing business opportunities for local traders.

Construction is scheduled for late August and will take 1-2 days to complete approximately.

