



Growing and thriving A plan to include everyone

Melton City Council



Easy English

Hard words



This book has some hard words.

The first time we write a hard word

- the word is in **blue**

- we write what the hard word means.

You can get help with this book



You can get someone to help you

- read this book

- know what this book is about

- find more information.



We will write contact information at the end of this book.

About this book



This book is from Melton City Council.



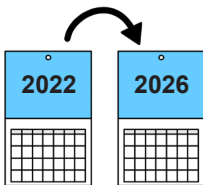
This book is about our **Growing and Thriving Strategy**.



The Growing and Thriving Strategy is about how we will help everyone be part of our community.



We will call it **the strategy**.

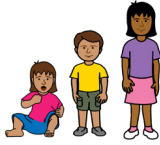


The strategy is from 2022 to 2026.



We want to support

- people with disability



- children



- young people



- older people



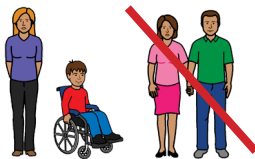
- parents.



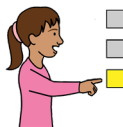
We also want to support carers or **guardians**.

A guardian is someone who

- is **not** your parent



- can help you make decisions.





To make the strategy we spoke to

- people with disability



- carers



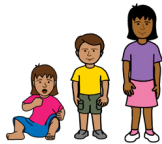
- children and families



- young people



- older people.



Children means people 0 to 12 years old.



Young people means people 13 to 25 years old.



Older people means people 50 years old or older.



We spoke to people

- online



- over the phone

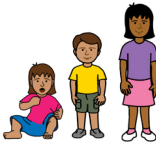


- in person.



We have a different plan for

- people with disability



- children



- young people



- older people.



Each plan says how we help people with disability be part of our community.



What people with disability and carers said



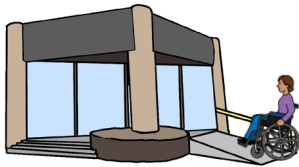
People with disability and carers said it was important for them to be able to

- go to school or university



- get a job

- visit **accessible** places in the City of Melton.



Accessible means places are easy for everyone to

- go to



- use.



People with disability and carers also said they want to

- connect with other people with disability



- make sure that people know about disability



- go to events about **diverse communities** in the City of Melton.

Diverse communities means people with different backgrounds. For example, different



- culture



- religion.



What children and families said



Children and families said it was important to

- go to school



- learn in lots of different ways



- go to events for families



- feel connected to their friends and family



- have places to be active.

For example, parks and gardens.



Children and families also said they wanted better **mental health services**.



Mental health services help people who have **mental illness**.



Mental illness is a health problem that can change the way you

- think



- feel



- act.



What young people said

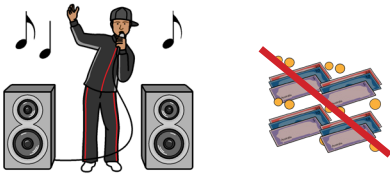
Young people said it was important for them to have



- mental health services



- jobs



- programs and activities that do **not** cost a lot of money.

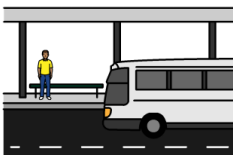


To get around the City of Melton young people want to be able to

- walk



- ride a bike



- use public transport like buses.



Young people also wanted

- to know how they could be part of the community



- to learn and go to school



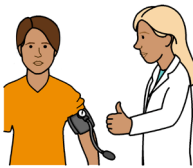
- outdoor community events

- **community services.**

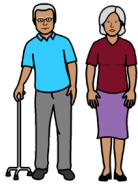
Community services are places that people can get support. For example



- help to find a house



- health services.



What older people said

Older people said it was important that they

- felt safe and connected to other people in the City of Melton



- could get to health and community services

- could go to **inclusive** events.



Inclusive events are when everyone

- can be part of the event

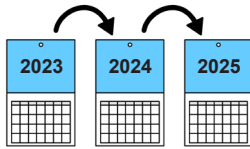


- feels important.



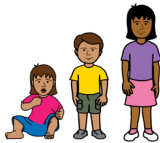
Older people also wanted places to be accessible.

How we will make the City of Melton more inclusive



Every year we will make a plan for how we will support

- people with disability



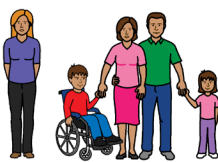
- children



- young people



- older people



- parents and carers or guardians.



At the end of every year we will look at

- how the community feels



- what we could do better.

More information



For more information contact
Melton City Council.



Call 03 9747 7200



Website www.melton.vic.gov.au



Email csu@melton.vic.gov.au



If you do not speak English

Use the free Translating and Interpreting Service or TIS.



Call 131 450

Give the TIS officer the phone number you want to call.



If you need help to speak or listen

Use the National Relay Service.



Website

infrastructure.gov.au/national-relay-service



Call 1800 555 660

Give the relay officer the phone number you want to call.

This Easy English document was created by Scope (Aust) Ltd. in January 2023 using Picture Communication Symbols (PCS). PCS is a trademark of Tobii Dynavox, LLC. All rights reserved. Used with permission. This document must not be sold to third parties. The images must not be reused without permission. For more information about the images, contact Scope on 1300 472 673 or visit scopeaust.org.au