

KEEPING OUR CHILDREN SAFE

- Children up to nine years old should hold an adult's hand in traffic
- School crossings are the safest place to cross the road
- Model safe crossing procedure: STOP, LOOK, LISTEN and THINK
- Drivers must stop at flagged children's crossings if a pedestrian is on, or entering the crossing, even if there is no crossing supervisor present
- Children should exit the vehicle from the rear kerbside door where possible
- Plan your trip, don't change direction of travel
- U turns must be avoided, please use roundabouts to turn your vehicles around where possible

CHILD RESTRAINTS & BOOSTER SEATS

- Children aged 4 years to under 7 years must be properly fastened in an approved adjustable forward-facing restraint with built in harness OR an approved booster seat with a properly fastened and adjustable seatbelt or child safety harness
- Did you know? The Victorian road rules allow a child aged 7 years and over to travel in the front seat of a car, however research shows that children under 12 years of age are at a greater risk of serious injury when travelling in the front seat
- More information can be found at www.vicroads.vic.gov.au/ChildRestraints

HANDY TIPS FOR SAFE PARKING

- Park a few streets away and walk to and from school. Use this time to teach your child about road safety and be a good role model
- Allow enough time to get your child to the school gate safely and without rushing
- Always observe the parking signs around the school
- Never park illegally in a driveway, or on/near a school crossing
- Never double park. It blocks the vision for other drivers, forces children onto the road, obstructs the flow of traffic and may force other drivers to make inappropriate driving choices
- Do not use staff car parks or driveways to drop off your children
- Please remember to be patient, courteous and respectful when driving around schools

Please keep this brochure handy, and show it to all those adults who take your child to and from school.

DRIVING SAFELY AROUND OUR SCHOOL



Safety around our school is everybody's responsibility

Developed in partnership with:



VICTORIA POLICE



OBEY THE SIGNS

Parking unsafely puts children at risk

There are parking restrictions surrounding the school. The area is regularly patrolled by City of Melton Local Law Officers, who will issue penalty notices.

No Stopping Signs

You must not stop at the kerb for any reason.



Speed Limit

Do not exceed 40km/h in school zones.

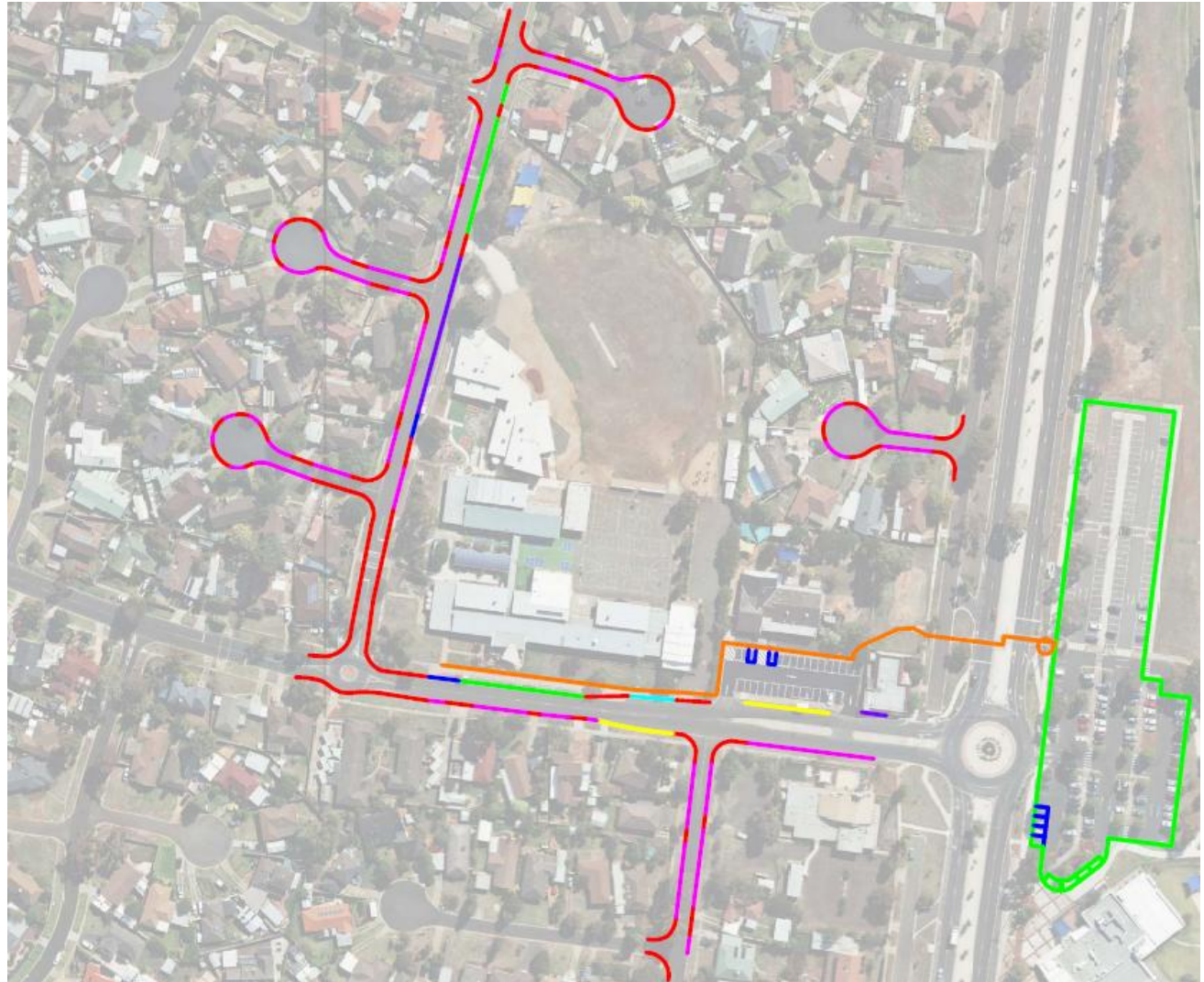
Part Way is OK

Live too far away to walk? Find a point away from the front gate to park and walk part of the way to school.

Melton Waves car park is the ideal Part Way point!



WHERE TO PARK



	Statutory (all times) No Stopping		Time Restricted Parking
	School Times (8-8.30 & 2.30-3.30) No Stopping		Disabled Parking
	Unrestricted Parking		Bus Zone
	Preferred Route (from Melton Waves)		School Bus Zone