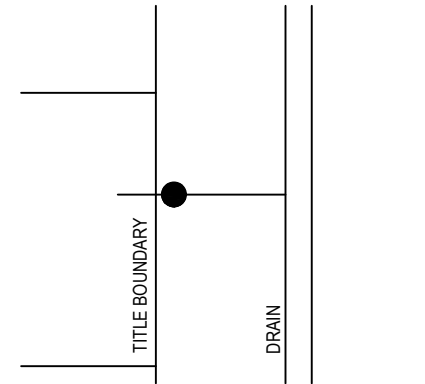


PROPERTY INLET DETAIL
(FOR LANEWAYS)
N.T.S



TYPICAL LOCATION
(FOR LANEWAYS)
N.T.S

NOTES

1. ALL PIPES AND FITTINGS TO BE OF 100mm PVC CLASS SN6, REFER AS 1260
2. ALL PVC JOINTS TO BE SEALED WITH SOLVENT CEMENT OR RUBBER RING JOINTS
3. DEPTH D = MINIMUM 400mm UNLESS APPROVED BY COUNCIL.
4. BACKFILL AROUND RISER PIPE WITH CLASS 3 CRUSHED ROCK OR CLASS 3 CRUSHED CONCRETE.
5. BED PROPERTY CONNECTION PIPE ON 50mm COMPACTED 20mm CLASS 3 CRUSHED ROCK OR CLASS 3 CRUSHED CONCRETE
6. ALL DIMENSIONS IN MILLIMETRES OR AS NOTED OTHERWISE.
7. A TAPPING BAND AND COLLAR ARE TO BE INCLUDED FOR EACH PROPERTY INLET.
8. NOT APPLICABLE TO MELBOURNE WATER CORPORATION DRAINAGE ASSETS. FOR MWC WORKS. REFER TO MWC LAND DEVELOPMENT MANUAL.

23/11/2021 12:15:32 PM

ISSUE	APPD	DATE	AMENDMENT
F			
E			
D			
C			
B	-	12/10/21	INITIAL DRAFT + amendments 25/10 + 08/11 + 22/11

GENERAL NOTES



ENGINEERING SERVICES DEPT

DESIGN	L.SHE
DRAWN	L.SHE
CHECKED	-
DATE	OCT 21

PROJECT	STANDARD DRAWING - MCC 705
DETAILS	PROPERTY INLET TYPE D (FOR LANEWAYS)

N.T.S.	
SHEET 1 OF 1	PAPER A4
DRAWING No. MCC 705	REV A
FILE NAME MCC -LPD IN LANE WAYS V1.DWG	