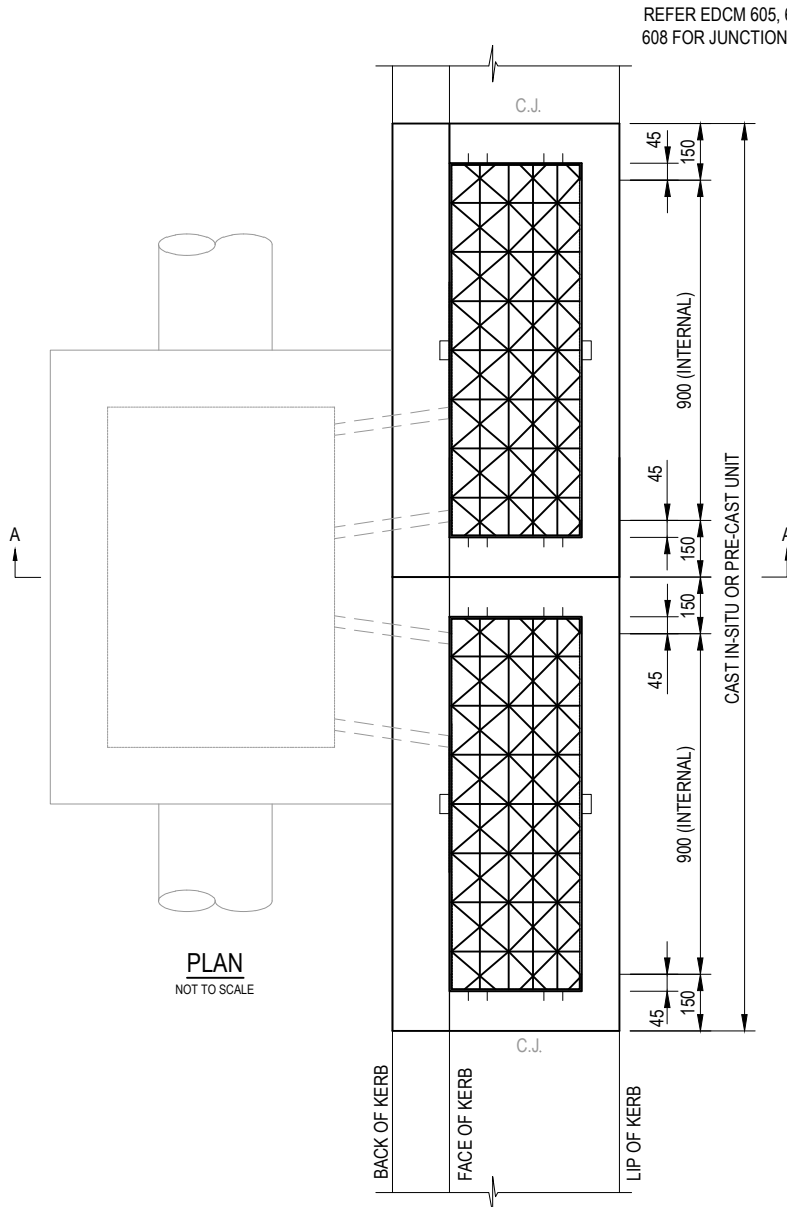
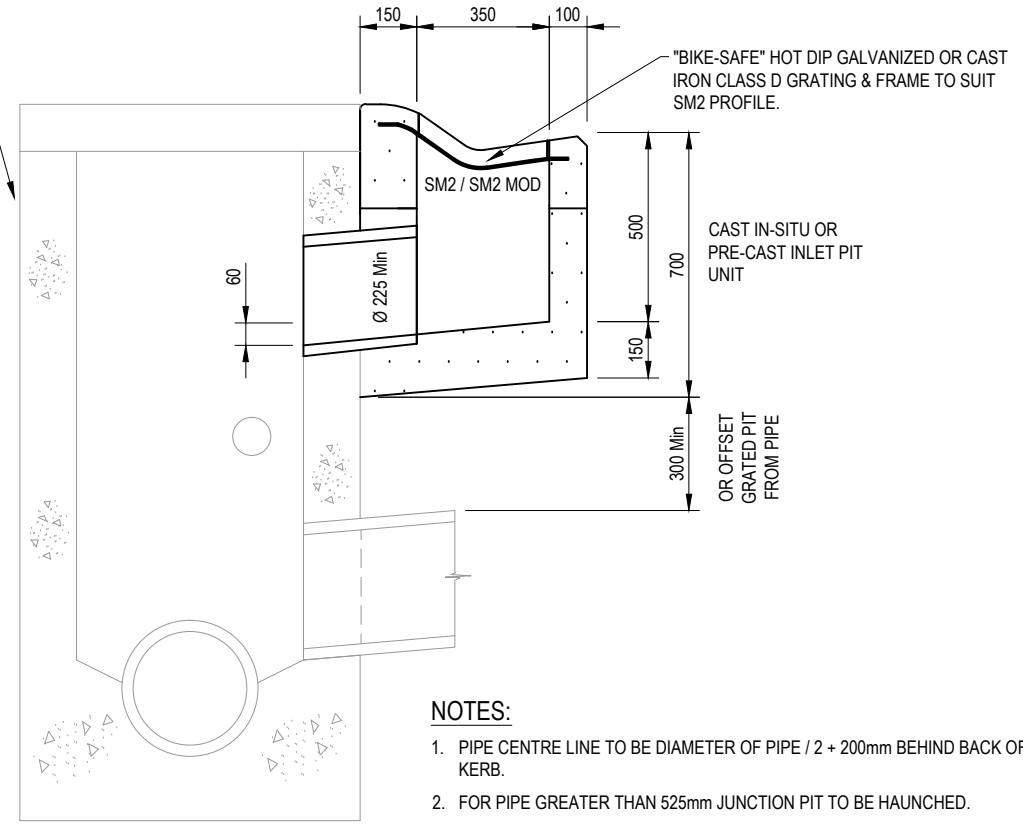


REFER EDCM 605, 606, 607 & 608 FOR JUNCTION DETAILS.



**PLAN**  
NOT TO SCALE



**SECTION A - A**  
NOT TO SCALE

**NOTES:**

1. PIPE CENTRE LINE TO BE DIAMETER OF PIPE / 2 + 200mm BEHIND BACK OF KERB.
2. FOR PIPE GREATER THAN 525mm JUNCTION PIT TO BE HAUNCHED.
3. SUBJECT TO COUNCIL APPROVAL PRECAST PITS COMPLYING WITH AS 5100 BRIDGE DESIGN AND VICROADS SPECIFICATION 705 DRAINAGE PITS MAY BE USED.
4. CHANNEL GRATES TO COMPLY WITH AS 3996, BE FITTED WITH AN APPROVED LOCKING DEVICE AND HAVE A CLEAR OPENING OF 900mm X 350mm.
5. 225mm DIAMETER SEWER GRADE PVC PIPE WHEN GAP BETWEEN CATCH PIT AND JUNCTION PIT IS LESS THAN 300mm. 225mm DIAMETER REINFORCED CONCRETE PIPE WHEN GAP IS GREATER THAN 300mm.
6. SHAPE FLOOR OF PIT TO OUTLET & RENDER FLOOR AND WALLS TO CLASS 2 FINISH.
7. CONCRETE STRENGTH 32 MPa AT 28 DAYS.
8. NOT APPLICABLE TO MELBOURNE WATER CORPORATION DRAINAGE ASSETS. FOR MWC WORKS REFER TO MWC LAND DEVELOPMENT MANUAL

0	FINAL ISSUE	DG	MM	-	16.11.15	
No	Revision	Note: * indicates signatures on original issue of drawing or last revision of drawing	Drawn	Checked	Approved	Date



STANDARD DRAWINGS FOR  
SUBDIVISIONS IN GROWTH AREAS  
**GRATED CHANNEL PIT**  
**SM2 KERB - DOUBLE**

Revision | 0  
Date | DEC 2015  
**EDCM 604**