

Melton Weir Parkland Strategy

JUNE 2024





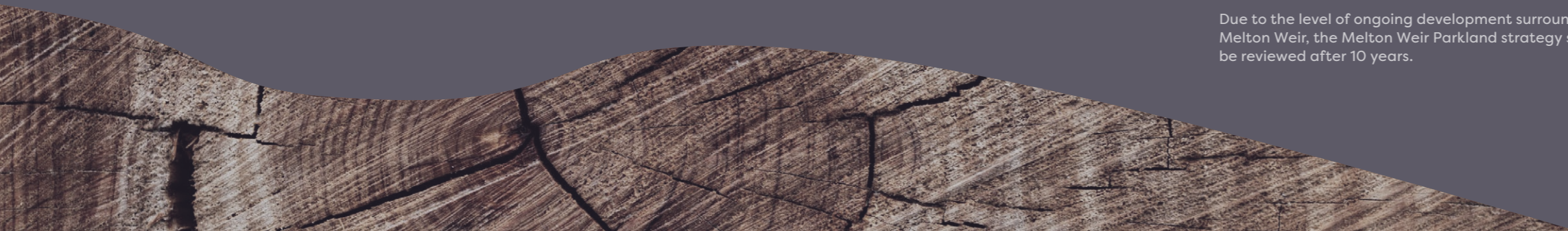
Contents

ACKNOWLEDGMENT OF COUNTRY

Melton City Council acknowledges the Kulin Nations as the Traditional Owners and custodians of this land and pays respect to their Elders past and present.

1. Introduction	2	5. Parkland Strategy	22
Background	3	Parkland Strategy Plan	25
Project Objectives	5	Arnolds Creek Confluence Plan	26
Traditional Owners	6	Parkland Furniture and Fencing	28
History	7	Precedent Imagery	30
Reservoir Water Storage	10		
2. Existing Conditions	12	6. Implementation	3
3. Strategic Context	14	7. Appendix	32
		Appendix A: Strategic Context Summary	37
4. Community Consultation	17	Appendix B: Consultation Summary	41
		Appendix C: Community Feedback Summary	48

Due to the level of ongoing development surrounding Melton Weir, the Melton Weir Parkland strategy should be reviewed after 10 years.



1

Introduction

Background

The Melton Weir, also known as Melton Reservoir, is located to the south of the Melton Township. The City of Melton is one of the fastest growing municipalities in Australia, with the population forecast to grow from **209,145 in 2023** to **416,106 by 2051**.¹

New suburbs are creating an urban interface along the north eastern edge of the weir, including Weir Views and Brookfield. Rural and agricultural properties in Exford abut the western and southern edge of the weir.

The study area for the strategy extends from the western edge of the Scenic Botanica development to the spillway near the Exford Road bridge, and includes connections to Toolern Creek and Arnolds Creek.

The Melton Reservoir is managed by Southern Rural Water. The principal use of the reservoir is for water storage and supply for market gardens throughout the Werribee Irrigation District. Fragmented land ownership and management presents a significant challenge between farmers, developers, Council and Southern Rural Water. There are issues with rubbish dumping and other antisocial activities especially in the area near the end of Clarkes Road.

The Melton Runabout & Speedboat Club (MRSBC) and the Melton Pistol Club are located within the parkland strategy study area. The MRSBC is located towards the southern end of the reservoir on the western bank. Club facilities include clubhouse, boat ramp and viewing areas. The MRSBC host motorboat racing events, including the national level Melton Gold Cup, as well as fishing, water skiing, and wakeboarding². The MRSBC currently operates the only boat ramp in to the reservoir which is only accessible by club members. The Melton Pistol Club is located at the Arnolds Creek confluence. Access to the club is from the end of Clarkes Road. The club is currently closed as it undertakes a review of club operations. There are no plans to relocate the clubs from their existing locations as part of the parkland strategy.

¹ City of Melton population forecasts, <https://forecast.id.com.au/melton>

² 'Notice Board' <https://www.mrsbc.com.au/water-skiing-fishing>



Project Objectives

The objective of the Melton Weir Parkland Strategy is to outline the proposed development of the parklands along the edge of the Melton Reservoir to create a regional destination.

Project objectives are to:

- ~ Identify recreational opportunities along the parkland interface to the reservoir
- ~ Identify opportunities for recreation activities along to the waters edge within the parklands
- ~ Connecting the parklands to broader linear open spaces
- ~ Propose shared path connections to the reservoir and connections to the Melton Township, Eynesbury and Cobblebank Activity Centre
- ~ Develop a prioritised Action Plan including short and long term actions.



Traditional Owners and Aboriginal communities

The Wirribi Yaluk (Werribee River) acts as a boundary between the Wurundjeri Woiwurrung People to the east and Wadawurrang People to the west. Further south along the Wirribi Yaluk is an intersection between the Wurundjeri Woiwurrung People, Wadawurrang People and Bunurong People.³



FIGURE 1.1: Registered Aboriginal Party boundaries within Waterways of the West region.
Source: DECCA, 'Waterways of the West Action Plan', 2021

3 DECCA 'Waterways of the West Action Plan', 2021, p1



FIGURE 1.2: Construction of the Melton Dam.
Source: State Library of Victoria, 1940's

History

In the late 1830s the now Melton area around the Werribee River functioned as a rural service centre for surrounding districts and was mainly used for grazing and farming. Growth in the area was largely due to the gold rush in the 1850s, followed by a second wave of expansion that took place from the 1890s into the early 1900s. This was mainly due to the construction of the railway line and the development of the Melton Reservoir⁴.

The reservoir was constructed between 1913 and 1916 with a capacity of 21,000 megalitres to be used for irrigation downstream at Werribee. In 1937, the embankment was raised and vertical lift spillway gates were installed to increase the capacity to 23,500 megalitres. Siltation has reduced its total volume back to 14,340 megalitres. From 1988 to 1994, additional upgrade works were undertaken. These works included the remodeling of the spillway, removal of the flood gates, and the development of a second spillway.⁵

4 Settlement history', <https://profile.id.com.au/melton/about>

5 'History', <https://www.srw.com.au/water-and-storage/water-storages/melton-reservoir>



FIGURE 1.3: Melton spillway and regulator gates.
Source: State Library of Victoria, 1954



FIGURE 1.4: Arnolds Creek confluence map.
Source: State Library of Victoria, 1964

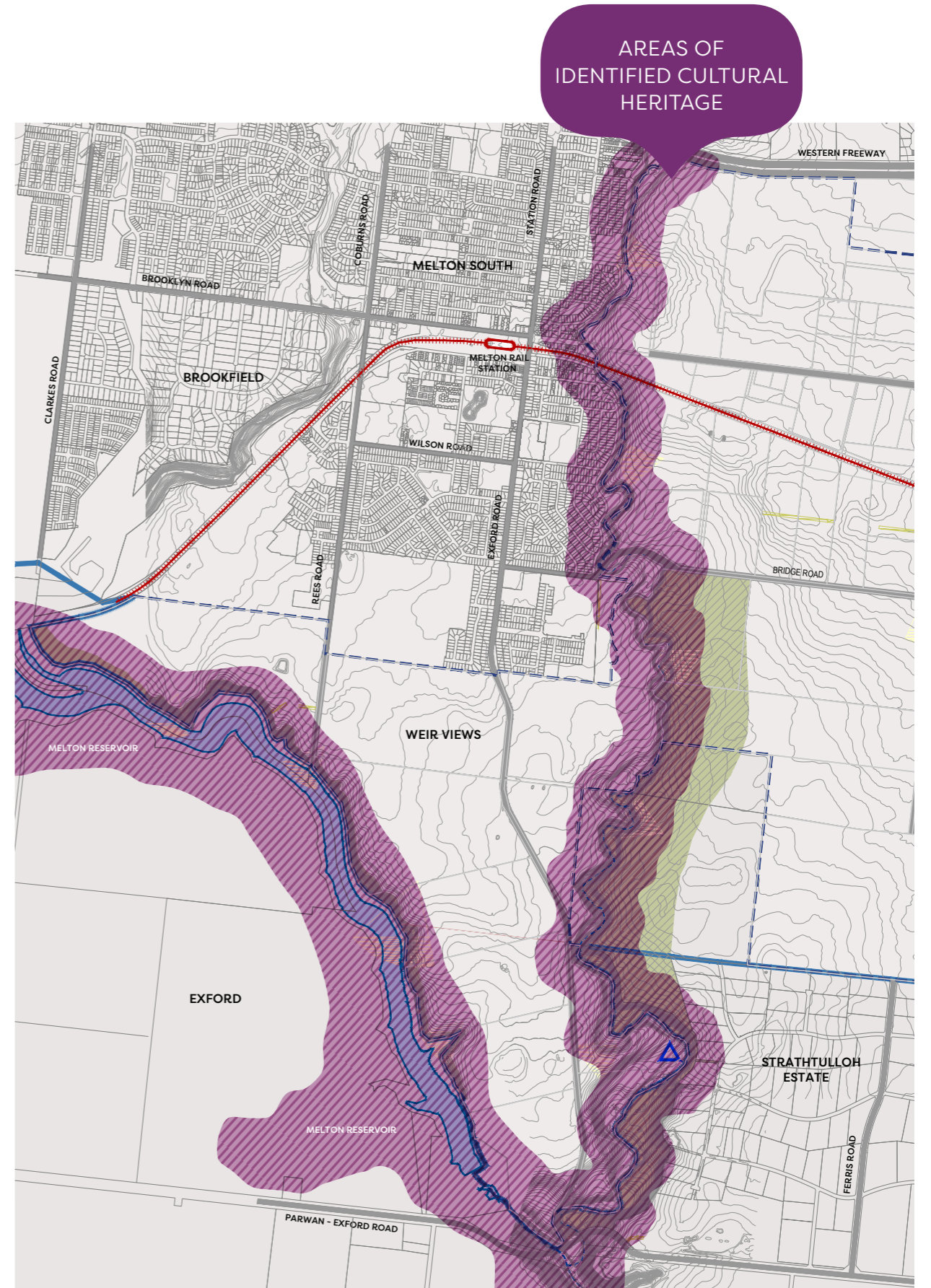


FIGURE 1.5: Heritage Plan.
Source: VPA, Toolern Precinct Structure Plan, 2011

Reservoir Water Storage

The Melton Weir is one of few permanent bodies of freshwater in the western region of metropolitan Melbourne. It is surrounded by steep, rocky escarpments for the majority of the reservoir edges.⁶ The water level fluctuates by up to seven metres in height, reflecting the inconsistent rainfall in the area and irrigation demand.



DECEMBER 2022

FIGURE 1.6 (A & B): Fluctuation of water storage at the Arnolds Creek confluence.

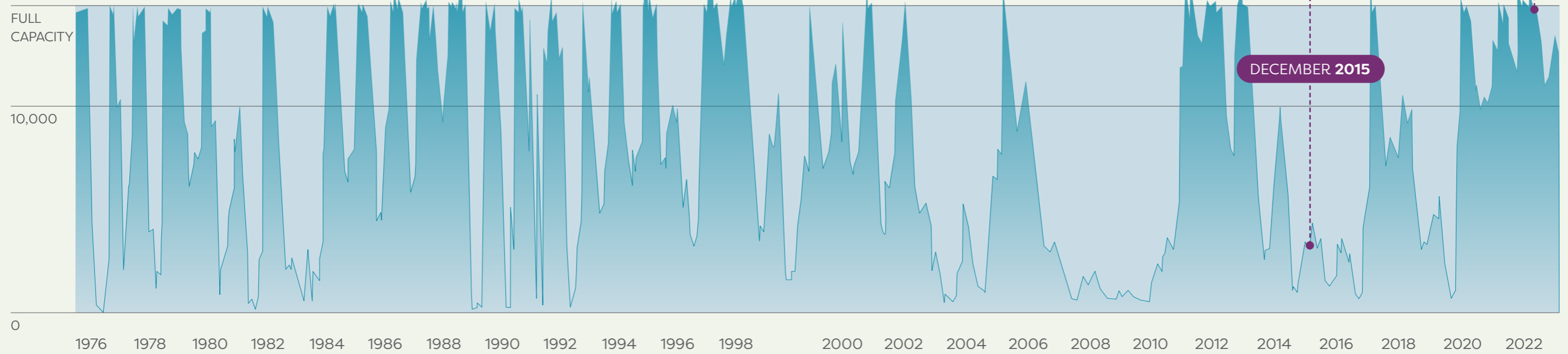


FIGURE 1.7: Melton Reservoir water storage.
Source: Southern Rural Water

Existing Conditions


Heritage listed Federation period Former Melton Stud, grave of 'The Welkin' and the weatherboard stallion box




Historically listed Melton Viaduct




Erosion as a result of unrestricted access and fluctuating water levels



Revegetation of escarpment along new residential interface




Existing Southern Rural Water picnic facilities area near the weir




Carpark and footbridge to Melton Pistol Club from Clarkes Road




Views from shared path along new residential interface




Recently constructed open space interface



New residential development extending towards the weir



Melton Runabout & Speedboat Club: clubhouse and boat ramp



High water levels flowing over the weir and spillway in late 2022



Strategic Context

The following is a summary of key documents that have informed the development of the Melton Weir Parkland Strategy.

The full summary of documents is included in Appendix A.

The Toolern Precinct Structure Plan (Victorian Planning Authority, 2011)

The Toolern Precinct Structure Plan (PSP) defines the parkland boundary and proposed recreation facilities, including trails, neighborhood activity centres, community facilities, schools, open space, vegetation protection and wetlands and waterways.

The PSP also includes the Melton Reservoir open space/residential interface diagram. The diagram in Fig. 3.1 illustrates how the offset to residential development is determined along the interface with the Melton Reservoir. A 25m buffer zone from the top of the break of slope is proposed which includes the location of a shared trail and road reserve so residential lots overlook the Parklands.

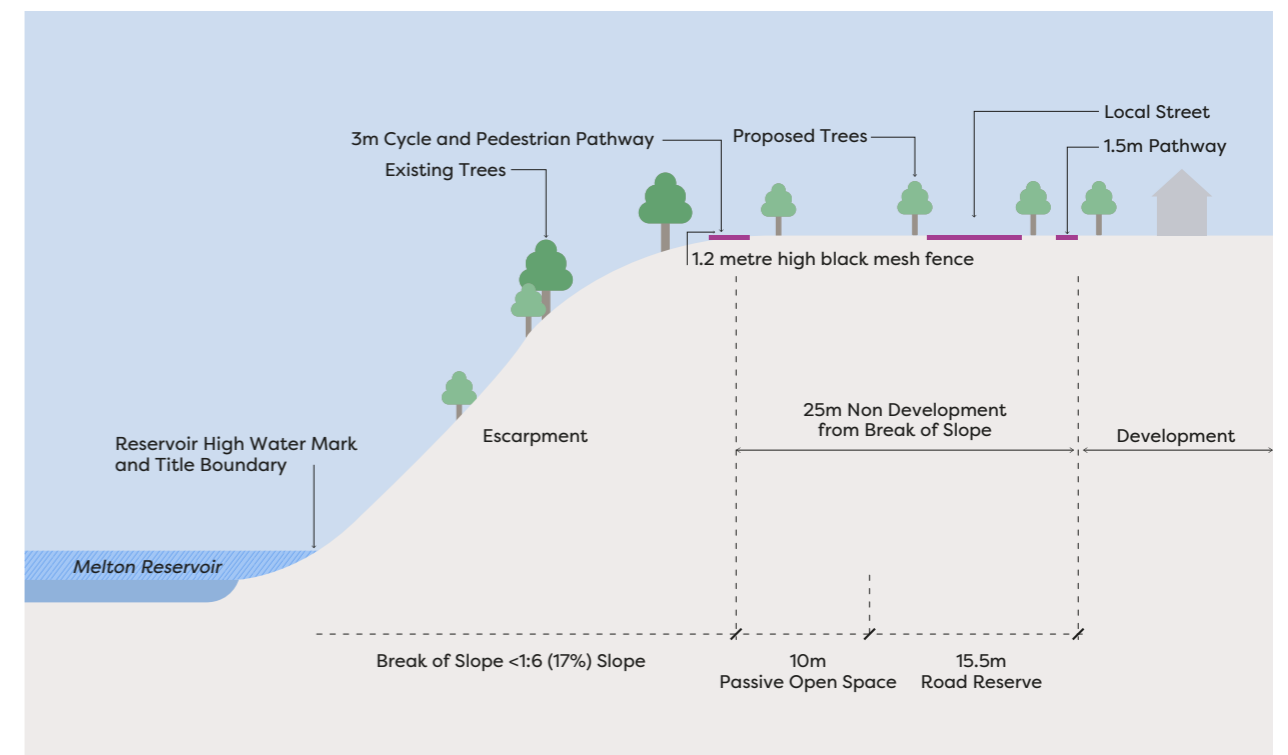


FIGURE 3.1: Melton reservoir open space/residential interface.
Source: Toolern Precinct Structure Plan, 2011, p41

The Melton Reservoir Development Strategy (EDAW Gillespies, 2005)

A previous strategy produced in 2005, recommended a shared path located within a linear park network extending along the eastern edge of the reservoir, linking to the regional open space network along the Werribee River and Djerrivarrh Creek. It also recommended linking the reservoir to the Melton Township.

The strategy proposed the creation of a district level recreation node located at the Arnolds Creek confluence, incorporating sealed roads and car parks, formal picnic

areas, toilets, a playground and a launching area for non-motorised water craft. It recommended a district level passive recreation reserve at the existing Southern Rural Water picnic facility including a viewing platform, upgraded picnic facilities and landscaped areas.

The strategy recommended that a weed management plan is developed and implemented.

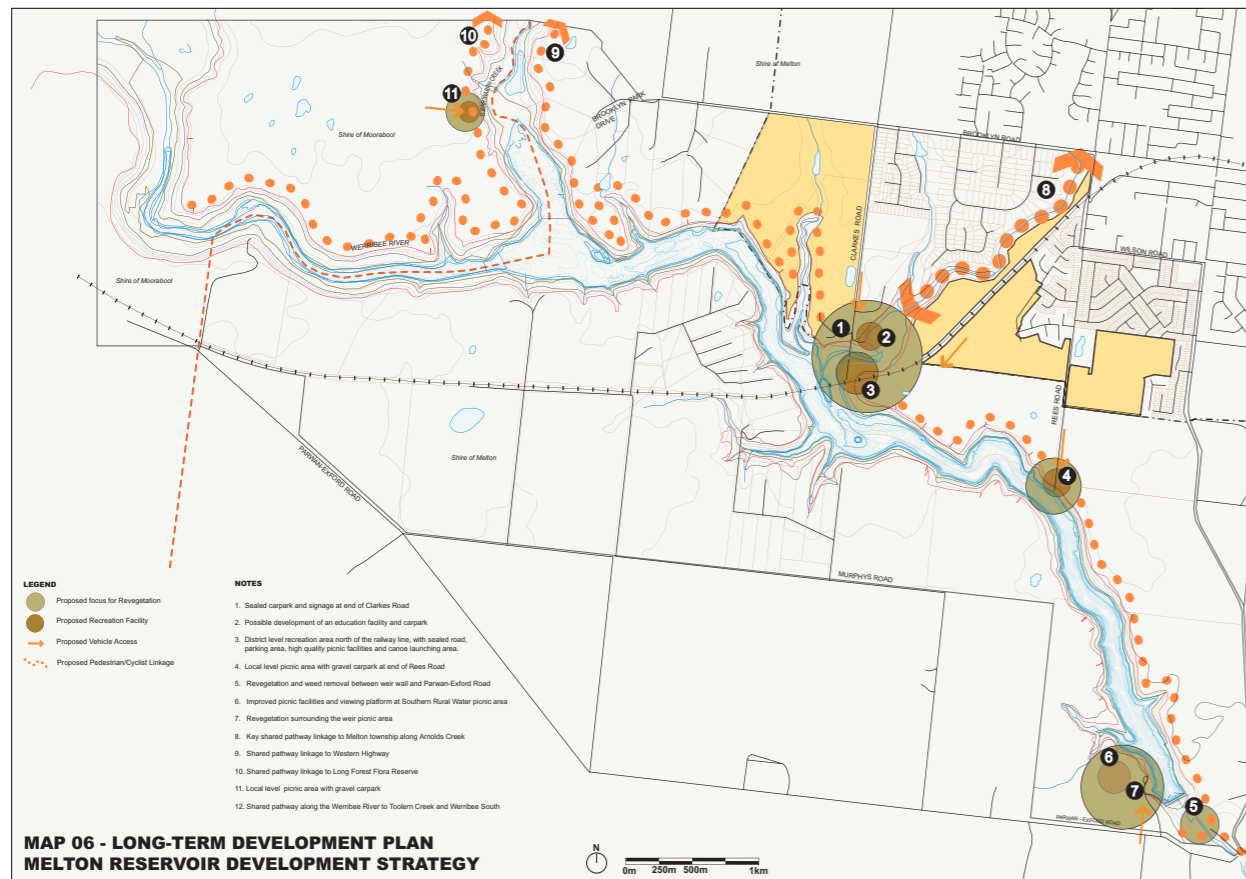
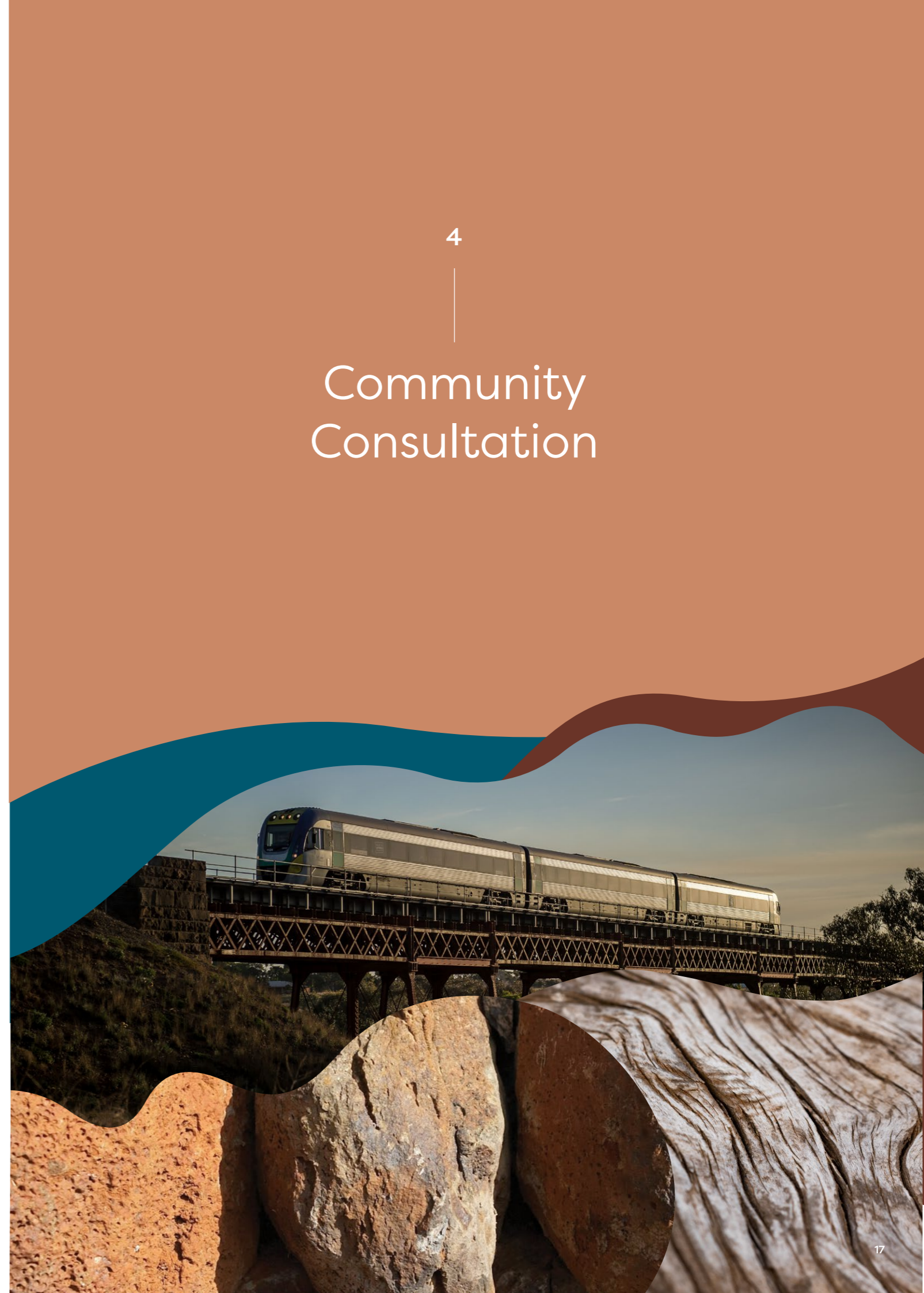


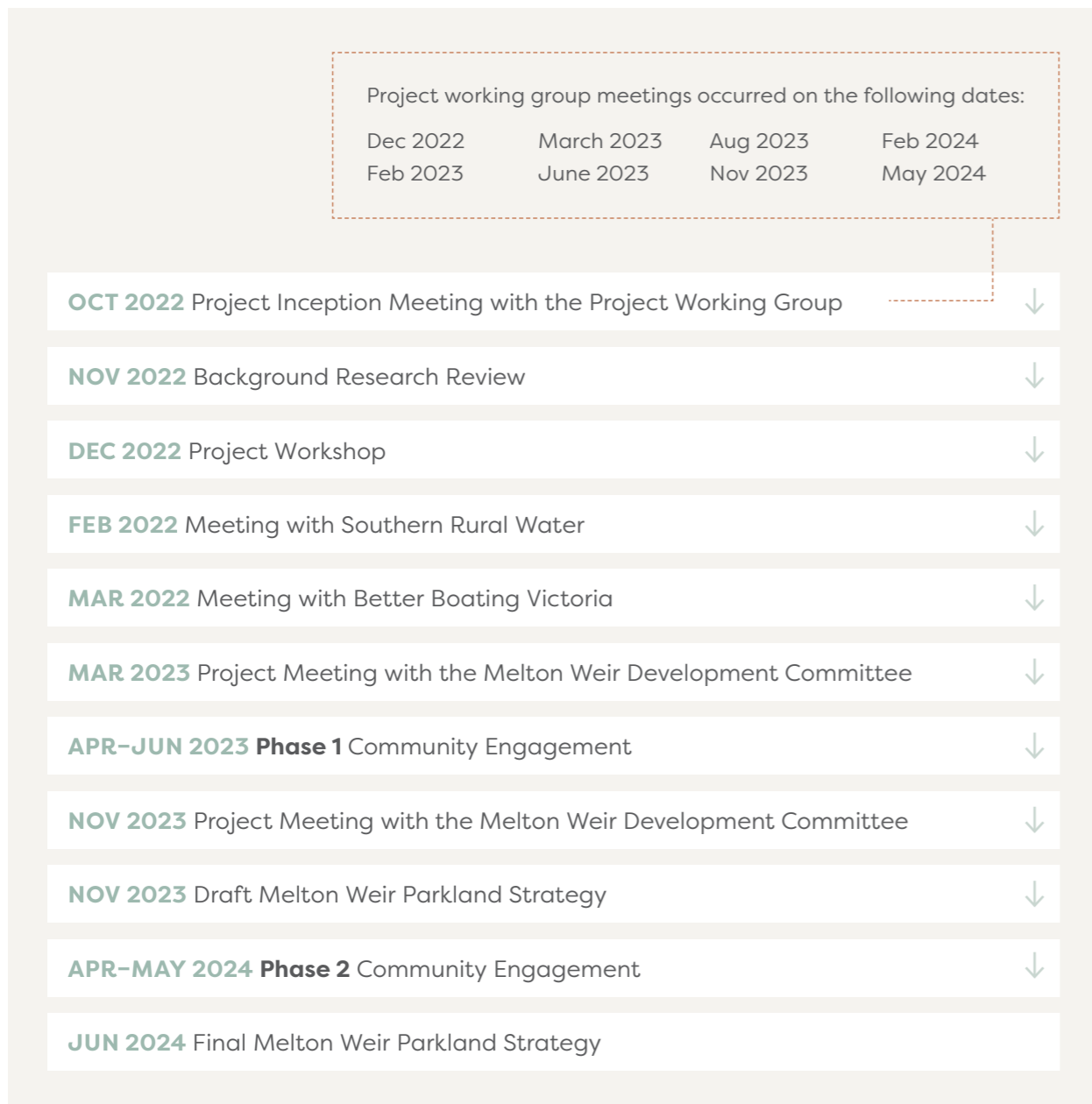
FIGURE 3.2: Long-term development plan.
Source: Melton Reservoir Development Strategy, 2005, p39

Community Consultation



Planning and consultation process

The following graphic provides a summary of the main project phases.



Phase 1: Community Engagement:

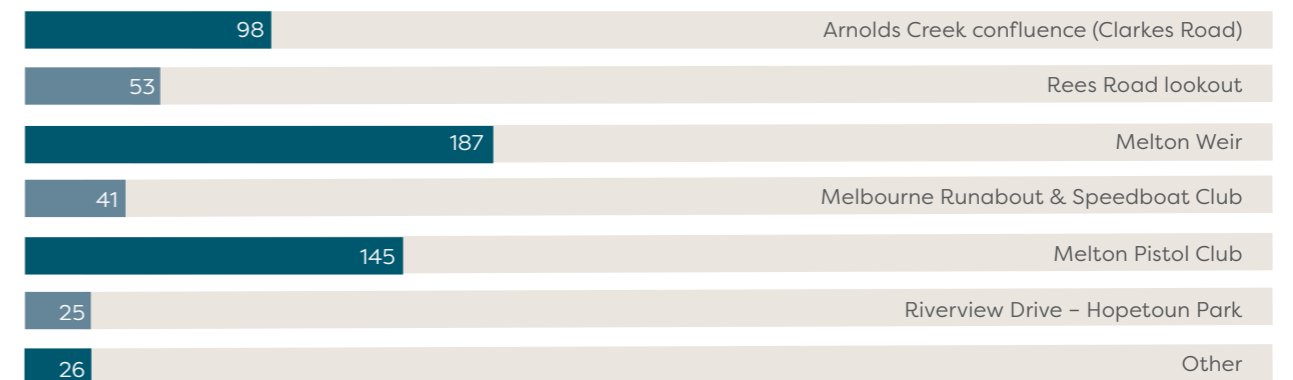
Community engagement for the Melton Weir Parkland Strategy was undertaken in two phases. The first phase of community engagement was completed in June 2023 and included the following:

- ~ The Melton 'Have Your Say' page was publicly available from 24 April to 2 June 2023. The community was invited to provide feedback through the online survey. The survey received 1031 online views and 387 survey respondents.
- ~ A project flyer with a QR code and links to the online survey was mailed to households within a 400m radius of the Melton Reservoir.
- ~ On-site engagement session was held on 13 May 2023.
- ~ 172 respondents registered for updates via the Melton Weir Parkland Strategy project website.

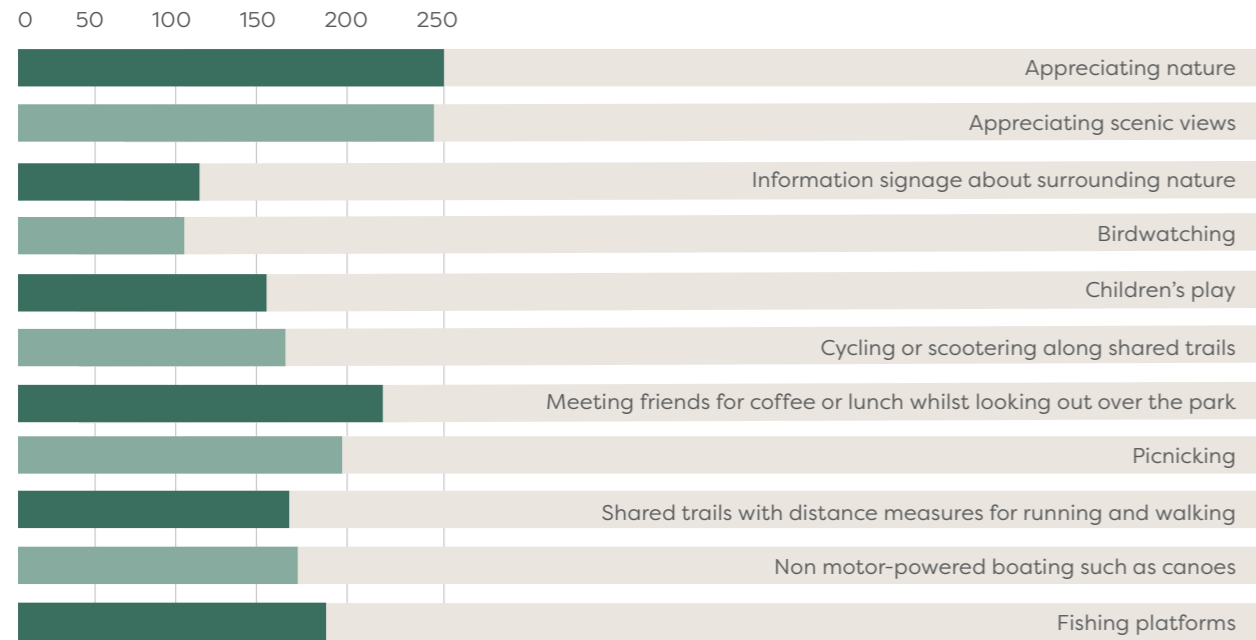


Fig. 4.1: On-site community consultation on 13 May 2023 at the shelter near the end of Rees Road

As shown in the graph below, the online survey and on-site engagement session provided valuable insight into where visitors frequent the parklands, notably the Melton Weir and Arnolds Creek confluence (including the Melton Pistol Club).



The survey also provided information on the types of activities respondents wanted included in the parklands.



In addition to survey questions, the following is a summary of the key issues and opportunities raised by the community.

- ~ There is a lack of viewing options such as lookouts at key scenic locations along the reservoir.
- ~ All trails should be accessible along the eastern edge of the reservoir.
- ~ There is currently low tree canopy cover and native vegetation throughout the parklands.
- ~ There is no public access to the water.
- ~ There is no Wadawurrung and Wurundjeri Woiwurrung representation throughout the parklands.
- ~ There is a preference for public access to the weir and spillway.
- ~ There is a lack of public toilets.
- ~ Opportunities for fishing platforms along the reservoir should be explored.
- ~ Opportunities for public artwork should be explored.

- ~ The local community would like to be involved in the management of the parklands.
- ~ Concerns regarding anti-social behaviour throughout the parklands.
- ~ Rubbish dumping is an issue throughout the parklands.
- ~ There is a lack of signage to access the parklands.

The following issues and opportunities raised during consultation have been taken into consideration and are not proposed to be included in the parklands.

- ~ A designated dog off lead area.
- ~ A designated area for events and festivals.
- ~ Public access to the weir and spillway.
- ~ Free camping spots along the reservoir edge.

The community engagement summary is included in Appendix B.

Phase 2: Community Feedback

The second phase of community engagement was completed in May 2024. The results from the community engagement include the following:

- ~ The Melton Conversations page was publicly available from 9 April to 8 May 2024. The community was invited to provide feedback through the online survey. The survey received 588 online views and 90 survey respondents.
- ~ There were 174 downloads of the Melton Weir Parkland Strategy.
- ~ Overall, the Parkland Strategy received a high level of support across the survey.
- ~ 93% of respondents supported or strongly supported the construction of five viewing platforms.
- ~ 92% of respondents supported or strongly supported a new picnic area at Weir Views near the Weir Spillway.
- ~ 91% of respondents supported or strongly supported two new picnic areas at the Arnolds Creek Confluence.
- ~ 94% of respondents supported or strongly supported the investigation of public toilets at the southern end of Clarkes Road.

The following items had particularly strong support:

- ~ 96% of respondents supported or strongly supported connecting new shared paths within the parklands to the surrounding path network.
- ~ 95% of respondents supported or strongly supported a shared trail connection between Brookfield and Weir Views.

The summary of the second phase of community feedback is included in Appendix C.



5

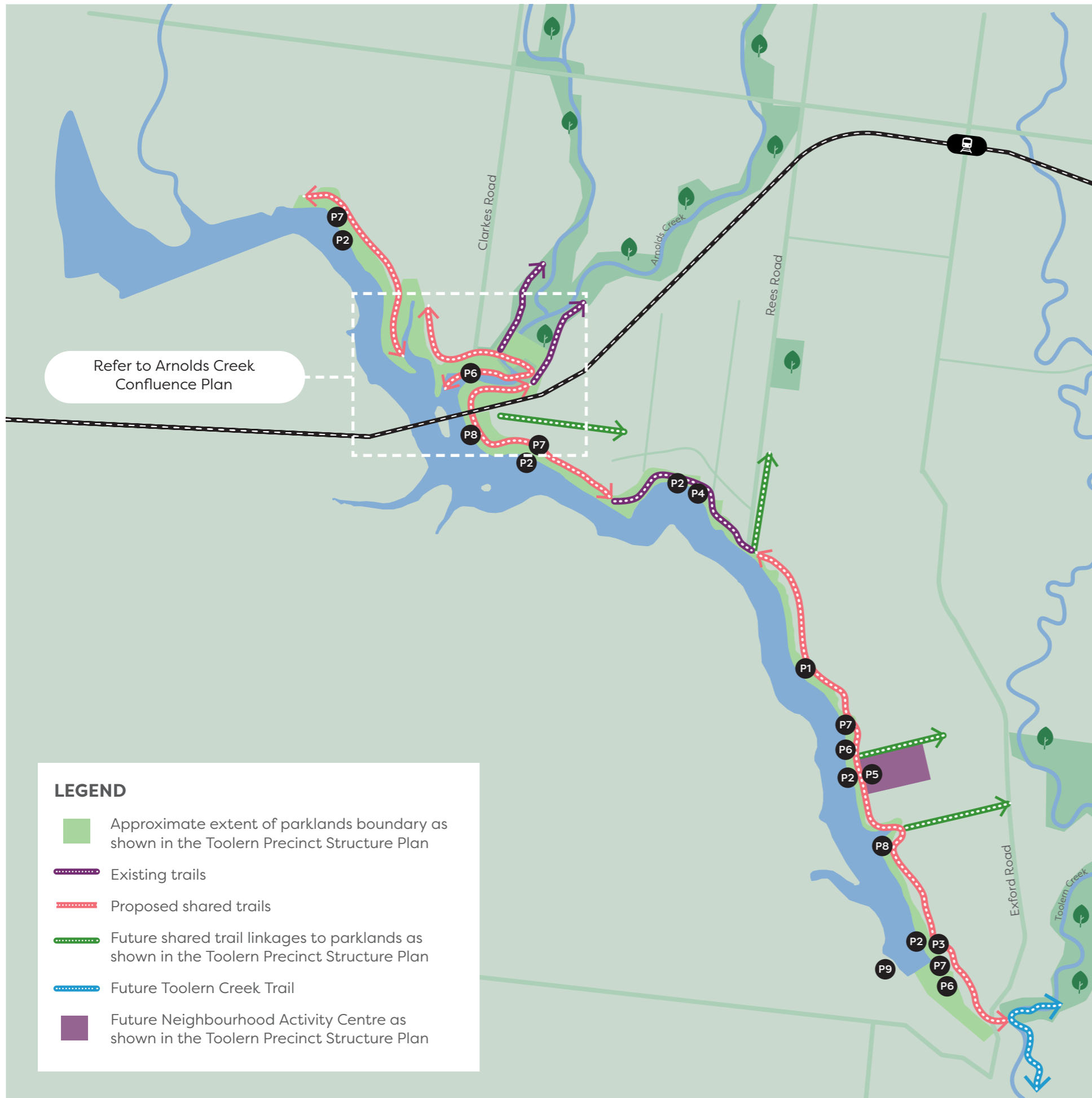
Parkland Strategy

The Melton Weir Parkland Strategy has been developed following the review of site conditions and an analysis of strategic documents and plans. Community and stakeholder engagement has also provided valuable insights and informed the parkland plan.

The following recommendations are not shown on the plan as final locations will be determined as part of detailed design.

1. Install bicycle repair stations at key locations along the shared trail and at the junction of connecting trails.
2. Install seating approximately every 250m along the parklands shared trail.
3. Increase tree canopy cover where appropriate to provide shade and shelter.
4. Install interpretive signage in key locations. Signs to be developed collaboration with Wurundjeri Woiwurrung and Wadawurrung Traditional Owners.
5. Implement wayfinding signage at key locations along shared path.
6. Review process of land management and maintenance to reduce rubbish and dumping at the Parklands and adjoining new residential developments are constructed.



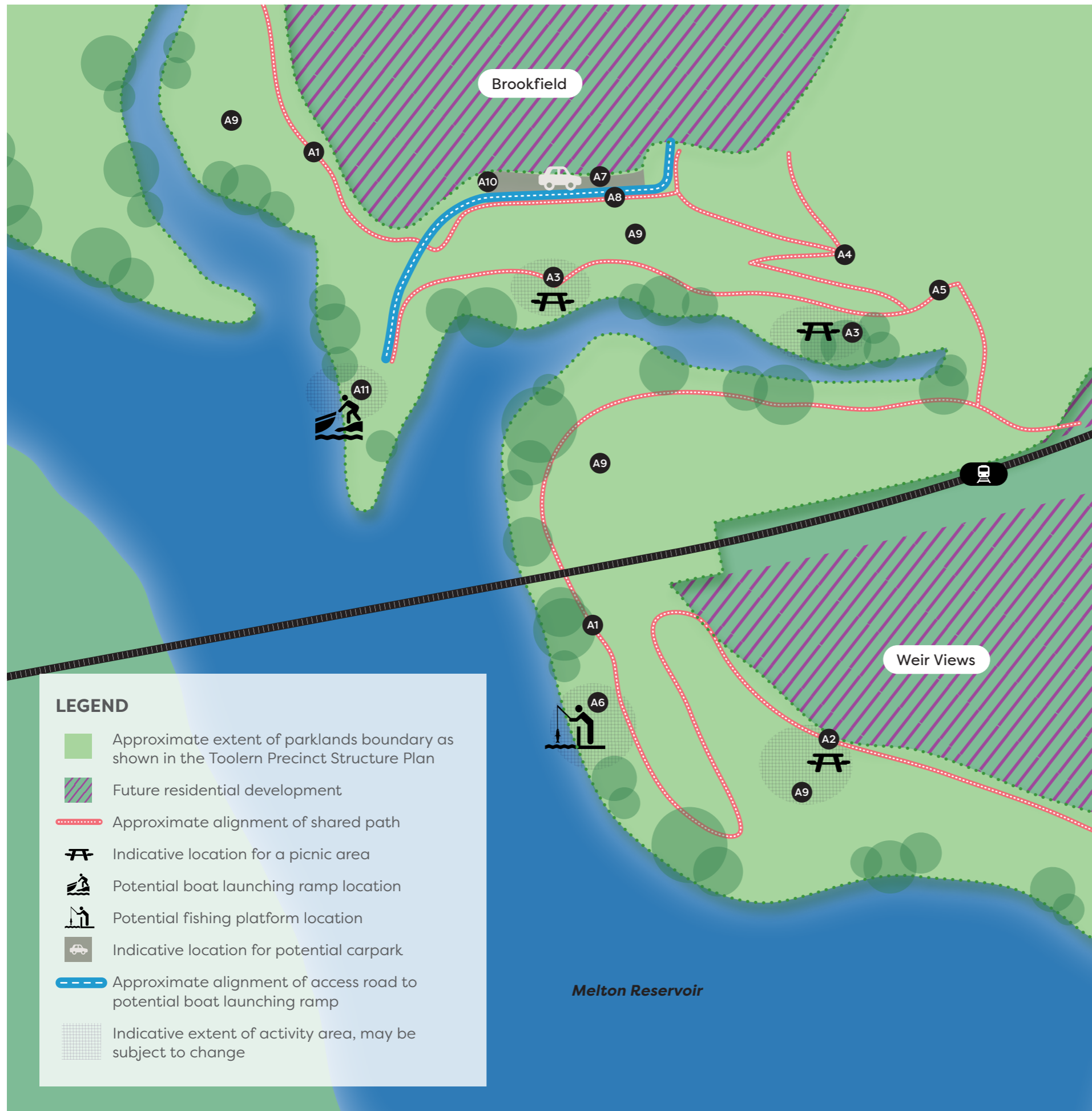


The following recommendations will assist the establishment of the parklands that will be progressively constructed over time. Detail site investigations will be required to determine the final design of the parkland elements.

- P1** Construct a continuous shared path along the eastern edge of the reservoir with connections to existing and future shared paths to the Melton Township, Eynesbury and Cobblebank Activity Centre.
- P2** Construct five viewing platforms at key locations along the parklands to enable visitors to enjoy views of the water and escarpments. Indicative locations include:
 - ~ Brookfield
 - ~ Arnolds Creek confluence
 - ~ at the southern end of Rees Road
 - ~ near the future neighbourhood centre
 - ~ overlooking the weir and spillway in Weir Views.
- P3** Create a new picnic area on the east side of the weir near the spillway featuring a viewing platform, shelter, barbecues, picnic tables and bins.
- P4** Construct multi-sport half court in the parklands at the southern end of Rees Road.
- P5** Investigate the potential location of a waterfront cafe with views over the water as part of the neighbourhood activity centre.
- P6** Install new play spaces. Indicative locations include:
 - ~ at the southern end of Clarkes Road
 - ~ near the future neighbourhood activity centre
 - ~ near the weir wall.
- P7** Install four outdoor gyms in Brookfield, the area south of the rail bridge, near the neighbourhood activity centre and near the weir.
- P8** Investigate opportunities to install two fishing platforms in areas where the topography enables accessible grade paths to the waters edge. Proposed locations are the area south of the Melton Viaduct and the area to the south of the proposed neighbourhood activity centre.
- P9** Decommission the Southern Rural Water picnic facilities and play space returning this area to maintenance and operational uses.

LEGEND

- Approximate extent of parklands boundary as shown in the Toolern Precinct Structure Plan
- Existing trails
- Proposed shared trails
- Future shared trail linkages to parklands as shown in the Toolern Precinct Structure Plan
- Future Toolern Creek Trail
- Future Neighbourhood Activity Centre as shown in the Toolern Precinct Structure Plan




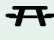



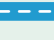



Arnolds Creek Confluence Plan

The Arnolds Creek confluence is proposed to be a key destination within the parklands. The following are proposed upgrades to this precinct.

- A1** Connect Weir Views and Brookfield with a shared trail.
- A2** Create a new picnic area along parkland interface in Weir Views featuring a viewing platform, shelter, barbecues, bins and picnic tables.
- A3** Create a new picnic area on the northern edge of the confluence in close proximity to disabled parking bays featuring a shelter, barbecues, bins and picnic tables.
- A4** Review the existing access road car park at the end of Clarkes Road and investigate the opportunity for an accessible walking track. Access to the Pistol Club is to be retained from Hinkler Crescent.
- A5** Update the existing pedestrian bridge over Arnolds Creek to strengthen the trail connections within the Parklands and surrounding residential areas.
- A6** Investigate opportunities for fishing with the construction of a fishing platform south of the Melton Viaduct in Weir Views.
- A7** Investigate car parking at the end of Clarkes Road.
- A8** Install bollards and fencing to contain access to formalised tracks and revegetate disturbed areas with locally indigenous plant species.
- A9** Revegetate existing escarpments with locally indigenous plant species.
- A10** Investigate public toilets at the end of Clarkes Road.
- A11** Support the study undertaken by Better Boating Victoria and Southern Rural Water in terms of provision of a potential boat launching ramp and vehicular access road at the end of Clarkes Road. The feasibility of a boat launch will be subject to detailed site investigations as well as consideration of the 'on water' safety issues.

LEGEND

-  Approximate extent of parklands boundary as shown in the Toolern Precinct Structure Plan
-  Future residential development
-  Approximate alignment of shared path
-  Indicative location for a picnic area
-  Potential boat launching ramp location
-  Potential fishing platform location
-  Indicative location for potential carpark
-  Approximate alignment of access road to potential boat launching ramp
-  Indicative extent of activity area, may be subject to change

Parkland Furniture and Fencing

The following images are examples of the furniture and fencing proposed for the parklands.



Council standard seat



Council standard picnic table



Double skillion roof shelter as installed in Weir Views



Council standard dual rubbish bins



Council standard bicycle hoops as installed in Weir Views



Fencing as installed in Weir Views



Council standard bicycle repair stand



Council standard drinking fountain

Precedent Imagery

The following images are examples of some of the recommendations proposed for the parklands.



Kanteen, South Yarra.



Examples of riverside dining options to be explored as part of the Neighborhood Activity Centre. Lake Caroline, Caroline Springs.



Create recreation nodes with seating, shelter, bins, drinking fountain, fitness station and bicycle repair station at Wimbledon Blvd, Cobblebank.



Example of a lookout and signage which could be installed on the edge of the escarpment at Farrans Lookout, Tintaldra.

6

Implementation



The following table outlines the The Melton Weir Parkland Strategy actions, delivery responsibility and prioritisation.

Parkland Plan

ITEM	ACTION	DELIVERY RESPONSIBILITY		
		COUNCIL	DEVELOPER	SRW
P1	Construct a continuous shared path along the eastern edge of the reservoir with connections to existing and future shared paths to the Melton Township, Eynesbury and Cobblebank Activity Centre.	•	•	
P2	Construct five viewing platforms at key locations along the parklands to enable visitors to enjoy views of the water and escarpments. Indicative locations include: <ul style="list-style-type: none"> ~ Brookfield, ~ Arnolds Creek confluence, ~ at the southern end of Rees Road, ~ near the future neighbourhood activity centre, ~ overlooking the weir and spillway in Weir Views. 	•	•	
P3	Create a new picnic area on the east side of the weir near the spillway featuring a viewing platform, shelter, barbecues, picnic tables and bins.	•	•	
P4	Construct basketball half court in parklands at the end of Rees Road.	•		
P5	Investigate the potential location of a waterfront cafe with views over the water as part of the neighbourhood centre.	•	•	

Parkland Plan continued

ITEM	ACTION	DELIVERY RESPONSIBILITY		
		COUNCIL	DEVELOPER	SRW
P6	Install new play spaces. Indicative locations include: ~ at the southern end of Clarkes Road, ~ near the future neighbourhood activity centre, ~ near the weir wall.	•	•	
P7	Install four outdoor gyms in Brookfield, area south of the rail bridge, near the neighbourhood centre and near the weir	•	•	
P8	Investigate opportunities to install two fishing platforms in areas where the topography enables accessible grade paths to the waters edge. Proposed locations are the area south of the Melton Viaduct and the area to the south of the proposed neighbourhood activity centre	•	•	•
P9	Decommission the Southern Rural Water picnic facilities and play space returning this area to maintenance and operational uses.	•		•
P10	Install bicycle repair stations at key locations along the shared trail and at the junction of connecting trails.	•	•	
P11	Install seating approximately every 250m along the parklands shared trail.	•	•	
P12	Increase tree canopy cover where appropriate to provide shade and shelter.	•	•	
P13	Install interpretive signage in key locations along the parkland trail. Signage to be in English, Woivurrung and Wadawurrung text.	•	•	
P14	Implement wayfinding signage at key locations along shared path.	•	•	
P15	Review the process of land management and maintenance to reduce rubbish and dumping at the parklands and adjoining new residential developments are constructed.	•		

Arnolds Creek Confluence Plan

ITEM	ACTION	DELIVERY RESPONSIBILITY			
		COUNCIL	DEVELOPER	SRW	BETTER BOATING VICTORIA
A1	Connect Weir Views and Brookfield with a shared trail.	•	•		
A2	Create a new picnic area along parkland interface in Weir Views featuring a viewing platform, shelter, barbecues, bins and picnic tables. (Viewing platform including in item P2)	•	•		
A3	Create a new picnic area on the northern edge of the confluence in close proximity to disabled parking bays featuring a shelter, barbecues, bins and picnic tables.	•			
A4	Replace the existing access road and carpark at the end of Clarkes Road with accessible walking tracks. Access to the Pistol Club is to be retained from Hinkler Crescent.	•			
A5	Update the existing pedestrian bridge over Arnolds Creek to strengthen the trail connections within the parklands and surrounding residential areas.	•			
A6	Investigate opportunities for fishing with the construction of fishing platform south of the Melton Viaduct in Weir Views.	•	•	•	
A7	Investigate car parking at the end of Clarkes Road.	•			
A8	Install bollards and fencing to contain access to formalised tracks and revegetate disturbed areas with locally indigenous plant species.	•			
A9	Revegetation of existing escarpments with locally indigenous plant species.	•	•	•	
A10	Investigate public toilets at the end of Clarkes Road.	•			
A11	Investigate the installation of a boat launching ramp and vehicular access road at the end of Clarkes Road. The feasibility of a boat launch will be subject to detailed site investigations as well as consideration of the 'on water' safety issues.	•		•	•

Appendix

Appendix A: Strategic Context Summary

The following is a summary of key documents that have informed the development of the Melton Weir Parkland Strategy.

The Toolern Precinct Structure Plan (Victorian Planning Authority, 2011)

The Toolern Precinct Structure Plan (PSP) is a key influence of the Parkland Strategy. It defines the parkland boundary and has proposed recreation facilities including trails, neighbourhood activity centres, open spaces, vegetation protection, location community facilities/schools, wetlands and waterways.

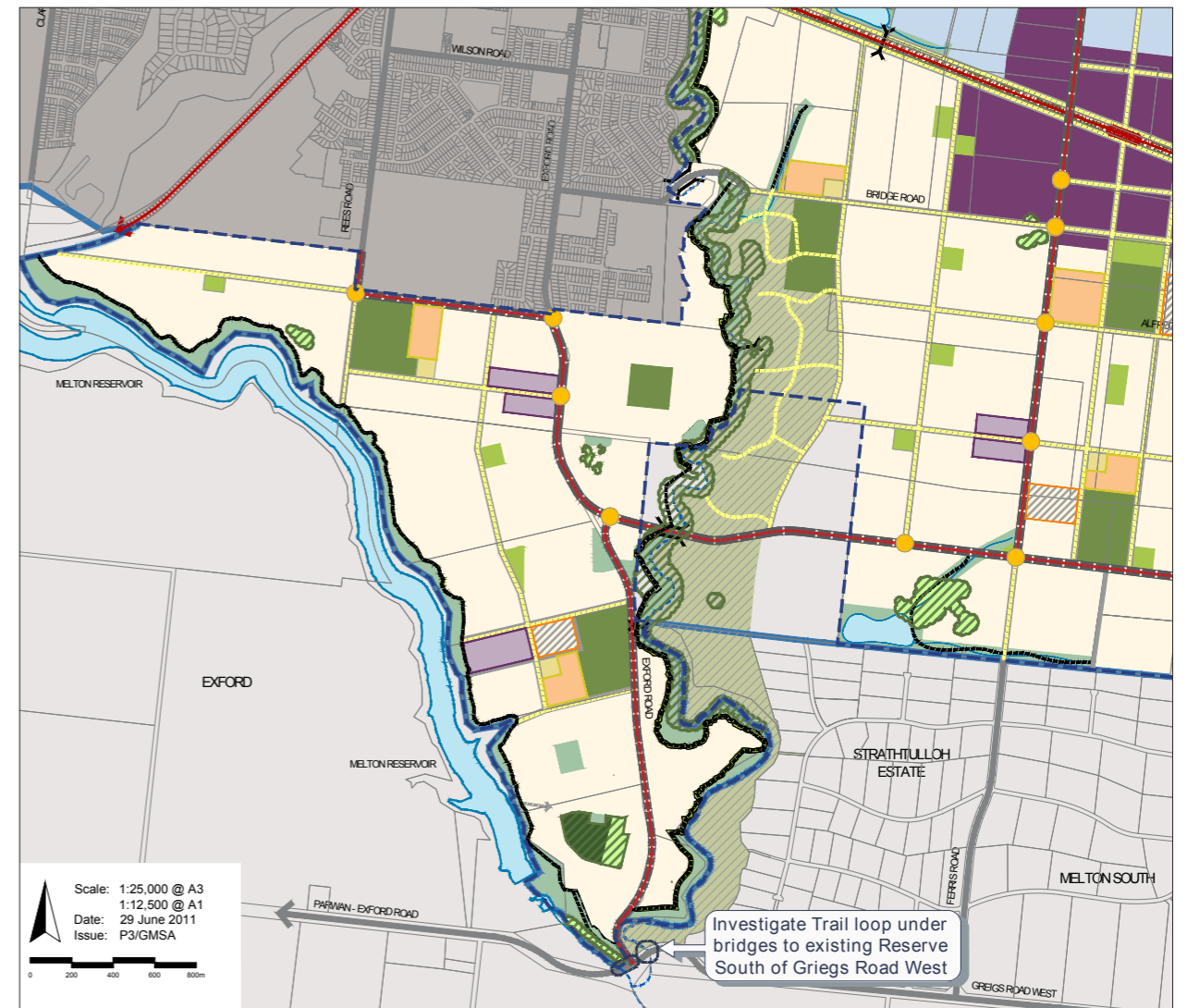


Fig. 7.1: Walking and Trails Plan. Source: Toolern Precinct Structure Plan, 2011, p62

Scenic Botanica Landscape Master Plan (CJ ARMS Landscape Architecture, 2021)

The Scenic Botanica Landscape Master Plan is a 10 stage residential development proposal located along Clarkes Road, Brooklyn Road, and the Melton Reservoir. Along the Melton Reservoir interface, a 3 metre wide shared path is proposed. At the south-east boundary of the development site, the shared path stops and is required to continue into the neighbouring parcel.



Fig. 7.2: Endorsed Landscape Master Plan. Source: Scenic Botanica Landscape Master Plan, 2021, p1.

The Werribee River Shared Trail Strategy (Hansen Partnership, 2013)

The Werribee River Shared Trail Strategy identifies opportunities for broader community and tourism benefits including infrastructure such as trail links and formal access to the Werribee River. The strategy recommends that the shared path is a 3 metre wide reinforced concrete trail of 250mm depth on crushed rock with 0.5 metre wide grassed runoff either side.

Linking the Melton Weir Parklands to the Werribee River Trail will provide opportunities as a recreational role in the broader metropolitan trail network.

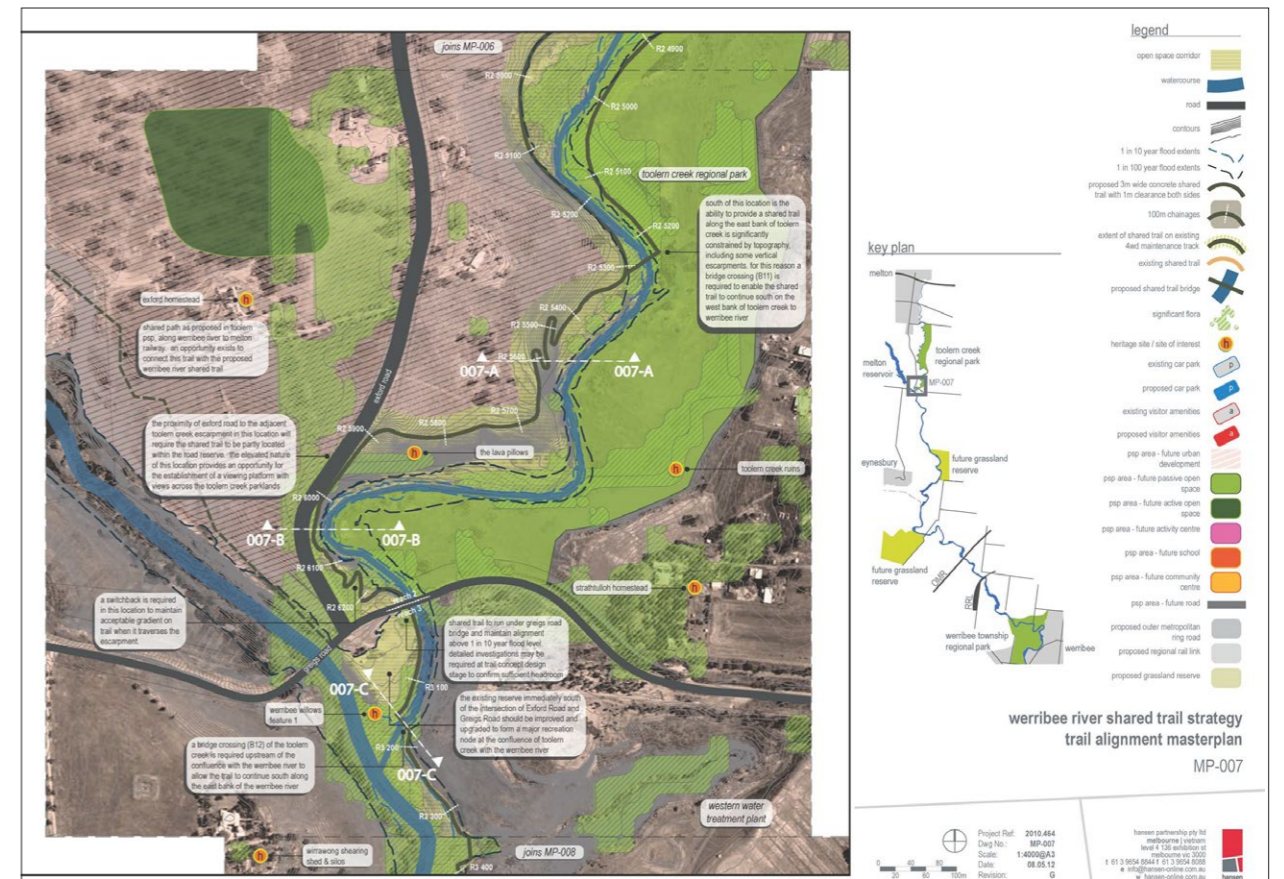


Fig. 7.3: Trail Alignment. Source: Werribee River Shared Trail Strategy, 2013, p52.

Victorian Recreational Boating Strategy 2021 – 2030 (Better Boating Victoria, 2021)

This strategy sets out a number of objectives aiming to improve the maintenance of public facilities, renewing and building new boating facilities, improving access and navigation and investing in destination locations. The strategy identifies Melton Reservoir as a potential location for new boating facilities. Boating facilities considered include boat ramps, pontoons and jettys, car and trailer unit parking and lighting.

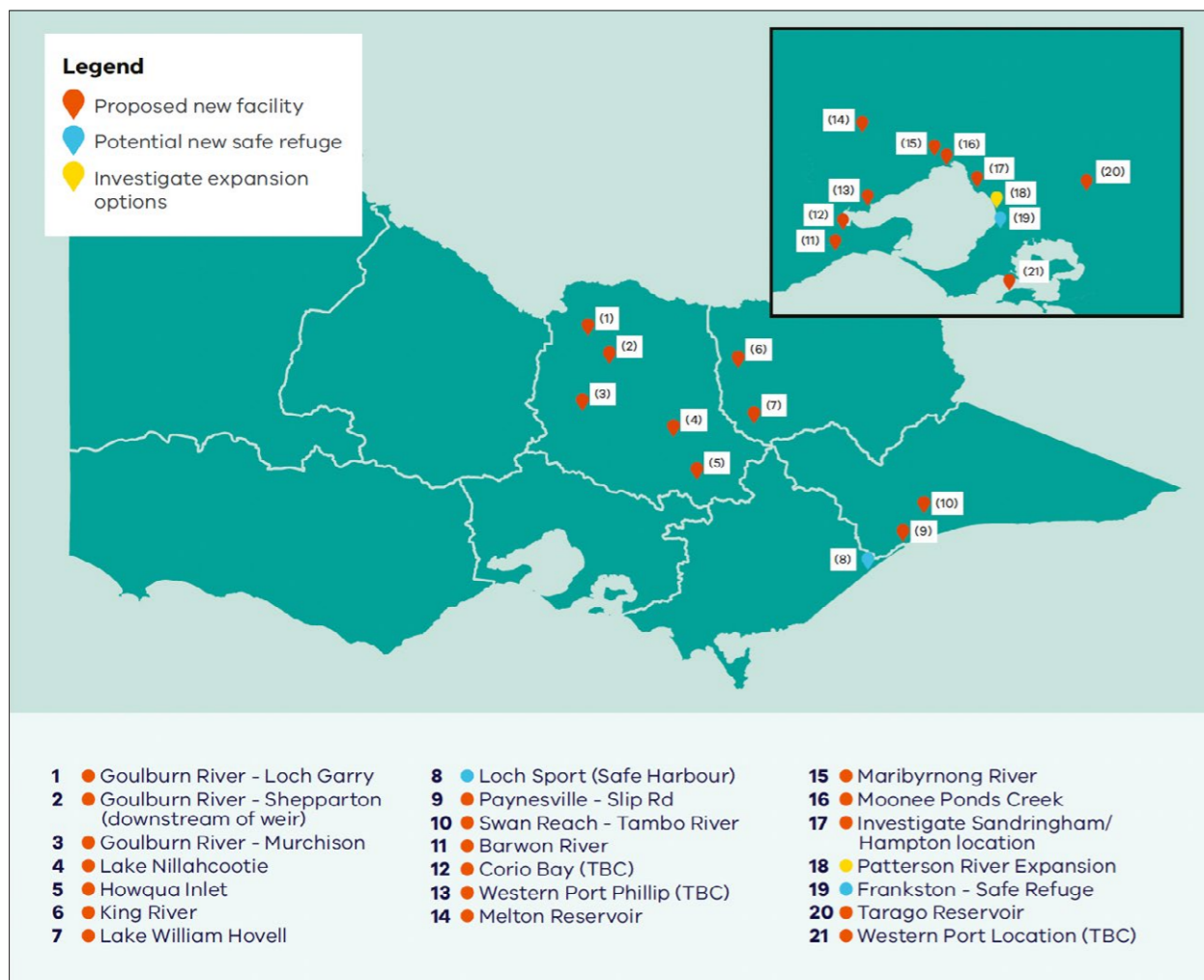


Fig. 7.4: A map showing potential new boat launch facilities across Victoria. Source: Victorian Recreational Boating Strategy 2021 – 2030 , 2021, p33.

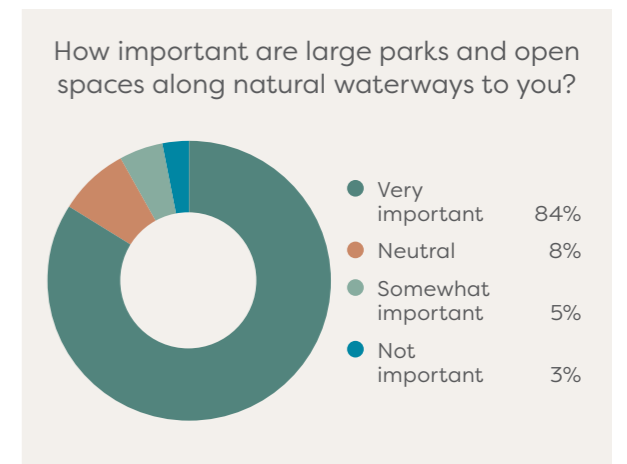
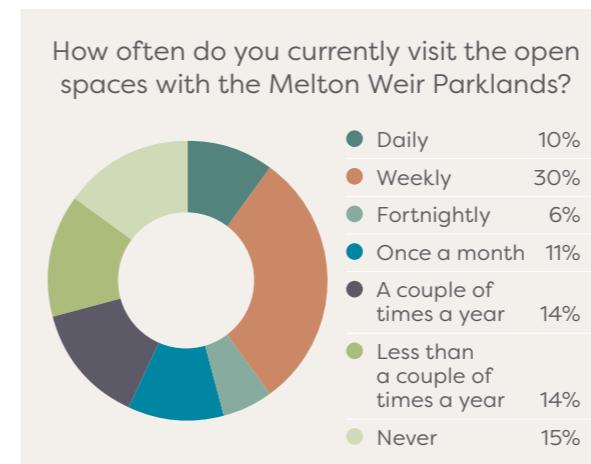
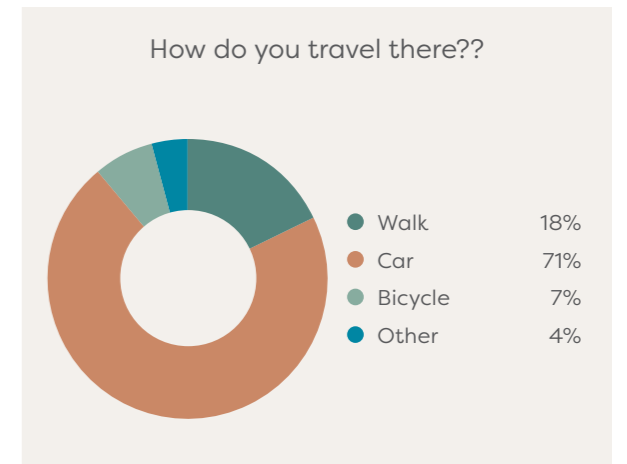
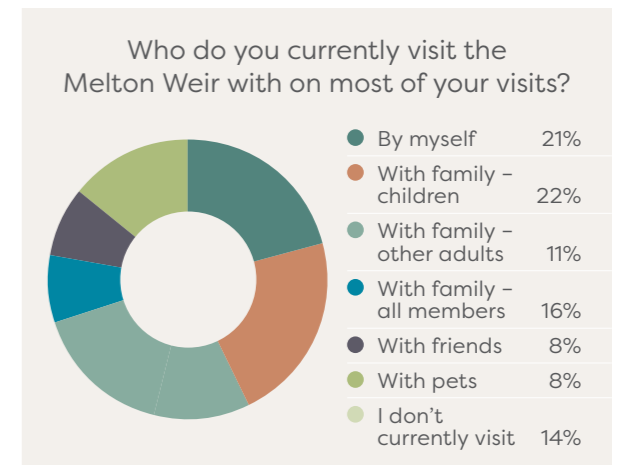
Appendix B: Consultation Summary

The following table provides a summary of key findings, comments or suggestions from initial consultation with key stakeholders as part of the Parklands Plan.

Between 24 April and 2 June 2023, Melton City Council conducted community engagement for the Melton Weir Parkland Strategy.

Feedback was collected via an online survey, accompanied by a hard copy flyer which was dropped off to residents within a 400m radius of the reservoir. In-person consultation was held at the lookout shelter at the end of Rees Road, Weir Views on the 13 May 2023 with approximately 40 people attending. There was a total of 1031 online views and 387 responses were received. 172 respondents registered for future updates via email.

Below is a summary of the feedback received. This feedback helps Council to understand what is important to the community.



Melton Weir Parklands

INFORMATION SESSION

WHEN: Saturday 13 May, 10am-1pm

WHERE: Marriott Boulevard (picnic shelter near Shackell Street intersection), Weir Views

HAVE YOUR SAY: Tell us how you would like to use the open space along the Melton Weir and Reservoir

Visit: [Conversations.melton.vic.gov.au/Melton Weir](https://conversations.melton.vic.gov.au/MeltonWeir) or call us on 9747 7200



Interpreter service:
Call 13 14 50 and ask to be put through to Melton City Council on 9747 7200.



Have your say!

Help us develop a strategy to improve the parklands along the Melton Weir and Reservoir.

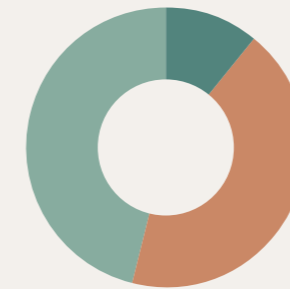
We're considering ways to linking hectares of open space, connect more people to the water and parklands, and make the most of the natural setting.

Complete the online survey and let us know how you would like to use the open space along the Melton Weir and Reservoir.



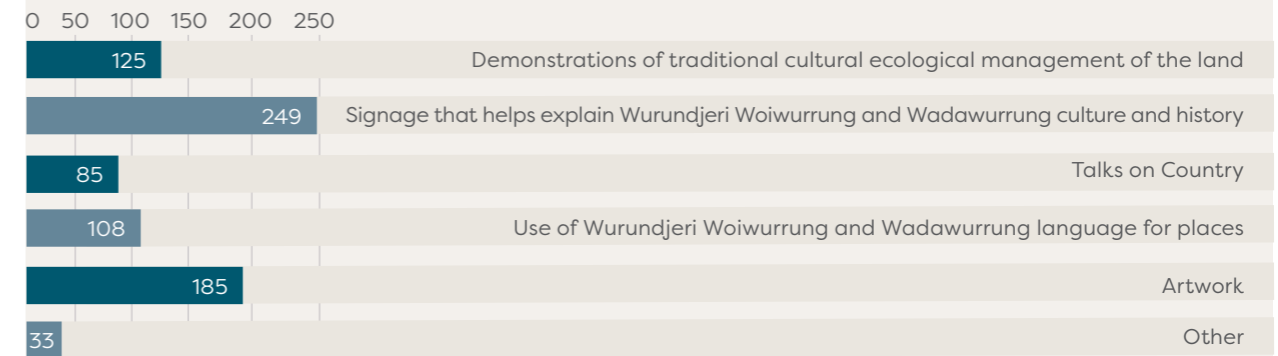
Scan the QR Code

Do you know much about the cultural heritage and history of Melton Weir Parklands area?



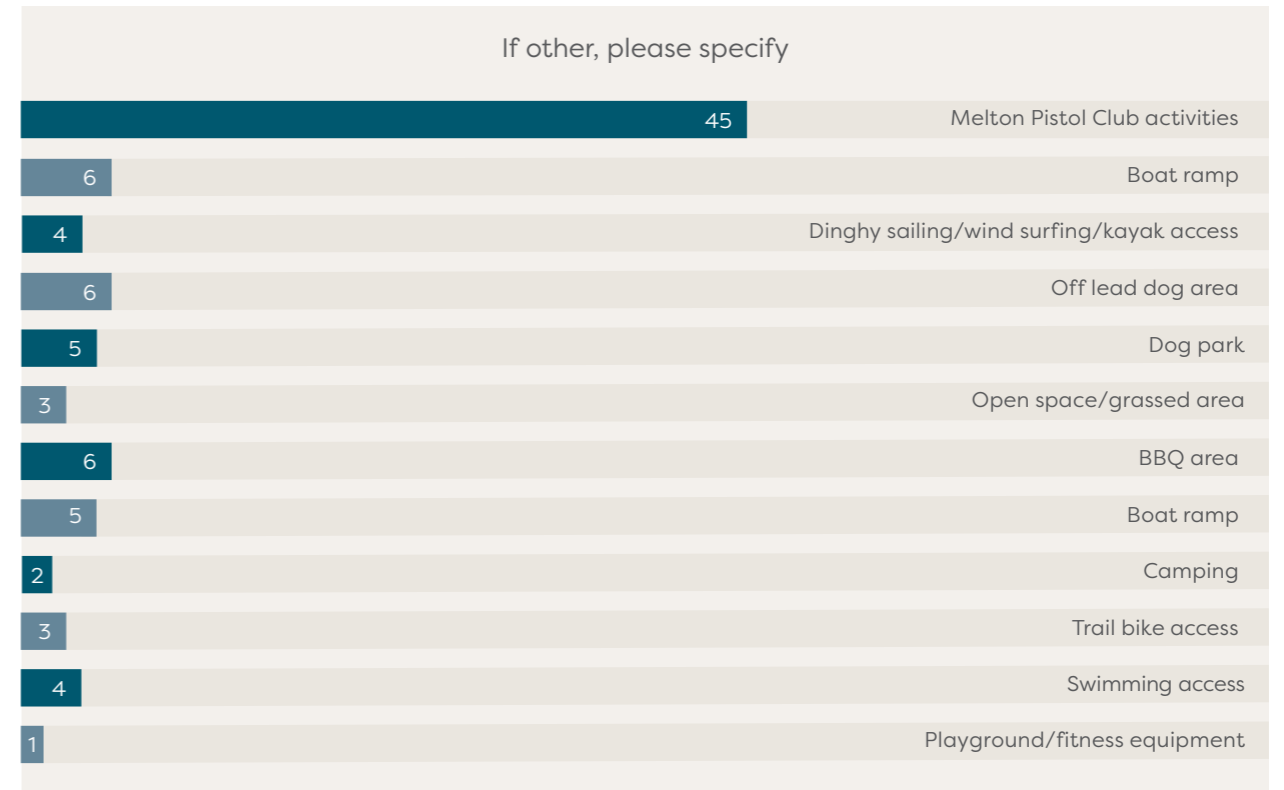
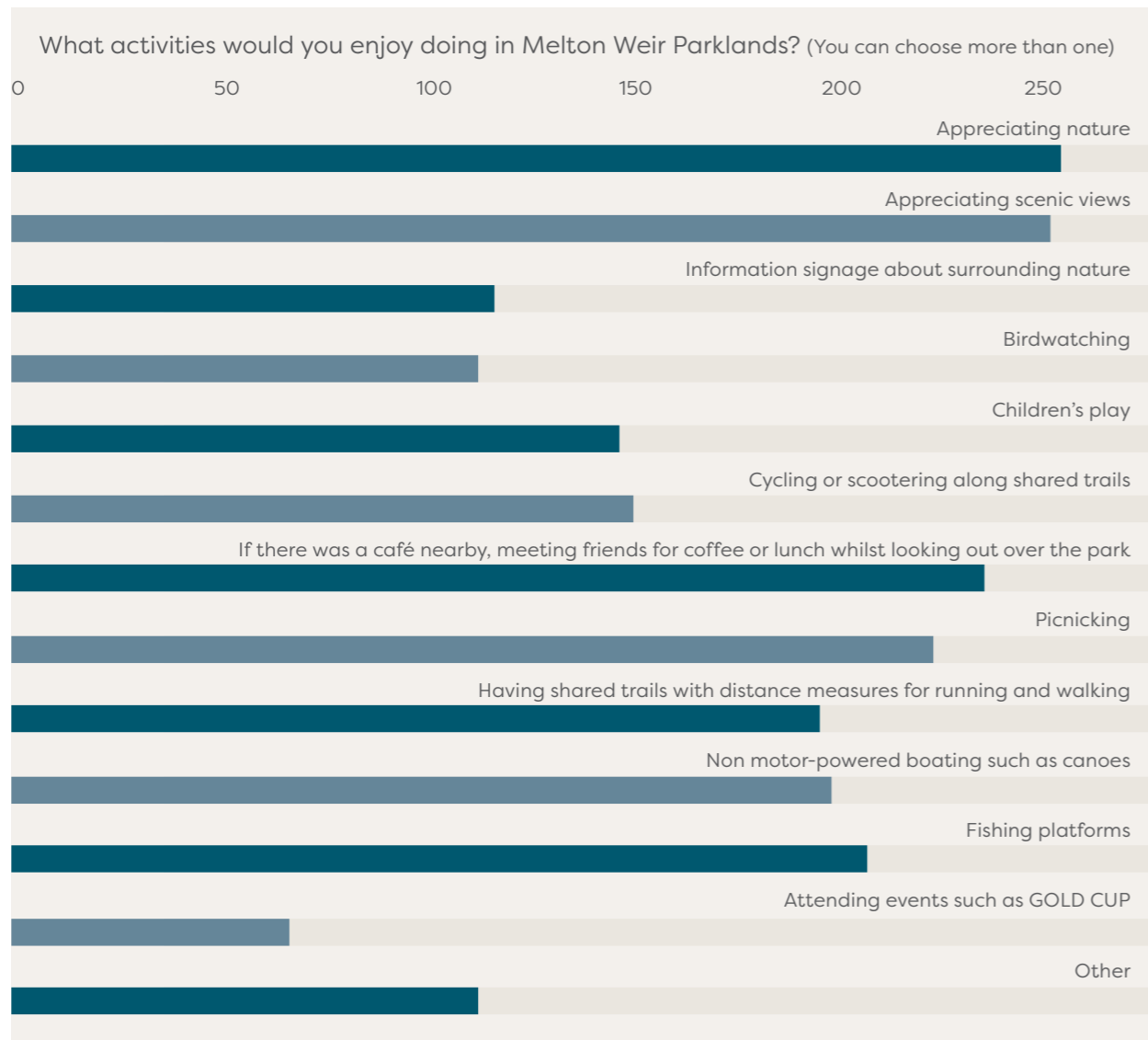
● Yes 11%
● No 43%
● No, but I would like to know more 46%

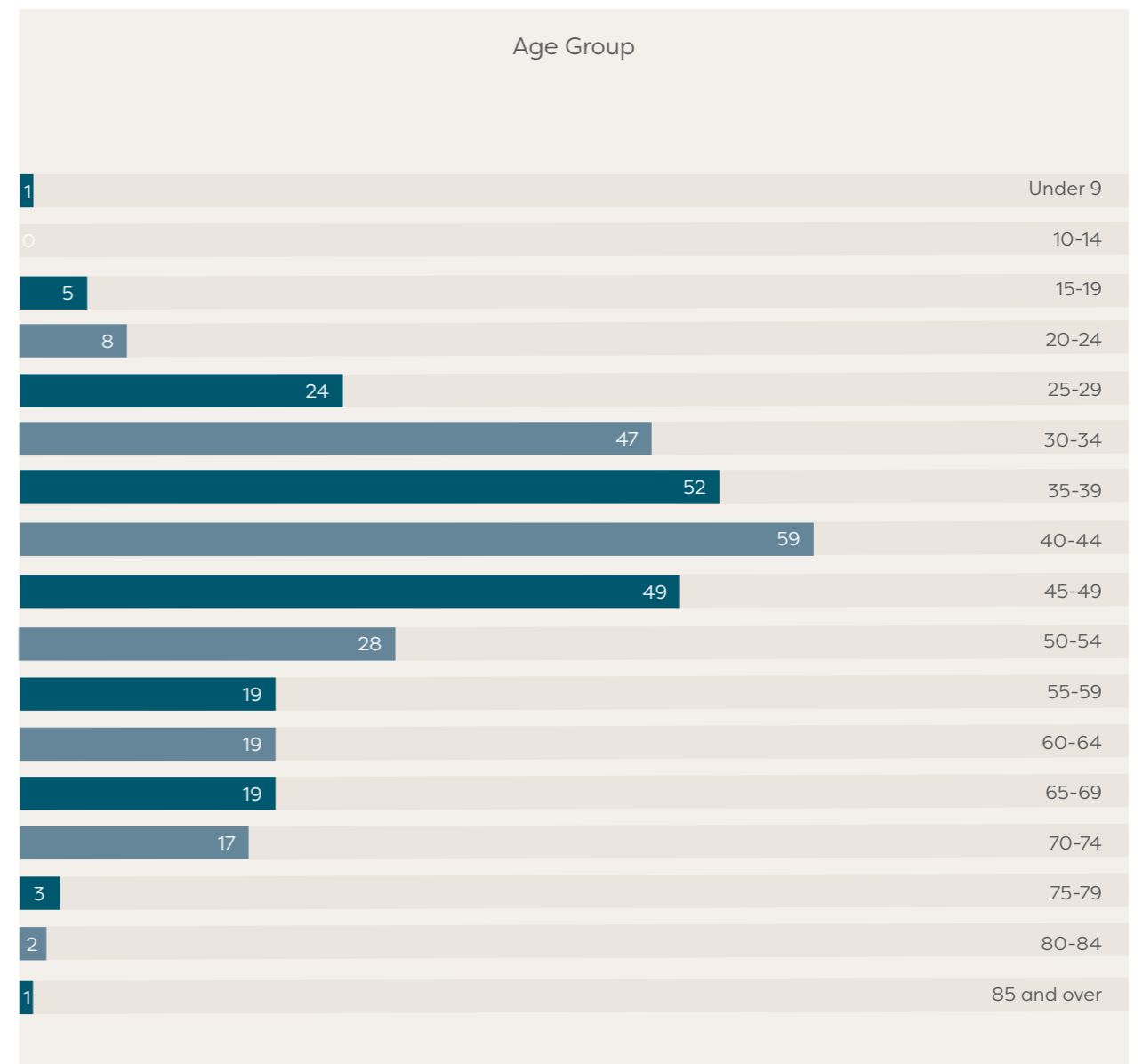
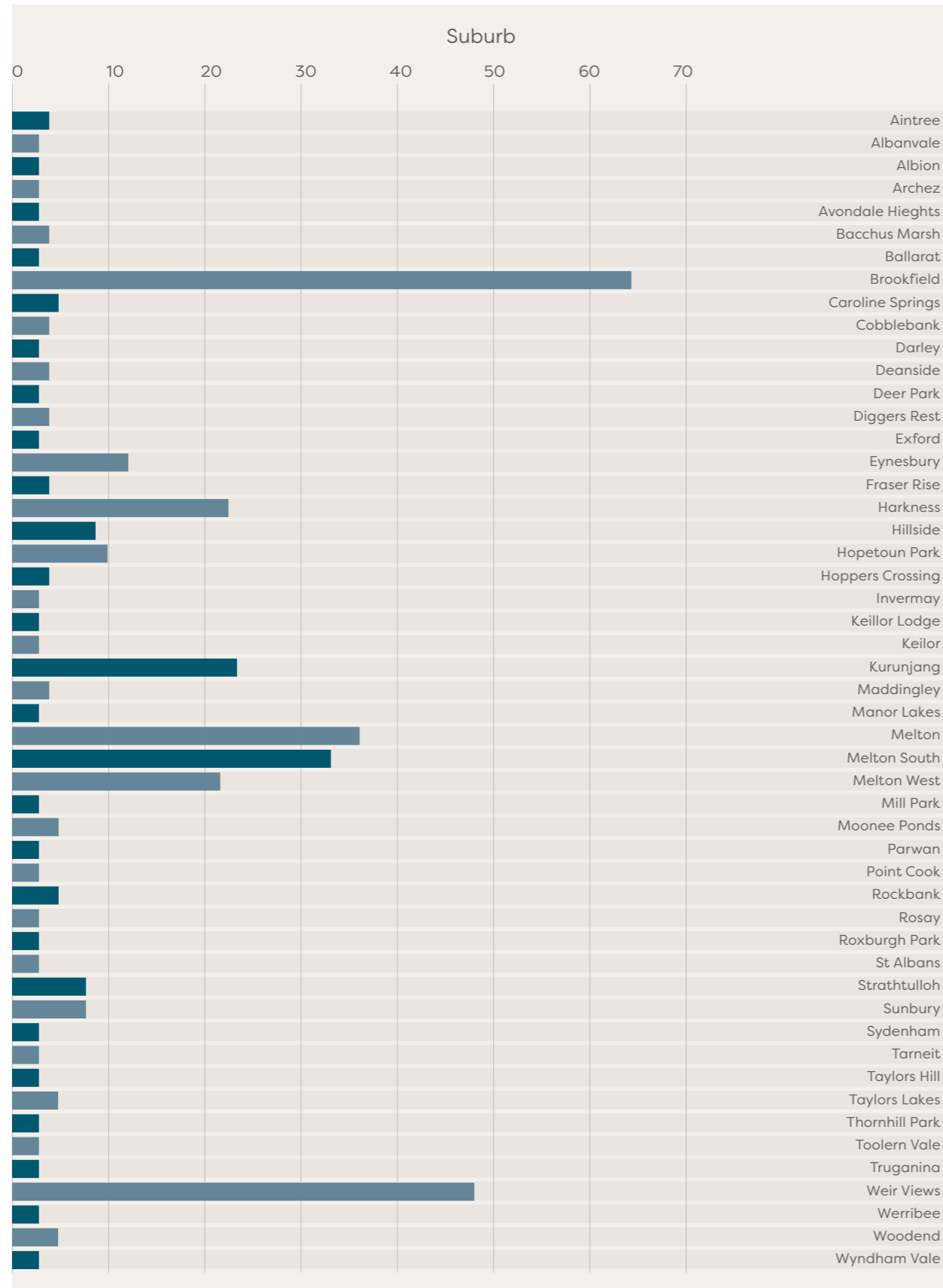
The Melton Reservoir is a boundary between the Wurundjeri Woiwurrung people to the east, and the Wadawurrung people to the west. How would you like learn to learn more about Wurundjeri Woiwurrung and Wadawurrung cultural values in the parklands?



Which areas do you visit? (You can choose more than one)







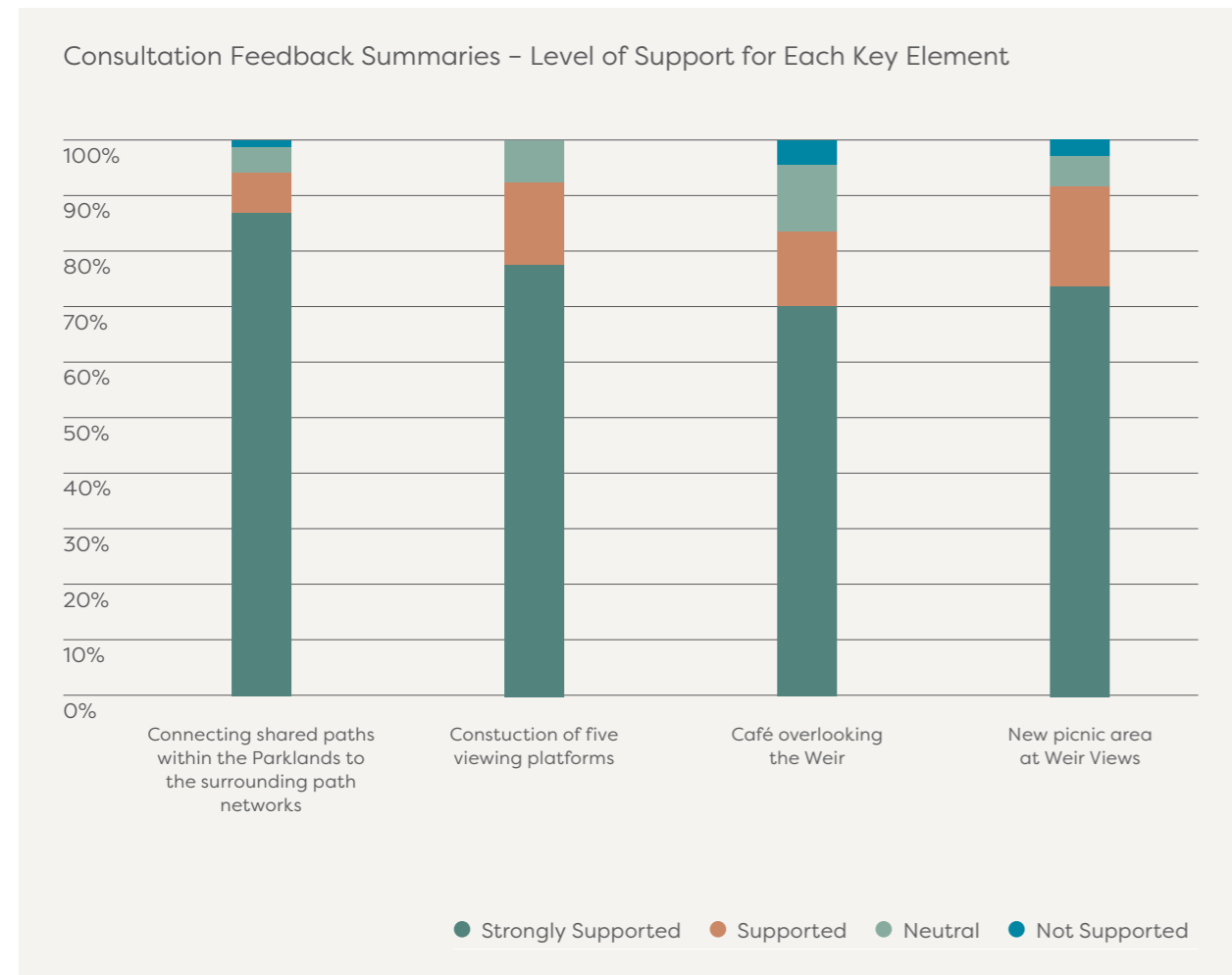
Appendix C

Community Feedback Summary

Consultation Activities

Community consultation for the Draft Melton Weir Parkland Strategy closed in early May 2024. Activities included an online survey and mail out to local residents. A significant amount of feedback was received, with around 100 responses in total.

Since May 2024, our consultants have been reviewing and summarising the findings of this feedback along with the comments received from Councillors' and internal stakeholders. A summary document is provided below. This summary will be used to guide the strategy.





**Melton Civic
Centre**

232 High Street
Melton
T 9747 7200

**Melton Library
and Learning Hub**

31 McKenzie Street Melton
T 9747 7200

**Caroline Springs Library
and Learning Hub**

193 Caroline Springs Boulevard
Caroline Springs
T 9747 7200

melton.vic.gov.au

