

**MELTON CITY
COUNCIL**

**ADVOCACY
PRIORITIES**



The new Melton Hospital

The new Melton Hospital is an intergenerational project that will be the catalyst for a range of social, economic and health benefits that will help transform Melbourne's outer west.

It is the biggest social infrastructure project in Melbourne's outer west in decades, but it can't happen without partnerships.

We appreciate that the Victorian Government has committed \$900 million to \$1 billion to construct the new Melton Hospital in Cobblebank.

The hospital will:

- Have more than 274 beds
- Include a 24-hour emergency department and intensive care unit
- Treat more than 130,000 patients every year and see almost 60,000 people in the emergency department
- Create 700 direct jobs and 1,700 indirect jobs during construction and 3,975 direct jobs in its first full year of operations
- Be a catalyst to attract investment to create 22,000 jobs in Cobblebank.

That is just the start of what this project will deliver to residents in Australia's fastest growing area and across western Melbourne.

The new Melton hospital will be more than just bricks and mortar.

The hospital will stimulate and drive additional infrastructure and services in Cobblebank and surrounding areas across a diverse range of industries including education, retail and allied health services.

Together with a new TAFE and secondary schools, the hospital will turn the Cobblebank Metropolitan Activity Centre into a major hub that is a gateway for healthcare, education, training and job creation in the outer west.

The Cobblebank Metropolitan Activity Centre will drive innovation, attract investment and connect the community.

We welcome the start of construction scheduled for 2024 and look forward to the new hospital being operational in 2029 and the legacy it will leave for future generations.

➔ For more information visit: vhba.vic.gov.au/health/hospitals/new-melton-hospital



Artist impression



ACKNOWLEDGMENT OF COUNTRY

Melton City Council acknowledges Aboriginal and/or Torres Strait Islander peoples living and working in the City of Melton. Council recognises the people of the Kulin Nations as the original custodians of the land now known as the City of Melton. On behalf of the municipality, Council pays respect to their Elders, past, present and future.

PROSPEROUS
CONNECTED
HEALTHY
SMART
SUSTAINABLE

→ JOBS AND SKILLS

→ TRANSPORT

→ HEALTH AND WELLBEING

→ EDUCATION

→ SUSTAINABILITY

The City of Melton — Australia's fastest growing municipality

In the year to 30 June 2022 our population grew by 11,642 people, or 6.42 per cent. Every week 76 babies are born and 72 families move in to our City.

We are the fastest growing municipality in Australia – and that growth is not slowing down. Over the next 30 years, the City of Melton’s population will grow to nearly 500,000 people.

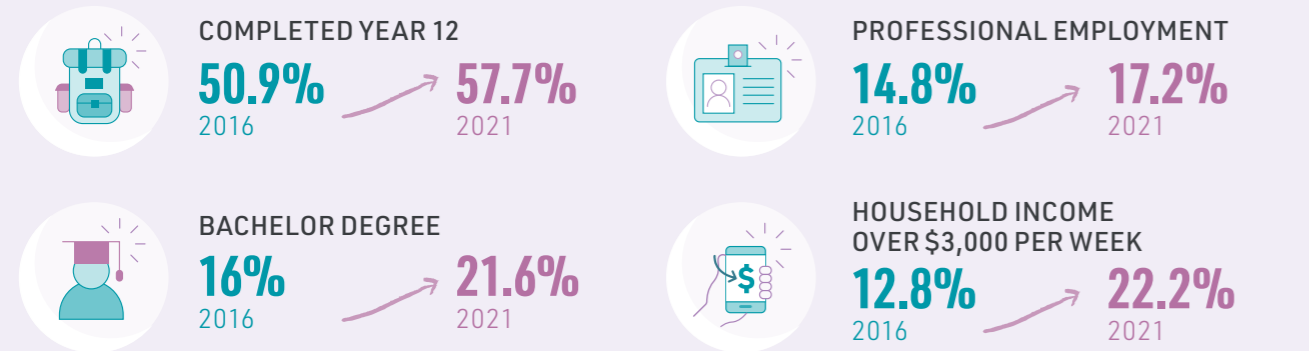
Growth of this scale and speed presents a variety of challenges as well as unrivalled opportunities to drive and shape a thriving community that can deliver benefits far beyond our City’s boundaries.

Our community is ambitious, young and diverse. Residents are becoming prosperous and bold in their ambitions for themselves and future generations.

We have listened to our community and represent their ambitions for access to jobs, education, health, transport and sustainability. Considered planning and strong, strategic partnerships guide our advocacy priorities.

We call on all levels of government to work in partnership to invest in intergenerational infrastructure and services that will improve economic prosperity and transform lives.

OUR COMMUNITY IS CHANGING



Our goal is a prosperous, connected, healthy, smart and sustainable community. We have identified five advocacy priorities to deliver this.

JOBS AND SKILLS



Jobs and training close to home

Investment in infrastructure and job creation will create a **prosperous** economy with growing productivity, participation and community wellbeing.

Council and Wellbeing Plan Theme 4 - A city rich in local employment and education opportunities.

↓
PROSPEROUS

TRANSPORT



Accessible, net zero transport

Transport infrastructure will create a **connected** community with access to employment, education and services.

Council and Wellbeing Plan Theme 3 - A fast growing, innovative and well-planned city.

↓
CONNECTED

HEALTH AND WELLBEING



Active, healthy, socially connected

The new Melton Hospital and allied health services, more open and recreation spaces and affordable housing will improve community **health** and wellbeing.

Council and Wellbeing Plan Theme 1 - A city that promotes positive health and wellbeing outcomes.

↓
HEALTHY

EDUCATION



Everyone reaching their full potential

Investment in state-of-the-art education from early years to tertiary will deliver a **smart** community that is workforce ready.

Council and Wellbeing Plan Theme 4 - A city rich in local employment and education opportunities.

↓
SMART

SUSTAINABILITY



A green, net zero community

Protecting our natural environment, managing waste, growing a greener canopy and reducing energy use will deliver a **sustainable** city.

Council and Wellbeing Plan Theme 2 - A vibrant and healthy natural and built environment.

↓
SUSTAINABLE

COMMUNITY PROFILE



205,867
RESIDENTS
IN 2023

33
MEDIAN AGE
(VICTORIA 37)



54,907 TOTAL
HOUSEHOLDS

3.1
AVERAGE HOUSEHOLD
SIZE (NO. OF PERSONS)

6,066
NEW DWELLING
APPROVALS
IN 2022

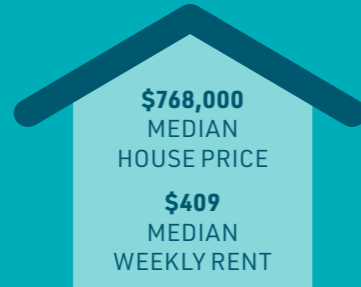
NEW DWELLING
APPROVALS
IN 2022



56.2%
COUPLES
WITH CHILDREN



25.6%
COUPLES
WITHOUT CHILDREN



\$768,000
MEDIAN
HOUSE PRICE
\$409
MEDIAN
WEEKLY RENT

2,128
FIRST NATIONS POPULATION
A 64.5% INCREASE FROM 2016.
MAKING UP 1.2% OF THE
POPULATION, HIGHER THAN
THE GREATER MELBOURNE
AVERAGE OF 0.7%

CULTURAL DIVERSITY



63,852
Residents born overseas
35.7 per cent



Top five
Countries by birthplace:
India, Philippines,
New Zealand, UK
and Vietnam



69,722
Speaks a language
other than English
at home 39 per cent



Languages
The most common
languages spoken at
home are Punjabi,
Filipino and Vietnamese

ECONOMIC PROFILE

GROSS REGIONAL PRODUCT IN 2022

\$6.66 BILLION



120,689
WORKING AGE
POPULATION IN 2021
(AGED 15-64 YEARS)



WORKING AGE
POPULATION IN 2021
(AGED 15-64 YEARS)



87,084
THE SIZE OF
LABOUR FORCE
IN 2021



AN INCREASE OF
22,114 SINCE THE
2016 CENSUS



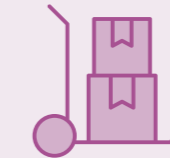
6,133
NEW
LOCAL JOBS
IN 2021



A 15.95% INCREASE
FROM THE YEAR
BEFORE FOR 44,591
JOBS IN 2022

15,398 businesses

in 2022 with the top three in construction, transport and warehousing, and professional and technical services



14.7%
INCREASE FROM
2021, WITH THE CITY
OF MELTON NOW
1.33% OF VICTORIA'S
TOTAL GDP

INCREASE FROM
2021, WITH THE CITY
OF MELTON NOW
1.33% OF VICTORIA'S
TOTAL GDP

YOUTH
DISENGAGEMENT
(AGED 15-24 NOT
EMPLOYED OR IN
EDUCATION) 2021

9.6%
MELTON
7.5%
VICTORIAN (AVERAGE)

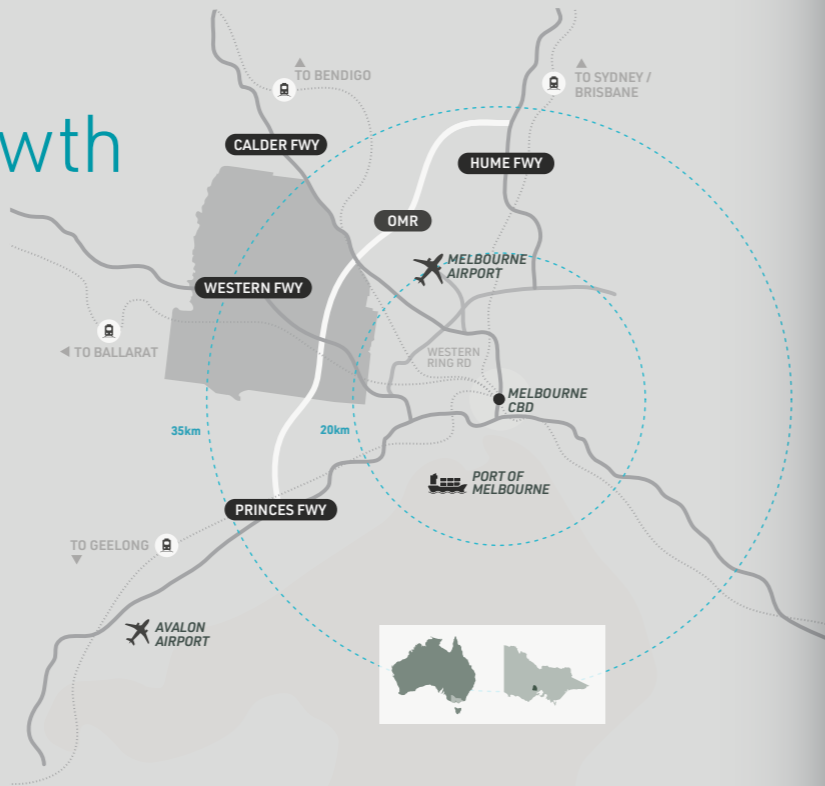
UNEMPLOYMENT
RATE
MARCH 2023

5.7%
MELTON

3.9%
GREATER
MELBOURNE
(AVERAGE)

Residential and employment growth

The City of Melton is located 19 kilometres northwest of Melbourne's CBD and covers an area of 527.3 square kilometres. The city features opportunities for business and residential development and is strategically situated with connections to major ports and national freeways. The City of Melton is the ideal location for a broad mix of residential development, employment, commercial and recreational investment.



NUMBER OF RESIDENTS



NUMBER OF DWELLINGS



POPULATION PROJECTIONS FOR 2041

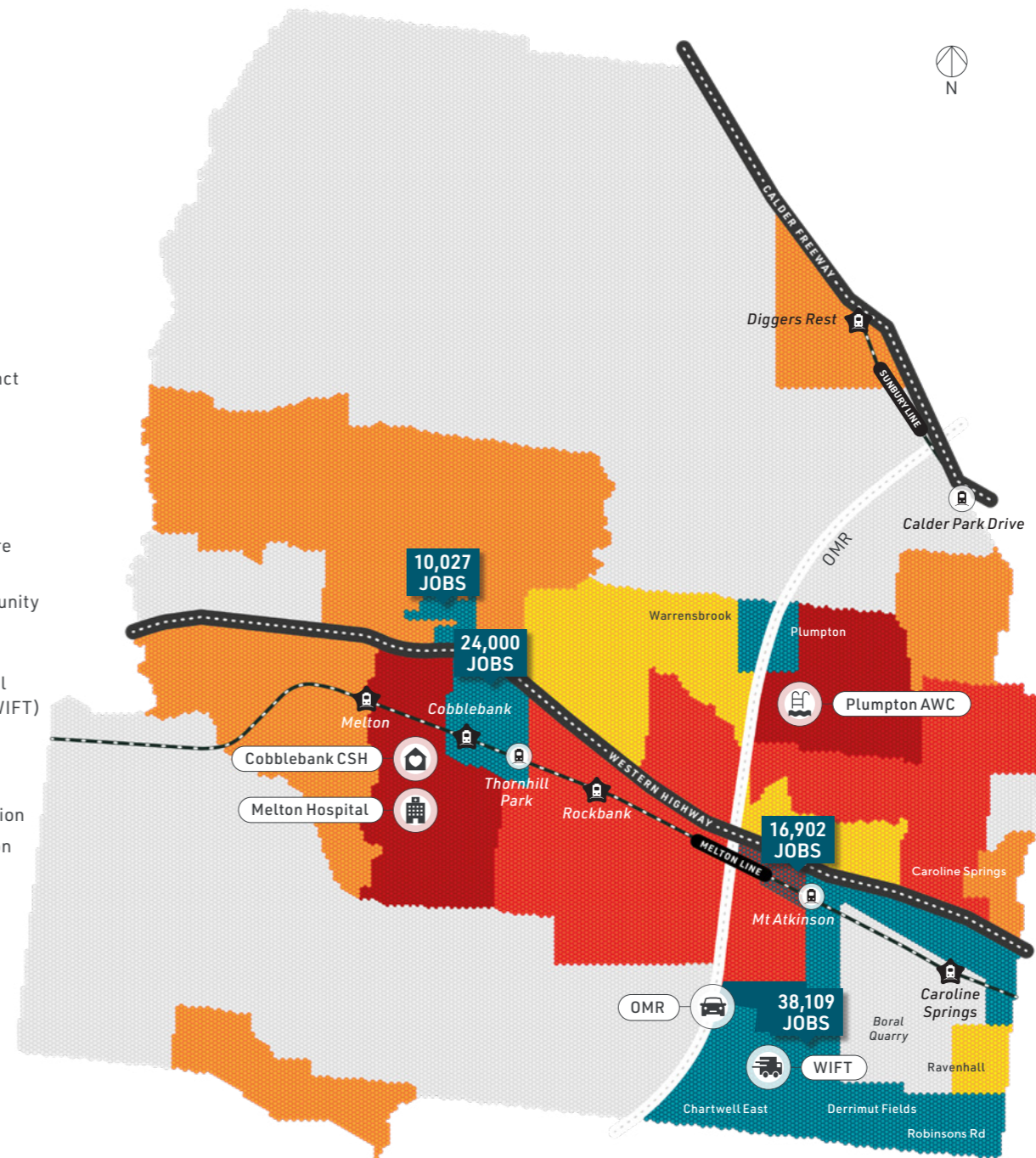
- 6,000 to 10,000
- 10,000 to 16,000
- 16,000 to 25,000
- 25,000 to 37,000

EMPLOYMENT PROJECTIONS FOR 2041

- Employment Precinct

PRIORITY PROJECTS

- Melton Hospital
- Plumpton Aquatic and Wellness Centre (Plumpton AWC)
- Cobblebank Community Services Hub (Cobblebank CSH)
- Western Intermodal Freight Terminal (WIFT)
- Outer Metropolitan Ring (OMR)
- Proposed train station
- Existing train station



- ↓ SUSTAINABILITY
- ↓ EDUCATION
- ↓ HEALTH AND WELLBEING
- ↓ TRANSPORT
- ↓ JOBS AND SKILLS

Commitments

Our community welcomes recent commitments to invest in our area:

\$900m - \$1 billion

from the Victorian Government for the new Melton Hospital to open in 2029.



\$55 million

from the Victorian Government for the new TAFE in Cobblebank by 2028.



\$1.66 billion

The Australian Government has committed \$740 million for the Western Intermodal Freight Terminal and \$920 million for Outer Metropolitan Ring Rail South projects.



\$650 million

from the Victorian Government to upgrade the Melton rail line to accommodate nine-carriage VLocity trains by 2028.



\$14.9 million

from the Victorian Government for Melton Highway duplication from The Regency to Crown Drive.



\$20 million

Joint Australian and Victorian Government funding for the development of the business case for the Western Highway upgrade between Caroline Springs and Melton.



Seven level crossings and one new station

Victorian Government investment in a new Melton train station and the removal of the level crossings at Calder Park Drive, Holden Road, Old Calder Highway, Coburns, Exford, Ferris and Hopkins Roads.



New/upgraded

Victorian Government investment in new and upgraded primary and secondary schools to serve our growing population.



Funding For Growth

We seek continued investments to support our rapid growth.



Growth council areas in Melbourne assist the Australian and Victorian Governments to deliver on their ambitious housing and migration policies with the supply of lower cost homes.

VICTORIAN GOVERNMENT PROGRAMS

Growing Suburbs Fund

Since 2015, Melton City Council has received \$47 million in funding from the Growing Suburbs Fund for 42 community projects worth \$152 million including community centres, parks, playgrounds, leisure centres and botanic trails. This funding enables Council to deliver critical social and community infrastructure sooner. Melton City Council is seeking future funding certainty for the Growing Suburbs Fund and restoring the funding pool to \$50 million per annum.

Growth Area Infrastructure Contributions Fund

The Victorian Government has been collecting Growth Area Infrastructure Contributions (GAIC) from developers for over 12 years. These contributions are intended to be invested in the area where they are collected to ensure new communities have essential infrastructure from the moment the first residents move in.

Developers in the City of Melton have contributed \$318.2 million since 2010, with \$127 million of this committed to local projects. This has left a short fall of \$191 million yet to be allocated. The City of Melton represents the highest GAIC collected and the highest investment shortfall from any council area. Melton City Council is seeking a clear plan as to how the \$191 million shortfall is going to be invested in our community.

AUSTRALIAN GOVERNMENT PROGRAMS

Thriving Suburbs Program

We welcome the \$200 million Thriving Suburbs Program which will fund capital works for community and economic infrastructure that enhances liveability and prosperity in urban communities. We look to this program to fill gaps in services and infrastructure in growing communities.

Urban Precinct and Partnerships Program

The \$150 million Urban Precinct and Partnerships Program will fund planning, design and business cases for investment-ready proposals in precincts and the delivery of larger scale precinct projects. We look to this program to help plan and deliver critical infrastructure in precincts such as Cobblebank MAC and in the development of the employment precincts.



JOB AND SKILLS: CLOSE TO HOME

"Access to local employment opportunities for all levels of ambitions and careers."

**MALE 65 YEARS+
MELTON RESIDENT**



INVESTMENT ASKS

- Fast-track the development of employment precinct plans
- Infrastructure to support employment precincts and attract commercial investment
- TAFE education for more than just construction
- A University for Cobblebank
- Build the Western Intermodal Freight Terminal
- Build the Outer Metropolitan Ring (Road and Rail)

Local job creation is our number one priority – we need more opportunities for residents to work in quality, diverse roles close to home.

Rapid population growth has not been matched by local job growth, resulting in 73 per cent of our local workforce leaving the municipality daily to access employment.

There are 0.36 jobs per member of the labour force, compared to the growth area average of 0.6.

We have a plan to attract investment and create more local jobs. The City of Melton's Investment Attraction Strategy seeks to deliver 100,000 new local jobs and return \$19 billion to the Victorian economy annually.

Local jobs will reduce commuter times, ease pressure on the public transport network, improve traffic flow by taking cars off roads, increase prosperity and help our transition to a net zero economy.



The City of Melton is one of the leading areas of industrial growth and investment in Victoria. Investment in our employment precincts will deliver 100,000 jobs and contribute \$19B to the economy.



EMPLOYMENT AND INDUSTRIAL PRECINCTS

The City of Melton boasts enviable proximity to major logistics infrastructure such as roads, rail, seaports and airports that link business to national and international markets.

Melton City Council is responding to the challenge of ensuring the city's population growth is matched by local employment and economic growth.

To meet this challenge, we will facilitate the institutional, investment, enterprise and workforce conditions to support a larger, more diverse and dynamic local economy with abundant high-value jobs.

As we approach 500,000 residents by 2051, our community's work-life balance, environmental performance, social inclusiveness and resilience will depend on the growth, flexibility and dynamism of our local economy.



Supply chain and logistics hubs will create more than 39,000 new jobs over the next 30 years within sites such as the Western Intermodal Freight Terminal Precinct, Melbourne Business Park, Dexus 3023 Horizon Estate and the Western State Significant Industrial Precinct.

Global giants including Nike, Amazon, Elders, Lululemon, Electrolux, Myer, Hello Fresh and Metcash have already capitalised on the opportunities the City of Melton presents. More global brands are looking to set up a home in our community.

We seek the commitments from government to fastrack the development of employment precincts to create opportunity, and certainty for investment attraction.

COBBLEBANK METROPOLITAN ACTIVITY CENTRE

The strategic vision for the Cobblebank Metropolitan Activity Centre includes new health, justice, education and civic precincts. Work will start on the Melton Hospital in 2024 opening in 2029 and land has been acquired for a new private hospital.

St Francis Catholic Secondary College will be joined by a new government secondary school and \$55 million has been allocated to build the new Melton TAFE, set to open in 2028. The Victorian Government has committed to remove the level crossing which sits at the heart of the activity centre on Ferris Road by 2028.

Council has committed to build the new Cobblebank Community Services Hub to house the allied health and community services our community needs.



This important facility will be sited next to the already established business incubator, Western BACE and the Cobblebank train station.



Melton Hospital will be the first hospital to be powered by 100 per cent renewable energy and includes an education and training hub for doctors and nurses.

SKILLS

Our booming economy will need tens of thousands of skilled workers in the coming years. New supply chain and logistics hubs will create 39,000 jobs over the next 30 years. Construction of 96,000 new dwellings and \$1 billion of community infrastructure over the next 30 years will create an estimated 300,000 jobs.

At least 1,370 kindergarten teachers will be needed to support the 36,060 children aged under five in 2051 and new schools opening now and into the future will need skilled and qualified educators.



JOBS AND SKILLS



TRANSPORT



HEALTH AND WELLBEING



EDUCATION



SUSTAINABILITY

TAFE

We welcome the Victorian Government investment of \$55 million to construct a new TAFE in Cobblebank by 2028 to target the construction trades industries.

The City of Melton has seen a decline in TAFE enrolments between 2019 and 2021. Even with rapid population growth there were 4,340 less TAFE students in 2021 compared to 2019. Our area also has a higher level of youth disengagement compared to the Greater Melbourne average.

Whilst we welcome the new TAFE, we are seeking an increased scope of training to address workforce shortages and deliver the skills required for tomorrow's workforce including logistics, health, education and community services.



With workplace shortages across the municipality and high levels of disengaged youth, we need to start training the workforce of tomorrow – today.

UNIVERSITY

As part of a broader health precinct in Cobblebank, a partnership with hospitals and research organisations and a university provider could deliver tertiary education.

The Melton Hospital will be a tertiary hospital with provision for training and we are seeking a commitment for funding to prepare a future workforce for the hospital.

The new university would be aligned with the hospital to train doctors, specialists, nurses, midwifery, and allied health practitioners. The university will provide tertiary education to the north and west outer metropolitan areas and regional centres. The university could also deliver education needs in engineering and science.

We seek Australian and Victorian Government support to plan for and establish a University campus in the Cobblebank precinct.



WESTERN INTERMODAL FREIGHT TERMINAL

Melbourne's west is home to 50 per cent of existing interstate freight rail customers. The Western Intermodal Freight Terminal (WIFT) is located in the Western State Significant Industrial Precinct, Victoria's largest. The WIFT is designed to take rail freight from the Port of Melbourne to logistics hubs in Melbourne's west and interstate, servicing Australia's east-west corridor. This gets trucks off roads increasing productivity and safety, whilst reducing congestion and emissions.

The WIFT is supported by the supply chain and logistics industry as a critical investment need. It will increase productivity, create approximately 1,360 jobs during construction, 2,000 ongoing jobs and attract commercial investment to create 39,000 jobs over the next 30 years.

OUTER METROPOLITAN RING

The Outer Metropolitan Ring (OMR) is a 70-kilometre reservation from Little River in Melbourne's south-west to Kalkallo in the north. It has provision for freight and passenger rail tracks and six road lanes.

The OMR will connect the Hume Freeway, Calder Highway, Western Highway, and Princess Freeway to freight transport hubs and employment precincts such as Melbourne Airport, Port of Melbourne and regional centres.



Freight rail will connect the Commonwealth's Inland Rail Project in Beveridge to the WIFT and south-west rail and take trucks off our roads. With the Western Ring Road at capacity, the OMR is critical to unlocking employment and investment in the outer west and connecting growth residential areas.



The Australian Government has committed \$740 million for the WIFT and \$920 million for OMR Rail South projects. Council seeks the commitment from government to prioritise this investment and deliver the WIFT and OMR.



JOBS AND SKILLS



TRANSPORT



HEALTH AND WELLBEING



EDUCATION



SUSTAINABILITY



TRANSPORT: ACCESSIBLE, MOVING TO NET ZERO TRANSPORT

"There needs to be forward planning to ensure the infrastructure is delivered in line with residential and industrial growth."

**FEMALE 35 TO 44 YEARS
BURNSIDE RESIDENT**



INVESTMENT ASKS

- ➔ Upgrade the Western Highway, Melton Highway, Hopkins and Christies Roads, and the Robinsons Road, Westwood Drive and Calder Park Drive corridor
- ➔ Electrification and duplication of the Melton rail line and new stations at Thornhill Park, Mt Atkinson and Calder Park
- ➔ Reconfigured bus network with an extra \$10 million annual operational investment
- ➔ Connect our active transport network

A poor transport network is a barrier for job seekers and the existing workforce to find and maintain employment, and makes it difficult to access education and services. It can create social and economic disadvantage for whole communities.

Investing in our transport network will better connect our community, attract commercial investment, increase productivity, build long term prosperity, help us meet our sustainability goals and create active ways for our community to move around.



A modern and sustainable transport network will boost productivity, create opportunity, protect our environment and enhance wellbeing and health outcomes.

ROAD NETWORK

Our arterial road corridors are critical connections between our communities, activity centres and employment precincts.

These roads are not suitable for the existing high volume of traffic. They are of a rural standard with unsealed shoulders, open drains and non-existent bike and pedestrian facilities. With rapid employment and residential growth, roads that are already unsuitable will only deteriorate further.

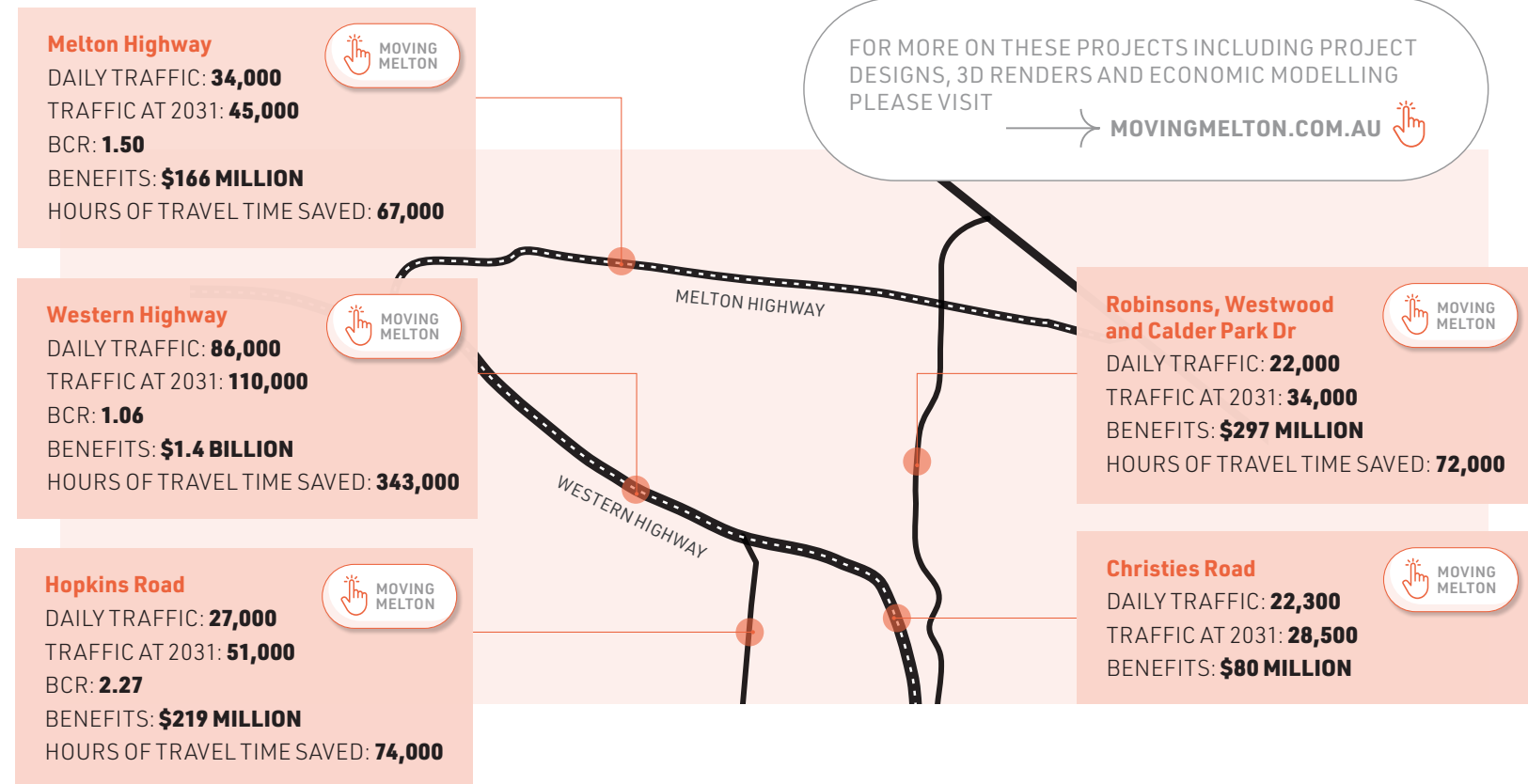
Fast-tracking infrastructure projects including the Western Highway, Melton Highway, Hopkins and Christies Roads,

and the Robinsons Road, Westwood Drive and Calder Park Drive corridor is urgently needed to service key employment precincts including Horizon 3023, Melbourne Business Park and Cobblebank MAC.

Independent cost benefit analysis by Clarity Consult demonstrates that these projects stack up.

Delivering them will attract increased commercial investment, support 73,000 future jobs and provide a range of economic benefits.

FOR MORE ON THESE PROJECTS INCLUDING PROJECT DESIGNS, 3D RENDERS AND ECONOMIC MODELLING PLEASE VISIT MOVINGMELTON.COM.AU



BUS NETWORK

The City of Melton needs a more frequent, direct and better-connected bus network. More than 40,000 people living in new suburbs have no bus services. This will get much worse with 13,000 existing lots and 8,600 new lots being created.

Where there are existing bus services, peak frequency is more than 30 minutes and services are indirect, with travel time often close to twice that of travelling by car.

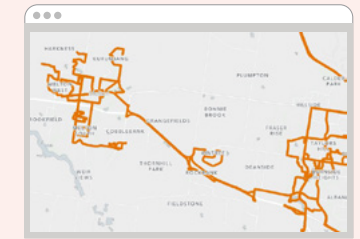
There are approximately 300,000 transport trips per day originating from the Melton LGA, with approximately 3,800 trips by bus - less than 1.3 percent mode share.

We are calling for a review of our bus network to refine existing routes to create more frequent and direct routes.

Our modelling has found that a no cost review of the bus services could double the frequency of buses, resulting in a 100 per cent increase in services for existing routes and create new routes that would connect areas not serviced by bus.

FOR MORE ON THE NETWORK MODELLING PLEASE VISIT MOVINGMELTON.COM.AU/BUSNETWORK

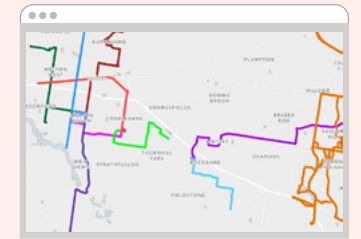
EXISTING ROUTES ▼



- 40,000 people have no access to bus services
- Many existing services have seen declining patronage

WITHIN 400M OF A BUS STOP (2041)
→ 146,100 people

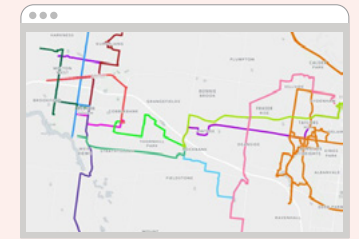
NO COST MELTON RECONFIGURATION ▼



- Add new routes to suburbs not serviced including Mount Atkinson, Deanside, Thornhill Park, Weir Views and Fraser Rise
- Buses to push further to reach areas such as Brookfield, Harkness, Kurunjang, Rockbank and Aintree

WITHIN 400M OF A BUS STOP (2041)
→ 179,400 people

PROPOSED NEW ROUTES AT \$10 MILLION ▼



- Connecting to neighbouring areas such as Werribee and Hoppers Crossing, providing critical access to jobs

WITHIN 400M OF A BUS STOP (2041)
→ 245,200 people

METROPOLITAN TRAIN SERVICES FOR THE WEST



The growing suburbs along the Melton rail line are serviced by diesel trains from the overcrowded regional Ballarat services.

Extension of the electrified rail network from Sunshine to Melton and separation from the Ballarat line would triple the passenger capacity and improve frequency.

Metropolitan trains can carry up to 1,500 passengers at a time and can operate at increased frequency.

Over the next 30 years 183,500 people will move into the railway line corridor, and six new suburbs that are directly aligned to the rail line will bring 65,900 new dwellings. The existing rail network will not cope with this increase in population.

Independent analysis by Clarity Consult found that electrification and separation of the Melton Line would see a Present Value of Benefits of \$910 million over 30 years.

We are also calling for new stations at Mt Atkinson, Thornhill Park and Calder Park.

The upgrade of the rail network and construction of new stations would divert traffic from surrounding roads, reducing congestion and will embed more affordable, healthy and sustainable transport practices in our community.

FOR MORE ON THE NETWORK MODELLING PLEASE VISIT

→ MOVINGMELTON.COM.AU/RAIL

ELECTRIFICATION OF MELTON TO SUNSHINE RAIL LINE



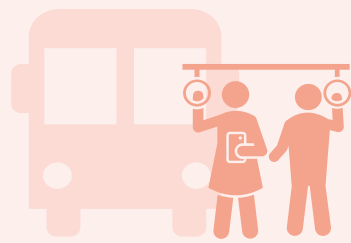
\$910 million
OF PRESENT VALUE OF
BENEFITS OVER 30 YEARS



12,000 less
CAR TRIPS ON
NETWORK DAILY



27% or 15,000+
MORE LOCAL TRIPS ON
PUBLIC TRANSPORT



36.1% or 6,363
MORE BUS BOARDINGS
IN THE CITY OF MELTON

ACTIVE TRANSPORT: AFFORDABLE, HEALTHY AND SOCIALLY CONNECTED WAYS OF TRAVELLING

The City of Melton has some of the poorest active transport connections of any municipality. Many new estates have no active transport connections and there are large gaps in the network.

Research shows that a safe active transport network is the key to attracting people to activities such as walking or cycling as a way to get around.

Investing in active transport will reduce the number of vehicles on our roads and will help our community adopt more affordable, healthy and sustainable travel.

We have identified 90 km of missing paths to be prioritised by Council, 120 km of shared path network on major roads to be delivered by the Victorian Government and 240 km of developer delivered paths managed through permit applications.



ACTIVE TRANSPORT PLAN AND PRIORITY ROUTES



New active transport corridors will:

- connect residents from Melton to Caroline Springs and onto the CBD
- help new communities in Wier Views, Frasers Rise, Thornhill Park, Mt Atkinson, Diggers Rest and Aintree access established centres

FOR MORE INFORMATION PLEASE VISIT

→ MOVINGMELTON.COM.AU/ACTIVE



HEALTH AND WELLBEING: ACTIVE, HEALTHY, SOCIALY CONNECTED COMMUNITY

"More health services – the current wait for OT, speech and psychology at a children's services is more than 9 months."

FEMALE 35 TO 44 YEARS
KURUNJANG RESIDENT



INVESTMENT ASKS

- ➔ Incentives for Maternal and Child Health Nurses
- ➔ A feasibility study for an Aboriginal Community Services Hub
- ➔ Certainty of ongoing funding for Babaneek Booboo Aboriginal service
- ➔ Affordable and social housing
- ➔ Activating sporting and outdoor spaces
- ➔ Fund the Plumpton Aquatic and Wellness Centre
- ➔ Fund the Cobblebank Community Services Hub



Being active, healthy and socially connected has come through as one of the most important things for our community.



The City of Melton has higher needs for community and allied health services. The North-Western Melbourne Primary Health Network has identified that the City of Melton has the:

- Highest rate of need across all determinants of health in the network which is generally associated with high levels of disadvantage, high acute service use and high rates of chronic disease
- Highest Emergency Department presentations for suicide or self-harm in 2019-20 and 2020-21 across the network
- Second highest prevalence of adult obesity and hypertension across the network.

In addition, our community is relatively sedentary when compared to the Victorian average:

- **30 per cent of adults are obese** compared to the Victorian average of 19.27 per cent
- **4.3 per cent of residents are sedentary** compared to the Victorian average of 2.5 per cent
- **29.4 per cent of residents record lower levels** of physical activity compared to the Victorian average of 27.2 per cent
- **Two in five people** do insufficient physical activity
- **The lowest participation** in sport in growth areas 8.3%

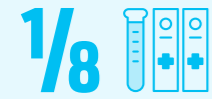
Compared to Greater Melbourne per 100,000 people, Melton LGA has approximately:



1/2
Half the number of doctors
(55 compared to 102)



1/2
Half the number of nurses
(35 compared to 68)



1/8
An eighth of the number of obstetricians and gynaecologists
(1.0 compared to 7.9)



1/2
Half the number of paediatricians
(2.3 compared to 5.1)



1/2
Half the number of chiropractors, physiotherapists and osteopaths
(39 compared to 76)



1/2
Half the number of occupational therapists
(30.9 compared to 70.2)



1/8
The number of antenatal, neonatal, postnatal and maternity nurses
(8.5 compared to 61.2)



1/2
The number of aged care nurses
(71.5 compared to 141.7)

MATERNAL & CHILD HEALTH – PREVENTATIVE HEALTH FROM BIRTH

Maternal and Child Health (MCH) is a key pillar of our preventative health system and the challenges of providing these services is left to Council.

Melton City Council operates 19 MCH centres with allocation for 28 qualified MCH nurses who, in the last financial year, saw 18,275 children, conducted 2,881 home visits and provided 1,109 parents referrals or other support.

Demand is growing with total infant records of 18,275 in 2023 compared to 17,212 in 2022 and 16,809 in 2021. We are also seeing more complex cases, with 5,488 children presenting with one or more identified risk factors compared to 3,021 children in 2021.

We plan to deliver all 'Key Age and Stage consultations' for children from birth to three-and-a-half years of age. However, with just 17.38 qualified MCH nurses, we can only offer one-on-one consultations to eight weeks.

Council is seeking support to provide incentives for MCH nurses to work in the outer growth areas, where demand is the greatest.



ABORIGINAL COMMUNITY SERVICES

City of Melton's Aboriginal and Torres Strait Islander population is proportionally higher than Greater Melbourne and growing, creating higher demand for services.

A range of complex and inter-related health, wellbeing, social, education and employment needs are present amongst the local First Nations population.

An **Aboriginal Community Services Hub** would help provide integrated responses to these needs. Having a space where various service providers can work collaboratively has been shown to create better outcomes for the community.

Council supports First Nations self-determination and is seeking Victorian Government support for a feasibility study for an Aboriginal Community Services Hub.



Babaneek Booboop

Driven by principles of self-determination and Aboriginal leadership, the Babaneek Booboop Early Years Project supports Aboriginal and Torres Strait Islander children and families.

The project's theory of change includes focusing on enhancing the cultural safety and responsiveness of service providers, along with the recruitment of skilled Aboriginal pathway workers to:

- Provide cultural safety and assist in service navigation between families and service providers
- Link pregnant women to antenatal care, maternity and breastfeeding support services
- Support children & families in attending Maternal and Child Health Key Ages and Stages consultations
- Link families to support services
- Assist parents/carers with enrolments and support for children to engage in playgroups, kindergarten and school
- Provide referral to a Koorie Engagement Support Officer
- Link children and families with local Aboriginal organisations and cultural events/activities.

The evaluation of the Babaneek Booboop project found positive outcomes of the programs. The data demonstrated a consistent increase in the number of families engaged with the services from 68.83 per cent in 2017 to 71.65 per cent in 2020/2021.

We ask for certainty of ongoing recurrent funding for this program that assists Aboriginal and Torres Strait Islander families to access vital education and health services.

YOUTH SERVICES

Melton City Council provides activities and support services for young people aged 12 to 25 who live, work, study or play in the City of Melton.

We are seeking sustainable longer-term funding for programs that include:

- Early intervention for homelessness and crime prevention
- Building the capacity of young people to prepare for and secure education, training and employment
- Providing support, accessibility, and service options in mental health & community well-being
- Targeted support for young people, aimed at ensuring they can access services when and where they need them
- Drop in programs in art, sports and social events.



AFFORDABLE AND SOCIAL HOUSING

People move to the City of Melton because the housing is considered affordable compared to other municipalities.

However, this 'affordability' does not factor in limited access to public transport, lower number of local jobs and cost of living pressures.

Households in the City of Melton are more likely to experience rental stress with 30.6 per cent of renters impacted, compared to the Victorian average of 27.2 per cent. The 2020 Health and Wellbeing Profile for the City of Melton stated 12.3 per cent of households experience mortgage stress, compared to the Victorian average of 10.2 per cent.

The City of Melton also has a lower-than-average provision of social housing (1.2 per cent of housing stock), compared to metropolitan Melbourne (2.6 per cent).

There is an urgent need for investment in social housing as we've seen a 70 per cent increase in homelessness between the 2016 and 2021 census.

Whilst Melton City Council owns and manages 15 properties as affordable housing, we welcome the Victorian Government's Housing Statement and the Australian Government's housing reform agenda to add social and affordable housing for the most vulnerable in the community.

We want to work in partnership with all levels of government to deliver new affordable and social housing in the City of Melton.



SPORTS AND RECREATION – FOR AN ACTIVE COMMUNITY

Our community wants to become more active and we know we need to increase physical activity as our city features poorly on health and wellbeing indicators. As a result, we need more active recreation.

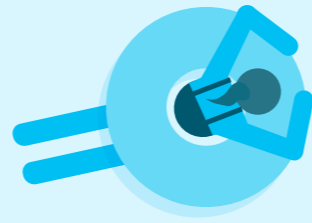
Our community values outdoor spaces, parks and gardens close to home. Increased density of housing, however, has resulted in less outdoor space per resident. We are looking for more investment in creating and upgrading local outdoor

spaces so that active lifestyles are embedded in our community. This includes investment in local parks, sporting facilities, green spaces and walking paths.

We are seeking additional investment from the Victorian Government's Local Sports Infrastructure Fund to build urgently needed facilities to cater for our rapidly growing population.



Critical health and community infrastructure



PLUMPTON AQUATIC AND WELLNESS CENTRE

The Plumpton Aquatic and Wellness Centre (PAWC) in Fraser Rise will be a six-star Green Star, district-level facility with a focus on wellbeing, accessibility and inclusion. It will be a destination for physical activity, participation, community connectivity and fun.

The City of Melton has only one council-owned aquatics facility, the Melton Waves Leisure Centre, for a population of more than 205,000 people spread across more than 527 square kilometres.

Melton Waves is an aging facility, so an additional aquatic centre within the municipality is necessary for the liveability of our residents.

The City of Melton has the highest rate of need across all determinants of health. The PAWC will include a designated allied health wing of 2,000m² to address the significant gap in access to local allied health services such as occupational therapy, nutrition, psychology, psychiatry, exercise physiology, physiotherapy, sports medicine and NDIS services.

The PAWC will also feature Australia's first water sensory area – including water features, interactive wall elements and a heated pool with a beach-style entry for people of all ages and abilities.

It is projected that the facility will attract 687,156 visits in the first year.

Council has invested \$250,000 in the 2023/24 budget to finalise the master plan and commence schematic design and detailed design. We are ready to partner with the Australian and Victorian Governments to deliver the centre.



COBBLEBANK COMMUNITY SERVICES HUB

The Cobblebank Community Services Hub (the Hub) will provide space lacking in the City of Melton to accommodate a range of community and allied health services which meet the needs of our growing community and the broader region.

The hub will be based in the heart of the Cobblebank Metropolitan Activity Centre. It will be close to the Cobblebank Train Station and bus interchange, outdoor parks, Cobblebank Stadium, the future Melton Hospital and TAFE, along with a significant retail and entertainment precinct.

This purpose-built facility will fill critical community and allied health service gaps such as prevention of family violence, mental health, disability, employment, alcohol and drug support, refugee support and culturally specific services for our Aboriginal and Torres Strait Islander communities and culturally diverse communities.

Melton City Council has long recognised the need for localised delivery to increase accessibility to health and human services. Delivering the health and human services needed within the City for the next 20 years won't happen without careful planning, policy and facilitation in partnership with key stakeholders.



The Hub will deliver an innovative solution to the ongoing accommodation issues being experienced by service providers, thereby:

- Improving the capacity to respond to the needs of the community by locating services close to the greatest need
- Delivering a facility that will attract key services to the area
- Supporting improved health and wellbeing outcomes
- Providing significant opportunities for training and local employment both during and after construction.

The Victorian Government has committed \$4 Million through the Growing Suburbs Fund. We are seeking additional investments from the Australian and Victorian Governments to help deliver this facility.





EDUCATION: EVERYBODY REACHING THEIR FULL POTENTIAL

*"More schools. Way more schools.
Classes are packed to the rafters."*

**FEMALE 35 TO 44 YEARS
BROOKFIELD RESIDENT**



INVESTMENT ASKS

- ③ Support the challenge of delivering early years education
- ③ An incentive program to encourage skilled professionals to work in growth areas where demand for learning is the highest
- ③ Build the new schools our community needs and upgrade existing ones
- ③ A Tech School for our area
- ③ English language secondary school for our diverse community

It is no secret that a good education has the power to change a life. It shapes us not only as individuals, but is important for social and economic development.

As a rapidly growing community, securing quality, well located early years, primary and secondary education opportunities for our residents is paramount.

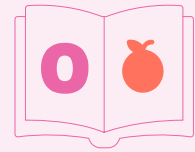
Melton City Council acknowledges the significant investment in education by the Victorian Government, and seeks assurances that this investment will continue in line with growth, so that all residents have every opportunity to reach their full potential.



Early childhood education has been shown to increase cognitive abilities and is linked to higher achievement at school.

KINDER STUDENTS

THREE-YEAR-OLD



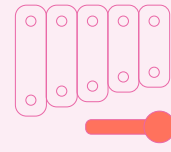
2,906

2021

4,451

2029

FOUR-YEAR-OLD



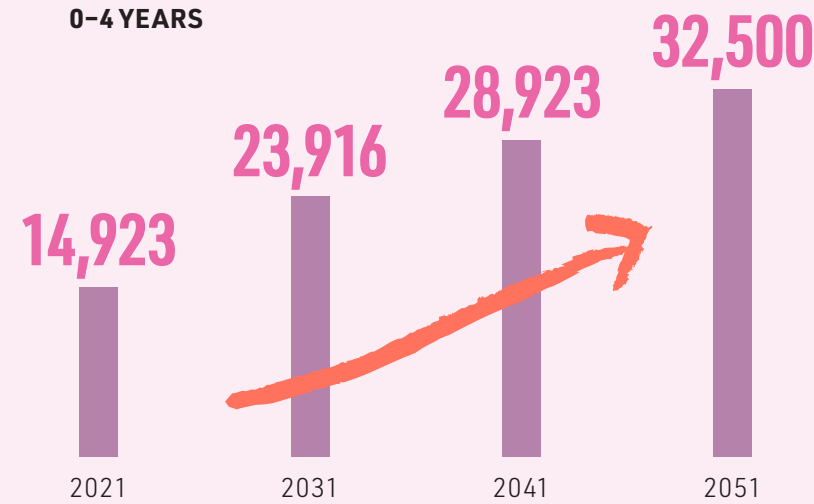
3,018

2021

4,522

2029

0-4 YEARS



EARLY CHILDHOOD GIVING CHILDREN THE BEST START IN LIFE

The City of Melton is Australia's fastest-growing municipality, and our rapidly expanding population will see the need for at least 1,370 kindergarten teachers and new facilities to support the 36,060 children who will be under 5 in 2051.

Melton City Council owns 25 kindergarten facilities, with six new centres built in the past five years. 4,292 children attended a Council owned facility in 2022.

Council is committed to working in partnership with the Victorian Government in the delivery of its Best Start, Best Life program, however we seek the commitment from government to:

- Increase Building Blocks funding to fully cover Council's costs for delivering additional kinder rooms required because of the Best Start, Best Life Reforms
- Also increase Building Blocks funding to fully cover provision of rooms for additional early learning programs including playgroups, vacation care, family day care and children's groups
- Extend the Building Blocks grants to beyond 2032, so that precincts soon to be planned can be planned with sufficient kinder infrastructure and land to support it
- Funding to expand our workforce capacity, and support service delivery
- The inclusion of early learning in the course delivery within the new Melton TAFE.

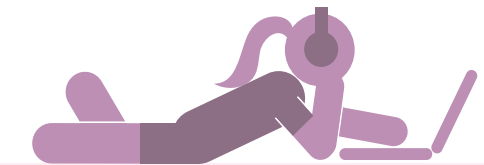
PRIMARY AND SECONDARY EDUCATION CHANGING LIVES

Many schools in the City of Melton exceed capacity and need upgrading. We welcome recent commitments to build new schools and upgrade existing schools, however we estimate that we will need eight new secondary schools to cater for 8,795 new secondary students expected by 2031.

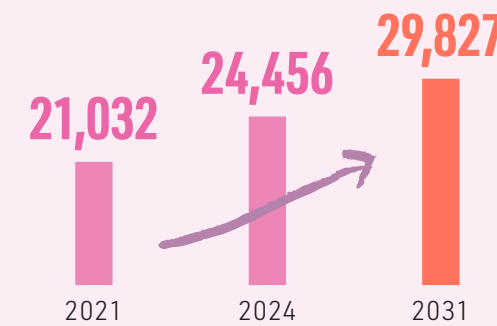
Planning for the delivery of additional schools is critical and we work closely with the Victorian Government to identify future school sites. We seek an increased investment to match the needs of our rapidly growing community.

We are also seeking the establishment of a Tech School in the City of Melton and a STEM-focused curriculum in our secondary schools.

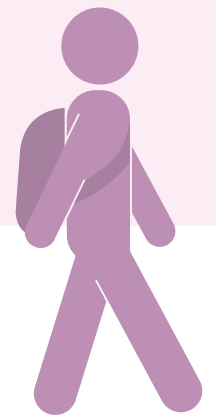
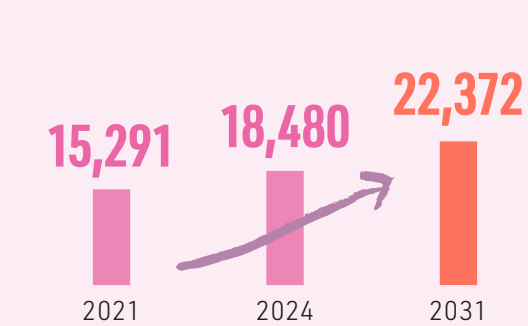
A Tech School and STEM focussed curriculum would give secondary students access to high-tech, hands-on programs, giving them the skills they need to navigate the future workplace.



PRIMARY STUDENTS



SECONDARY STUDENTS





ENGLISH LANGUAGE SCHOOL – HELPING NEW COMMUNITIES GET THE BEST START

A significant part of our population growth is from overseas migration or recent overseas arrivals moving in.

69,725 residents, or 39 per cent, speak a language other than English at home and 63,763 residents, or 35.7 per cent, were born overseas.

Access to intensive English language classes can make a significant difference. The Western English Language School (WELS) provides a specialised curriculum and has campuses co-located at mainstream schools in Maribyrnong, Brimbank, Hobsons Bay and Wyndham.

Students who attend mainstream school after studying at WELS have a higher rate of academic success and Victorian Certificate of Education completion.

In the City of Melton, schools have reported that a large percentage of students who were entitled to receive 6-12 months of intensive English language instruction through WELS did not enrol due to the long public transport round-trip journey.

In 2023, a new WELS prep – year 6 campus opened, and we now seek investment in a secondary school equivalent.



Students who attend mainstream school after studying at WELS have a higher rate of academic success and Victorian Certificate of Education completion.





SUSTAINABILITY: A GREEN, ZERO WASTE COMMUNITY

*"Greener city. More trees and parks
to negate heat in the local area."*

MALE 35 TO 44 YEARS
DIGGERS REST RESIDENT



INVESTMENT ASKS

- ➔ Fund a Circular Economy Hub
- ➔ Support Waste to Energy facility at Laverton
- ➔ Landfill Levy invested into new technology, behaviour change and education
- ➔ To work in partnership with the Victorian Government to maximise the impact of the new four bins program and container deposit scheme (CDS)
- ➔ Plant 100,000 trees over the next three years and increase our tree canopy cover to 30 per cent by 2050

Sustainability is at the core of everything we do. Council through its waste collection and diversion programs does much of the heavy lifting on reducing waste and promoting reuse.



A sustainable community addresses our environmental challenges, enhances the well-being of our residents and ensures a resilient and vibrant future.



WASTE

In 2022/2023, the City of Melton collected a total of 62,221 tonnes of kerbside waste - 35,386 tonnes of garbage and diverted 26,835 tonnes (14,115 tonnes recycling and 12,720 tonnes FOGO).

We are also home to Victoria's largest landfill, the Melbourne Regional Landfill at Ravenhall, which takes most of Melbourne's waste by digging and filling a hole the size of the MCG every 12 months.

Recycling Victoria has set a target of reducing waste by 80 per cent by 2030 with an interim target of 72 per cent by 2025.

We need to reduce the amount of waste going to landfill and do this quickly.

We need the Victorian Government to reinvest the increased landfill levy into new technologies and community education programs.

CIRCULAR ECONOMY HUB

Melton City Council supports the transition to a circular economy and the aspirations of becoming a zero-waste society. Melton Recycling Facility (MRF) is a significant local asset for recycling and diverting waste from landfill. We want to establish a Circular Economy Hub at MRF to nurture new circular economy industries such as e-waste processing or repair shops. Not only can this divert landfill, but these enterprises can build local skills, encourage social connections and create new business opportunities.

We seek funding from Australian and Victorian Governments to help establish the Circular Economy Hub at MRF.

WASTE TO ENERGY

Council welcomes the proposal for a purpose-built, waste to energy facility at Laverton that is capable of processing up to 240,000 tonnes of waste every year. The facility uses gasification technology which does not burn waste, but operates at extremely high temperatures in a low air environment and converts waste into a gas.



Council sees the new Circular Economy Regulations 2023 Act passing as enabling the proposal and we seek continued support from the Victorian Government to enable the timely construction of the facility.

ENERGY

We are committed to our role in a whole-of-community partnership to respond to climate change. Melton City Council has adopted a net-zero emissions target by 2040 for Council operations. Actions to achieve this target are identified in Council's Environment Plan 2017-2027. These include:

- Improving the energy efficiency of existing Council infrastructure
- Purchasing electrical vehicles and installing fast chargers at Council facilities
- Looking at ways to expand energy recapture and to phase out gas usage from council facilities, including the Melton Waves Aquatic Centre
- Installation of rooftop solar panels on council facilities.





GREENING MELTON

We recognise the health and wellbeing benefits of green open space and are committed to protecting and enhancing our beautiful natural environment. The City of Melton has the lowest tree canopy in metropolitan Melbourne at only 4.1 per cent compared with the average of 16.2 per cent. There is an urgent need to plant more trees to increase our tree canopy.

Trees serve as natural air purifiers, filtering out harmful pollutants from the air whilst releasing oxygen, creating a cleaner, fresher atmosphere. Research has shown that neighbourhoods with good tree cover experience lower rates of respiratory issues and allergies.

Tree canopy cover has been found to have the strongest impact in reducing heat in urban areas. Reducing heat in our neighbourhoods is critical, particularly for vulnerable groups such as children, people over 65 years of age and those with pre-existing medical conditions.



In Victoria, during the heatwave of 2019 there was a five-fold increase in health-related public hospital emergency department presentations, with heat killing more Australians than any other natural disaster.

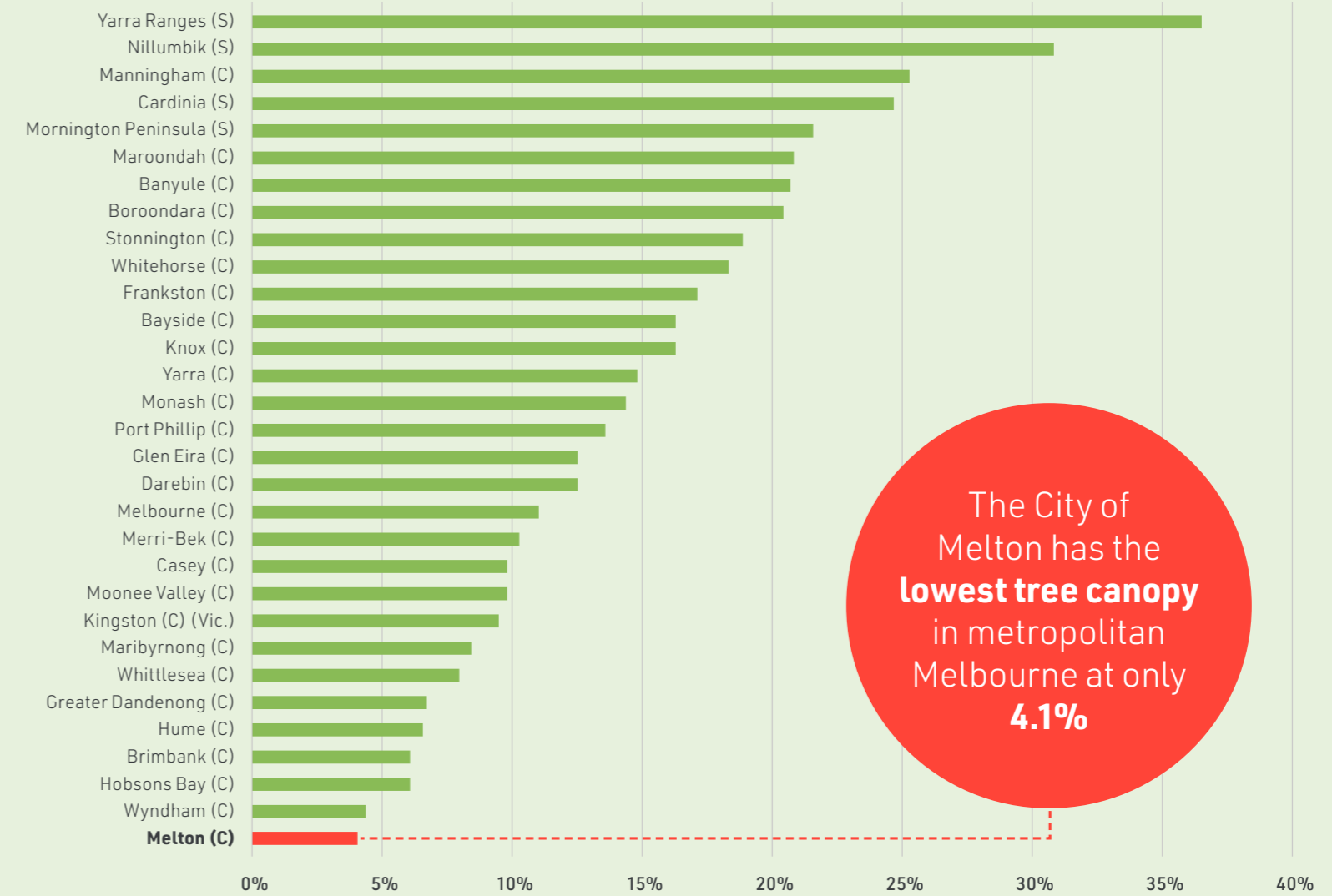
The Victorian Government has already invested in 'Greening the West' planting 35,000 trees locally in three phases and will plant another 11,000 trees in phase four announced in October 2023.

Our goal is to plant 100,000 trees over the next three years and increase our tree canopy cover to 30 per cent by 2050, as this is the recommended level for a healthy environment.



A good tree canopy reduces urban heat and encourages people to spend more time outdoors being active.

Percentage of tree cover by Local Government Area (2018)



The City of Melton has the **lowest tree canopy** in metropolitan Melbourne at only **4.1%**

Councillors ——— and Wards

CAMBRIDGE WARD



Cr Kathy Majdlik, Mayor

0412 584 058
kathy.majdlik@melton.vic.gov.au



Cr Steve Abboushi, Deputy Mayor

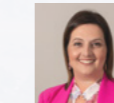
0437 231 680
steve.abboushi@melton.vic.gov.au



Cr Goran Kesic

0437 241 436
goran.kesic@melton.vic.gov.au

WATTS WARD



Cr Lara Carli

0409 951 020
lara.carli@melton.vic.gov.au



Cr Justine Farrugia

0475 907 616
justine.farrugia@melton.vic.gov.au

COBURN WARD



Cr Sophie Ramsey

0412 584 067
sophie.ramsey@melton.vic.gov.au



Cr Julie Shannon

0499 801 302
julie.shannon@melton.vic.gov.au



Cr Bob Turner

0412 584 224
bob.turner@melton.vic.gov.au



Cr Ashleigh Vandenberg

0499 801 183
ashleigh.vandenberg@melton.vic.gov.au

For more ——— information

Melton Civic Centre

232 High Street, Melton
T 03 9747 7200

Melton Library and Learning Hub

31 McKenzie Street, Melton
T 03 9747 7200

Caroline Springs Library and Learning Hub

193 Caroline Springs Boulevard
Caroline Springs
T 03 9747 7200

@ officeofceo@melton.vic.gov.au

☎ 03 9747 7200

🖱 melton.vic.gov.au

📘 facebook.com/cityofmelton

📷 Instagram.com/cityofmeltonofficial

PUBLISHED: MARCH 2024

