

SYNTHETIC TURF REPORT FOR THE CITY OF MELTON

# **SOCCKER FIELDS** **SPRINGSIDE & BROOKSIDE**

December 2018



[grassports.com.au](http://grassports.com.au)

**GrasSports**  
AUSTRALIA  
FUN ENVIRONMENTS FOR ACTIVE PEOPLE

Simon Potter  
City of Melton  
232 High Street  
Melton 3337

---

Dear Simon,

**RE: Condition Report of synthetic turf soccer fields**

Please find below a condition report summary and our recommendations for future action to keep the facility at its optimum performance.

This report is based on a recent site inspection from Ash Whitfield - Victorian Sales Manager, Darren Scanlan – General Manager and Lloyd Talbot - Maintenance manager

In summary, the report will detail a breakdown of the condition of the fields after carrying out the maintenance and an inspection of each field, the report will cover things like infill levels, wear and tear to the overall condition.

Please feel free to contact me regarding this report and the appropriate actions required to address the concerns listed below.

Yours sincerely,

Ash Whitfield  
Victorian Sales  
Manager  
Grassports Australia

**Facility name:** Springside Soccer Pitches x 2

**Client:** City of Melton

**Age:** 10 years

**Grass:** The northern pitch is Poligras MF 60, the southern pitch is Poligras NF 57. Grass was manufactured by APT

**Infill:** Sand & crumbed rubber

### Condition Report



The two synthetic turf pitches were installed in 2008 using synthetic turf manufactured by APT, since the installation maintenance has been completed on a regular basis, there was a time approx. 3-4 years ago that the maintenance ceased until it was picked up again a couple of years later.

The pitches have a large amount of use from the surrounding schools, General Public and Soccer clubs, we are assuming that the facility would receive in excess of 70 + hours of use a week and is maintained on a quarterly basis.

The field is showing signs of wear and tear mainly in the heavy use spots such as goal boxes, penalty spots and corner spots, these are regularly topped up with crumbed rubber on each maintenance visit however over 10 years they are starting to wear out, the penalty spots have been replaced with new turf 3 times in the last few years.

### Infill level:

The overall infill level of Pitch A is on the low side. This is due to the high level of use this pitch receives, even with the rubber topping up that we carried out over the years.

The overall infill level of pitch B is reasonable for use this pitch receive

### Soccer goal boxes and penalty spots:

The goal box at the both ends is in poor condition. We recommend completing a full replacement in the 6-yard box on both fields, as these will deteriorate very quickly due to the heavy use they receive.

### Seams:

SPRINGSIDE PITCH A: The seams on this pitch are in good condition, considering the age and high level of usage this pitch receives it is good to see.

SPRINGSIDE PITCH B: The seams on this pitch are in good condition, considering the age and high level of usage this pitch receives it is good to see.

### Fencing:

We recommend that Council has a fencing contractor inspect the entire fencing as there are a lot of holes, missing fixings and damaged top rails which are making the fence unsafe and aesthetically unpleasant.

### Recommendations:

- Increase Synthetic Turf maintenance from 4 times per year to monthly – this will ensure the field will last another 2 – 3 years approx.
- Replace the 6-yard boxes on both fields with new 40mm sand rubber filled synthetic turf to improve playability In the high wear areas
- Replace the penalty spots on each field x4 in total
- There would be approx. 2 years left of life in these fields if the above was adapted.

**Facility name:** Brookside Soccer/AFL pitch

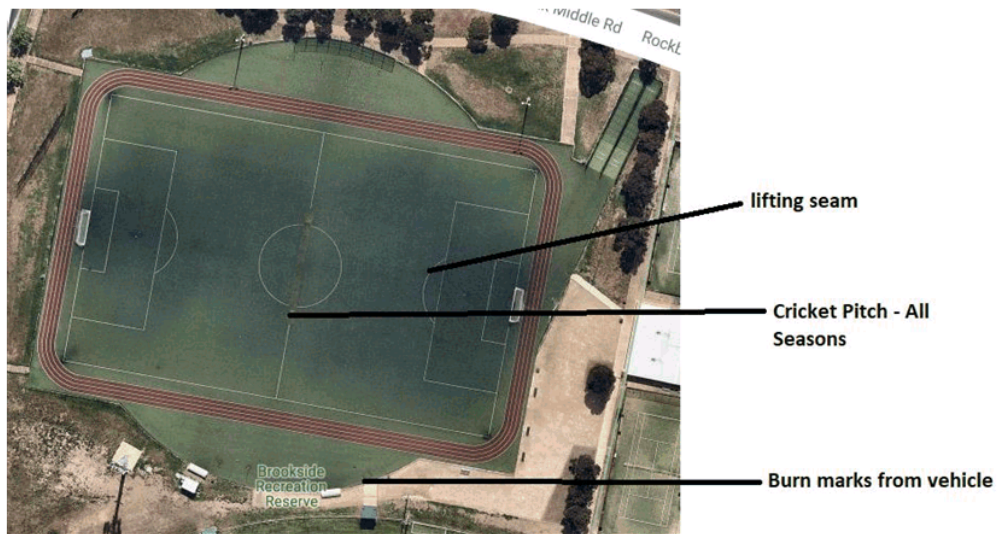
**Client:** City of Melton

**Age:** 9 years

**Grass:** Poligras NF 57, Ultimate Grass was manufactured by APT  
Cricket Pitch – All Seasons Pitch with rubber underlay

**Infill:** Sand & crumbed rubber

### Condition Report



The synthetic turf pitch at Brookside was installed in 2008 using synthetic turf manufactured by APT, since the installation maintenance has been completed on a regular basis, there was a time approx. 3-4 years ago that the maintenance ceased until it was picked up again a couple of years later.

The pitch has a large amount of use from the surrounding schools, General Public and Soccer clubs, we are assuming that the facility would receive in excess of 70 + hours of use a week and is maintained on a quarterly basis.

The field is showing signs of wear and tear mainly in the heavy use spots such as goal boxes, penalty spots and corner spots, these are regularly topped up with crumbed rubber on each maintenance visit however over 8 years they are starting to wear out, the penalty spots have been replaced with new turf 3 times in the last few years.

The centre cricket wicket is laid on a concrete slab with a rubber matting underneath the synthetic turf which is becoming an issue on the edges. The all seasons pitch was installed separately to the main field in 2010.

**Infill level:**

The overall infill level is on the low side. This is due to the high level of use this pitch receives, even with the rubber topping up that we carried out over the years.

**Soccer goal boxes and penalty spots:**

The goal box at the both ends is in poor condition. We recommend completing a full replacement in the 6-yard box on both fields, as these will deteriorate very quickly due to the heavy use they receive.

**Seams:**

The seams on this pitch are in good condition, considering the age and high level of usage this pitch receives it is good to see. – there is an issue on the eastern end goal box where the seam seems to be breaking away that needs addressing before it becomes worse.

**Fencing:**

We recommend that Council has a fencing contractor inspect the entire fencing as there are a lot of holes, missing fixings and damaged top rails which are making the fence unsafe and aesthetically unpleasant.

**Cricket wicket:**

BROOKSIDE: The cricket wicket is in poor condition and we have done several repairs to the edge of the grass, trying to help extend the life of the wicket as well as reduce the chances of them becoming a tripping hazard.

**Recommendations:**

- Increase Synthetic Turf maintenance from 4 times per year to monthly – this will ensure the field will last another 2 – 3 years approx.
- Replace the 6-yard boxes with new 40mm sand rubber filled synthetic turf to improve playability in the high wear areas
- Replace the penalty spots on each field x2 in total
- Replace the cricket pitch Cricket Victoria approved 9mm Supergrasse shield directly to the concrete slab.
- There would be approx. 2 years left of life in this fields if the above was adapted.

Grassports feel if the above was adopted then the fields at both Springside and Brookside would have another 2 – 3 years on them depending on the amount of use which is hard to calculate due to the external use by the public.

When it comes time for the fields to be resurfaced the following would need to be adopted.

- Removal of the existing synthetic turf surfaces by rolling up using a bobcat and disposing of into skip bins – there is approx. 70 6m3 bins required for each field.
- Inspection of the existing bases to determine if any remediation works are required.
- Supply and installation of the new synthetic turf system with the option of installing a 23mm Pro play shock pad.
- FIFA – Testing if required

#### **Budget Figures**

**Based on approx. 9,100m2**

Removal of the existing synthetic turf **\$172,900.00**

Supply and install Pro Play 23mm Shock Pad **\$217,490.00**

Supply and install Liga Turf 50 Synthetic Turf with sand/rubber infill **\$409,500.00**

FIFA Testing - **\$8,500.00**

**Note – this system must include the shock pad to be FIFA compliant**

**10% GST must be added to the above pricing**

There is the possibility of using a cheaper imported product however we always recommend using the Liga Turf systems as they are locally made in Melbourne and have the best UV stabilisation to cope with our climate.