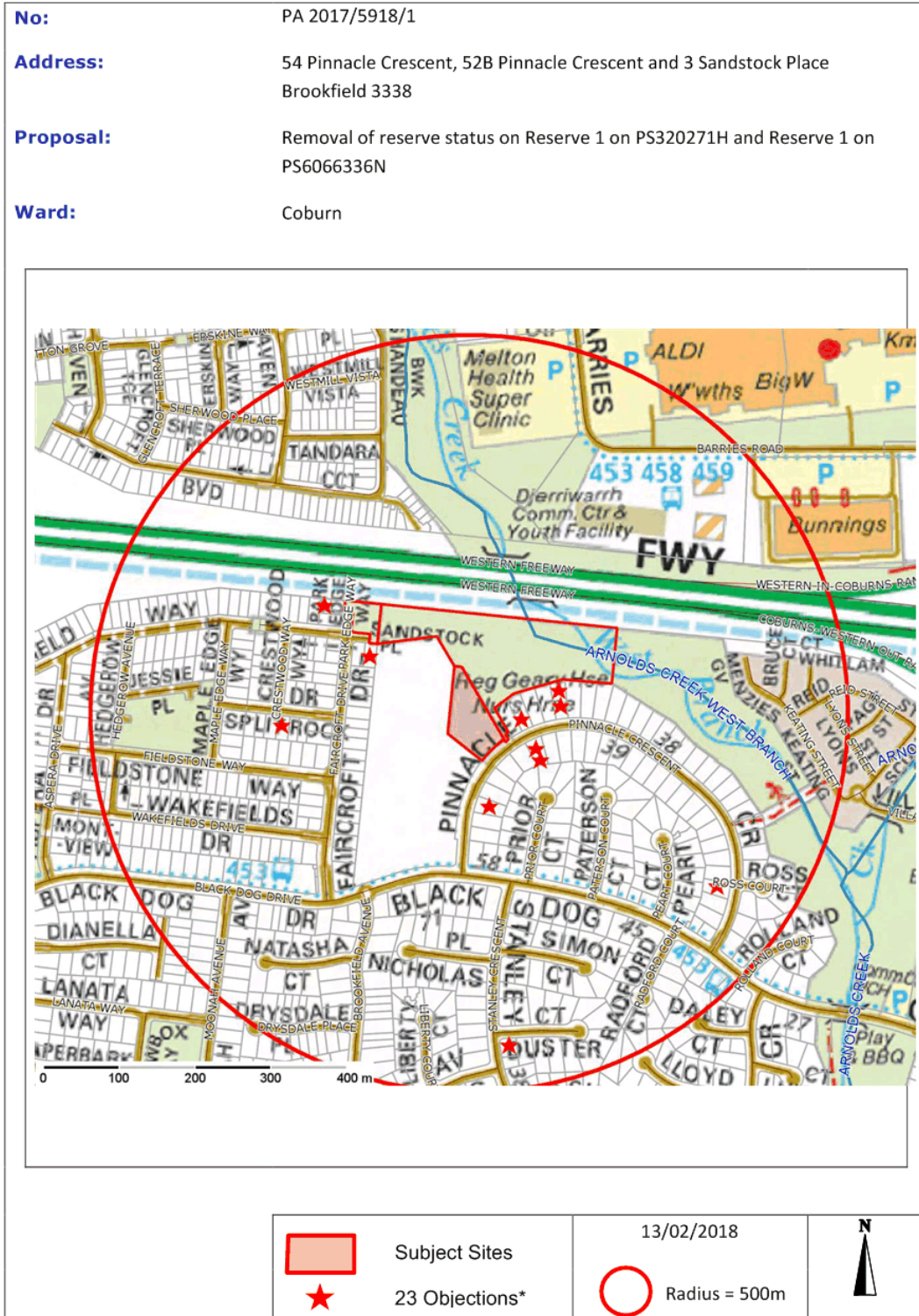


Item 12.14 Planning Application PA 2017/5918 - Removal of Reserve Status from a portion of the reserve adjoining properties off Pinnacle Crescent in Brookfield to facilitate its consolidation with a site At 54 Pinnacle Crescent

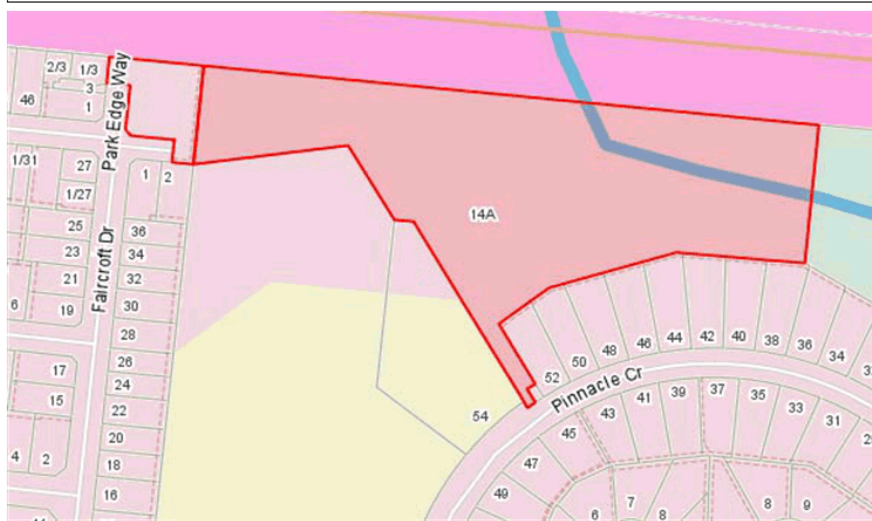
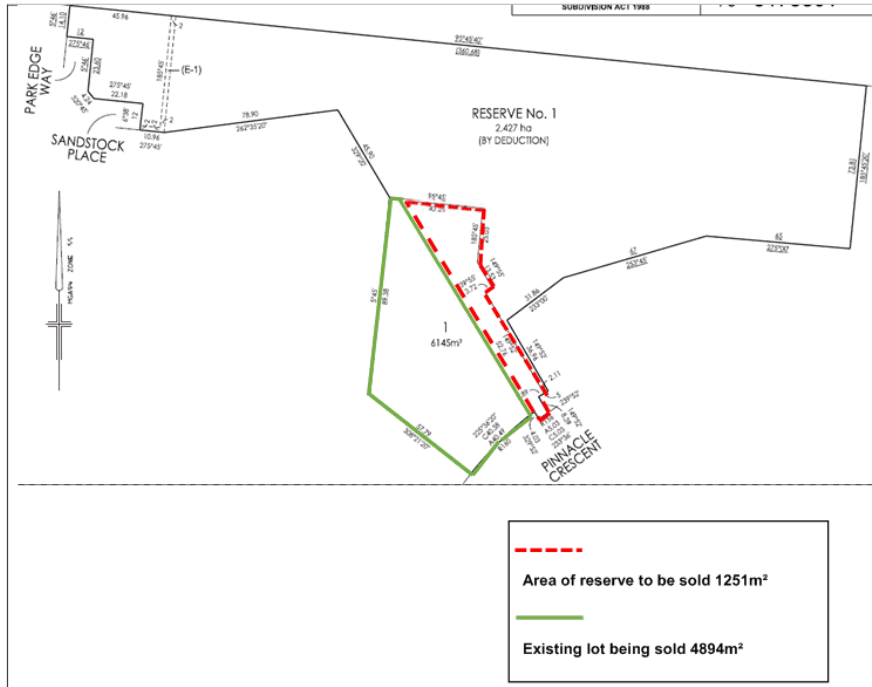
Appendix 1 Locality Plan - dated 13 February 2018



\*11 objections as shown and 12 objections outside of scope of mapping

Item 12.14 Planning Application PA 2017/5918 - Removal of Reserve Status from a portion of the reserve adjoining properties off Pinnacle Crescent in Brookfield to facilitate its consolidation with a site At 54 Pinnacle Crescent

Appendix 1 Locality Plan - dated 13 February 2018



— Total area of reserves 2.55 hectares