

Our Reference: Traffic & Transport

12 January 2018

Dear Sir/ Madam,

**Re: Parking Restrictions – Forrest Street and Wylie Circuit, Burnside Heights**

Melton City Council has received a request from a resident within your street to implement parking restrictions along Forrest Street and Wylie Circuit in Burnside Heights. It has been expressed that traffic from the nearby school(s) are parking in the street, causing difficulty for residents to enter and exit their properties.

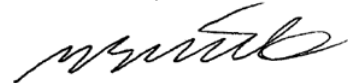
Provided there is support from the residents and at the discretion of Council, the proposed parking restriction will be no stopping signs during school times on the western and northern sides of Wylie Circuit, and the eastern side of Forrest Street (refer to attached plan). It should be noted that there will be no parking exemptions to residents and their visitors during this time.

In addition, please note that these parking restrictions will be enforced by Council's Local Laws officers and their resources are limited to patrol this street all day, every day.

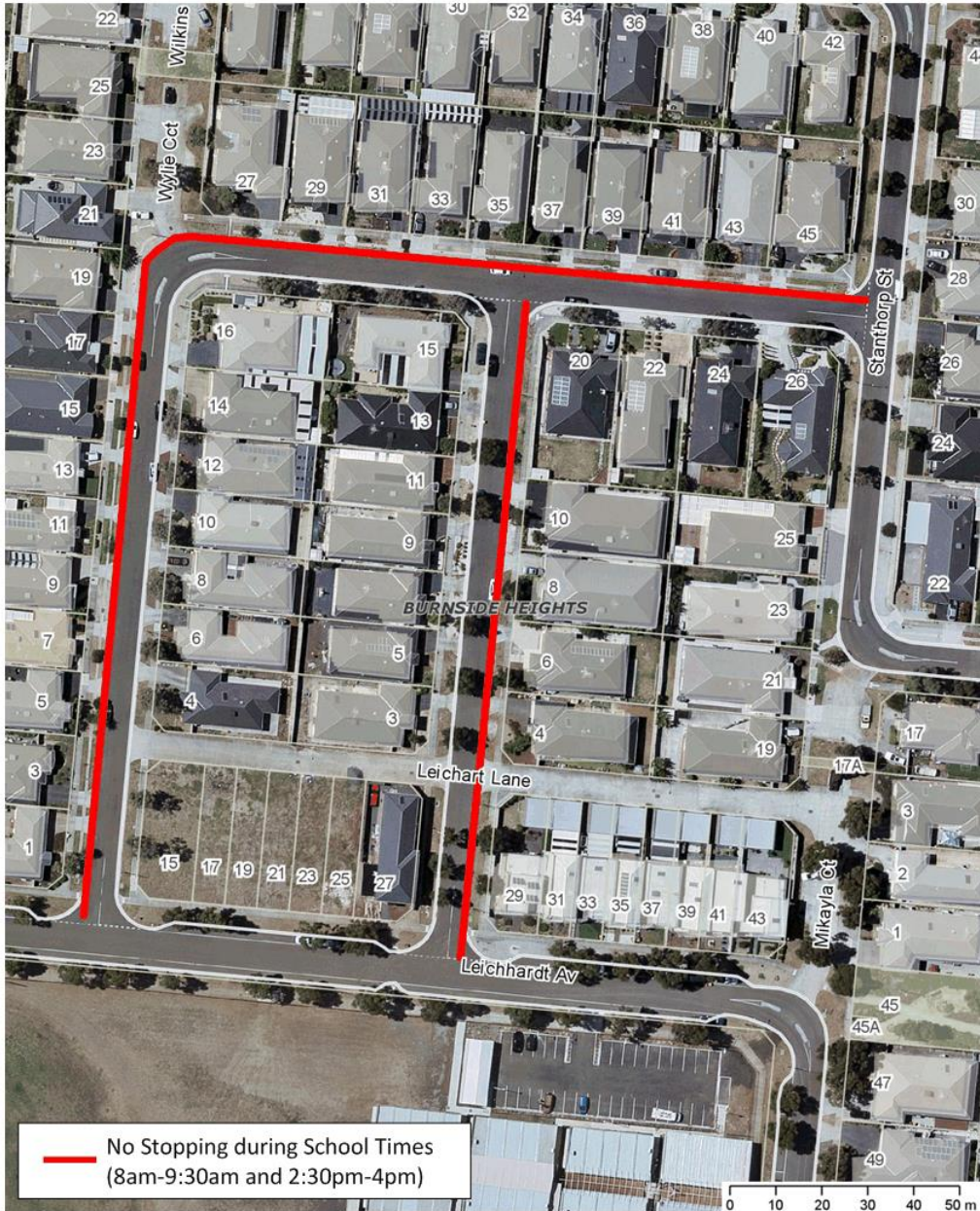
Council invites you to provide your feedback on the request with the supplied questionnaire and paid reply envelope, mailed to Council by Friday 26<sup>th</sup> of January 2018.



In the meantime if you wish to discuss the matter in further detail, please do not hesitate to contact me on 9747 7200.

Yours sincerely,



Michael Smith  
**TRAFFIC & TRANSPORT ENGINEER**



	<p>Melton City and the State of Victoria do not warrant the accuracy of information in this publication and any person using or relying upon such information does so on the basis that Melton City and the State of Victoria shall bear no responsibility or liability whatsoever for any errors, faults, defects or omissions in the information.</p>	12/01/2018	
		1:1250	