

Our community today

- 2 Our City is a diverse and vibrant community. From Eynesbury to Caroline Springs, Diggers Rest, to Melton, we are a city experiencing rapid growth that has sprung from our history as a small town known for equestrian and farming activities.

Overall, we are a young City; 43 babies are born each week and almost 40 per cent of us are under the age of 25. However, in the next 20 years, our ageing population will increase by 152 per cent. Nearly a third of us speak a language other than English. And, with another 11 suburbs set to be established, our City's population will at least double over the next 20 years from approximately 140,000 people today to an estimated 315,000 people in 2036.

From this growth springs opportunities and challenges. So, it's more important than ever that we – as a community – share our values, concerns and hopes.



A wonderful, beautiful city! More nature, less crime, less drag racers and more fashion.

Girl, 10 years old



The making of a shared vision for the future



In early 2016, Melton City Council invited the community to contribute to a shared vision for the future – a detailed picture of where we want the City to be in 2036.

Throughout the process, more than 2,000 people shared what they love about living in the City of Melton, what they don't like and what their hopes are for our City in 2036. People were diverse in age and gender with different cultural backgrounds and abilities. And they had different connections to the city; some people live here, some people work here and some people visit.

People filled in a short questionnaire, were involved in the online engagement forum, responded to the annual household survey, participated in face-to-face community workshops and provided input at community events.

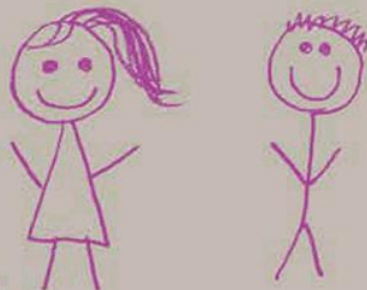
These shared ideas, thoughts, desires and wishes have shaped this vision for Melton City 2036. The community vision is written in the words of the people who shared their ideas.

4

The vision has people at the centre and describes the environments that we are all surrounded by and connected to – our social environment, our built environment, our economy and our natural environment.

What would you like the City of Melton to be when you grow up?

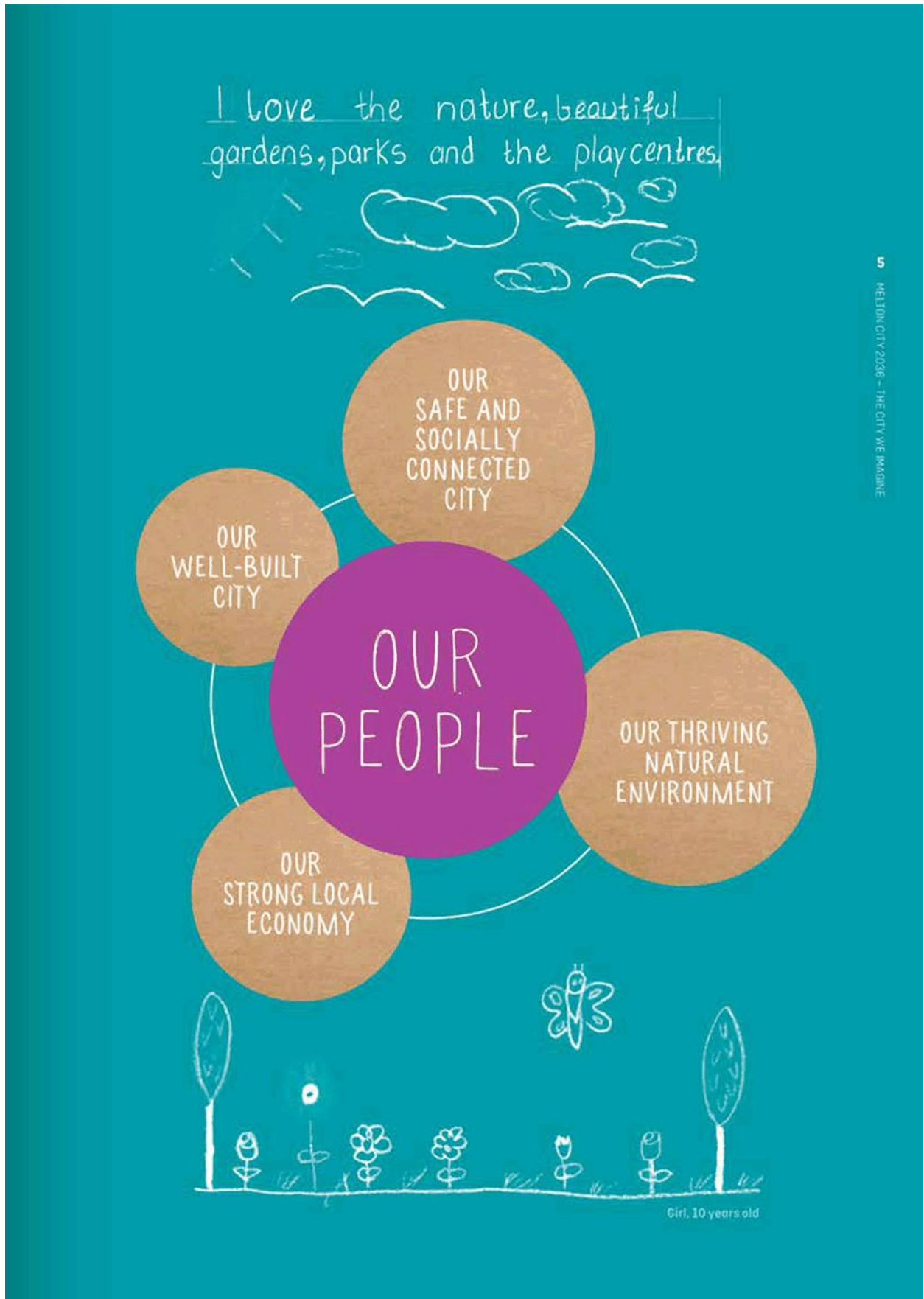
A beautiful, safe place, clean and happy.



Girl, 12 years old

"I HOPE IN 20 YEARS TIME MELTON WILL BE SOMEWHERE EVERYONE WILL BE PROUD TO LIVE IN."

Female, aged 0-14



Community says...

Melton City 2036 – The City We Imagine

- 6 Many of us believe that the City of Melton is a great place. We love our parks and green spaces, local shopping opportunities, libraries and leisure facilities and the 'sense of community'. We value the affordability and the country feel in an area that is a reasonable commuting distance to Melbourne.

We also think the challenges we face as a City include a lack of well-connected public transport, a local hospital and educational and employment opportunities. We are not happy with the traffic congestion, roads and littering, and we are very concerned about the growing feeling of being unsafe in our own community.

*A peaceful place with everyone
being friends.*



Girl, 10 years old



"OPEN SPACES WITH
LOTS OF LAKES AND
PARKS TO ENJOY."

Female, aged 50-69

Community says...



7
MELTON CITY 2036 - THE CITY WE IMAGINE

"I WANT EVERYONE TO FEEL ACCEPTED AND SAFE AND HAVE A SENSE OF BELONGING."

Female, aged 50-69

I would like melton to be a more steeling happy place and artistic.



Girl, 10 years old

"MORE PARKS AND WOODLAND WILL CREATE A MORE SUSTAINABLE COMMUNITY FOR THE FUTURE AND ENSURE THAT THERE IS 'ROOM TO BREATHE'."

Male, aged 41-60

In 2036, we hope that Melton City will be a proud community with a good reputation. It will be a peaceful and friendly place where everyone feels a sense of community and pride. We will have efficient transport options, easy access to community facilities, health services and schools. Our local economy will be strong with local tertiary education, jobs, thriving local businesses, industry and tourism. We will be active and use our outdoor spaces. We will enjoy our natural environment and protect it for future generations.

Community says...



8

Our safe and socially connected City

- Clean, welcoming and safe
- Accepting and inclusive
- Diverse, active and socially connected



While evolving and growing as a region, we will be a City that works together to be a safe place to live. We will retain our 'country feel' while we grow.

In 2036, we'll feel welcome and safe within our neighbourhoods and throughout our City. Homes and local streets will be well presented and clean, fostering a sense of safety and pride. We will know our neighbours and greet new friends as we pass them in the streets.

"CONNECTED AND CULTURALLY DIVERSE COMMUNITY WITH GREAT SOCIAL GATHERING PLACES."

Female, aged 25-49



"I WOULD LIKE TO SEE PLACES AND SPACES THAT WE CAN LIVE IN, SOCIALISE IN AND BE PROUD OF."

Female, aged 25-49

9 MELTON CITY 2036 - THE CITY WE IMAGINE

An acceptance of our differences will underpin our sense of community and belonging. We'll celebrate the various cultures that make up who we are as a City, contributing to our collective identity.

Strong relationships will exist between the community and Council. We will share our stories and work together. Local police will have a positive and reliable presence in our City and a strong connection with community members.

Clean and welcoming indoor and outdoor spaces across our City will encourage people to get together. Regular community-led events, festivals and activities will excite and include people of all ages, abilities and backgrounds.

Active lifestyles and participation in sport and other recreational activities will feature strongly in our community. We will have many opportunities to volunteer and be part of community groups.

Neighbourhoods, parks and playgrounds will be safe places for kids to meet and play. There will be lots of events, learning opportunities and fun activities for young people to enjoy and participate in.

Community says...

Our well-built City

- 10
- Well planned neighbourhoods with linking footpaths and bike lanes
 - Lots of parks and open spaces
 - Efficient public transport and free flowing traffic
 - Access to schools, a local hospital and health services

In 2036, each of us will have easy access to the places we need in order to work, learn and play.

Our neighbourhoods will be purposefully planned. Houses that take up less space on a block and green open spaces in local neighbourhoods will encourage people to spend time outdoors. Housing will be affordable, well within the reach of people who move to our City in search of a safe and friendly community.

It will be common to walk, bike or catch a bus rather than use a car when we move around in our local area. Shopping opportunities and services will be positioned close to homes, servicing growing neighbourhoods. Quality schools and tertiary education facilities within our City will generate new opportunities to create job-ready graduates.

*I love the war memorial
and the Peace in Melton.*

Girl, 9 years old



It will be easy to get around. Connected bike lanes, improved roads and efficient local bus services will connect us to other suburbs within our City, as well as to other areas and employment precincts in Melbourne's west. For longer journeys, we'll enjoy frequent, connecting and safe public transport options.

We'll enjoy spending time in accessible open spaces, such as parks and gardens. There will be many skate parks, playgrounds and outdoor sports grounds with well-maintained equipment, which will be popular meeting places for all members of our community. Indoors, we'll have a choice of community hubs, leisure and recreation centres, aquatic centres, entertainment and activity centres.

Within our City, we'll have access to a local general hospital and a range of quality health care services.

11 MELTON CITY 2036 - THE CITY WE IMAGINE



What would you like the City of Melton to be when you grow up?

The capital of Victoria with lots of things to do like rock climbing, bowling, go carting

Boy, 11 years old

"A CITY WHERE PEOPLE ARE HAPPY TO USE PUBLIC TRANSPORT."

Community workshop, November 2016

Community says...

Our strong local economy

- 12
- Opportunities for education, job training and lifelong learning
 - A mix of local employment
 - Fun and interesting places for residents and visitors
 - Unique local suburbs

Our economy is vital to the success of our City as a place where people can access quality education and find work.

In 2036, local business and shopping opportunities will be many and varied, from daily grocery needs to large shopping precincts with high-end products and services. Neighbourhood town centres will be thriving, with a great range of cafés and restaurants for food and entertainment.

We will focus on attracting and supporting a range of businesses and industries to set up in our City, in turn creating a strong job market. This will be assisted by our proximity to airports and ports. More local employment will result in fewer of us travelling long distances to work outside our municipality.



Local tertiary education and job training will be available to people of all ages and abilities, and linking our workers directly with employers. Our City will provide a range of career options, particularly for young people.

Our City will be a fun and interesting place to live, play and visit. Our commercial and nature-based tourism attractions will draw visitors from other regions, while local residents can enjoy them just a short distance from home.

A number of iconic arts and cultural events will highlight our City as a place for celebration and togetherness for residents and visitors. Each suburb will be unique and local events and activities will help attract tourism and support our economy.

"IT WILL BE ABLE TO EMPLOY MORE OF ITS OWN YOUNG PEOPLE IN MEANINGFUL POSITIONS."

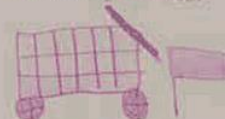
Female, aged 50-69

"TERTIARY EDUCATION IS PROVIDED WITHIN THE CITY OF MELTON - BOTH TAFE AND UNIVERSITY COURSES."

Male, aged 25-49



I like the shops and the gyms and the play centres.



Girl, 11 years old

Community says...

Our thriving natural environment

14

- Green city with native trees
- Natural spaces for wildlife and people
- Sustainable planning and design

*I want Melton to be
more aware of the environ-
ment.*



Natural green spaces will be flourishing and abundant throughout our City. Our population, housing and infrastructure growth will be balanced by the protection and maintenance of our grasslands, forests, woodlands, wetlands, waterways and wildlife.

Native trees will be planted in urban areas to provide shade, wildlife habitat and to beautify streets. Natural assets and environmentally sustainable design will be key considerations when planning and building new developments.

The importance of our existing natural spaces, native grasslands, plants and animals will be appreciated. Our natural spaces and waterways will be clean and sustainably used. We will enjoy outdoor activities such as bushwalking, cycling and water sports.

New parks and woodlands will be established and protected. These areas will serve as both a habitat for wildlife and as places where people can go to breathe and relax. A network of walking tracks and bike paths will encourage people to get out and explore these spaces.

As a community, we will protect our natural environment by reducing carbon emissions. Renewable energy sources will be used to power our homes, businesses and facilities. We will lead by example and work together to reduce waste and improve recycling processes.

How do we make this vision a reality?

Everyone who lives, works, studies, or visits the municipality has a role to play in helping achieve this vision.

Council will work together with the community, other levels of government, industry and not-for-profit organisations to drive the realisation of this vision, ensuring it is reflected on, actioned and monitored.

The vision will be incorporated into all aspects of Council's planning, decision making, advocacy, and service delivery. But, as our community changes, this vision will need to be reviewed on a four-yearly basis to make sure it reflects current attitudes.

15
MELTON CITY 2036 - THE CITY WE IMAGINE

'I THINK THAT COUNCIL, GOVERNMENT,
POLICE AND COMMUNITY NEED TO
BECOME A TEAM AND WORK TOGETHER'

Aged 25-49, gender not specified

'IT NEEDS COMMUNITY AND
COUNCIL TO WORK TOGETHER
TO DEVELOP MELTON AREA'

Male, aged 50-69

'A VISION TO STRIVE FOR AND EVERYONE
TO GET INVOLVED SO THEY FEEL INVESTED
IN THE OUTCOME'

Female, aged 25-49



Melton Civic Centre

232 High Street, Melton
T 9747 7200

Melton Library and Learning Hub

31 McKenzie Street, Melton
T 9747 7200

Caroline Springs Civic Centre and Library

193 Caroline Springs Boulevard
Caroline Springs
T 9747 7200

melton.vic.gov.au



More places to play
basketball and for it to
be legal to have a per
monkey.



Boy, 9 years old

